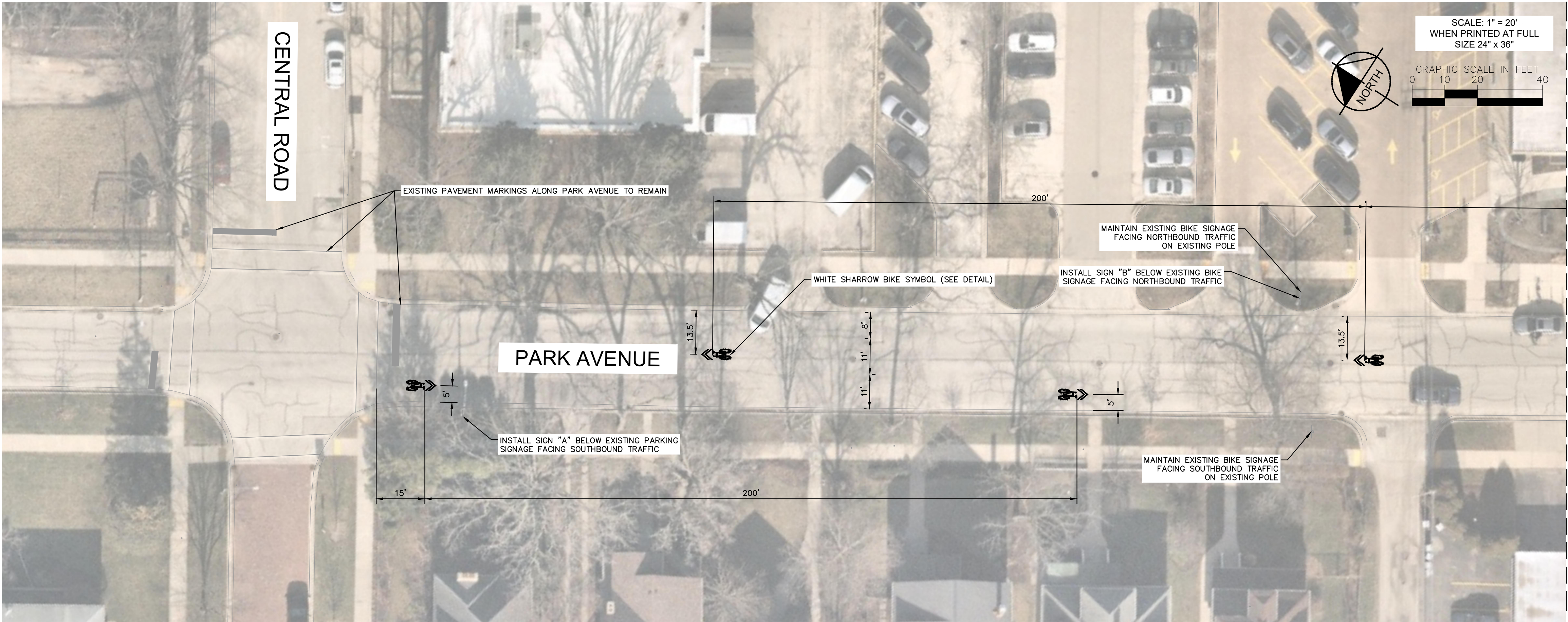


This document, together with the concepts and designs presented herein, is intended only for the specific purpose and client for which it was prepared. Reuse of and improper reliance on this document without written authorization and adaptation by Kimley-Horn and Associates, Inc. shall be without liability to Kimley-Horn and Associates, Inc.

MATCHLINE A - SEE ABOVE



MATCHLINE B - SEE SHEET 2



MATCHLINE A - SEE BELOW

No.	REVISIONS	DATE	BY

**Kimley»Horn**

© 2022 KIMLEY-HORN AND ASSOCIATES, INC.  
4201 WINFIELD ROAD, SUITE 600  
WARRENVILLE, IL 60555  
PHONE: 630-487-5550  
WWW.KIMLEY-HORN.COM

KHA PROJECT 168071017
DATE 11/01/2022
SCALE AS SHOWN
DESIGNED BY PL
DRAWN BY DB
CHECKED BY EA

MASTER BIKE AND ACTIVE  
TRANSPORTATION PLAN  
FEASIBILITY STUDY AND DESIGN WORK  
PREPARED FOR  
VILLAGE OF WILMETTE

ILLINOIS

P. LEMMON

PROFESSIONAL ENGINEER

PARK AVENUE STRIPING  
IMPROVEMENTS

SHEET NUMBER  
  
1



No.	REVISIONS	DATE	BY

KHA PROJECT 168071017	
DATE 11/01/2022	
SCALE AS SHOWN	
DESIGNED BY	PL
DRAWN BY	DB
CHECKED BY	EA

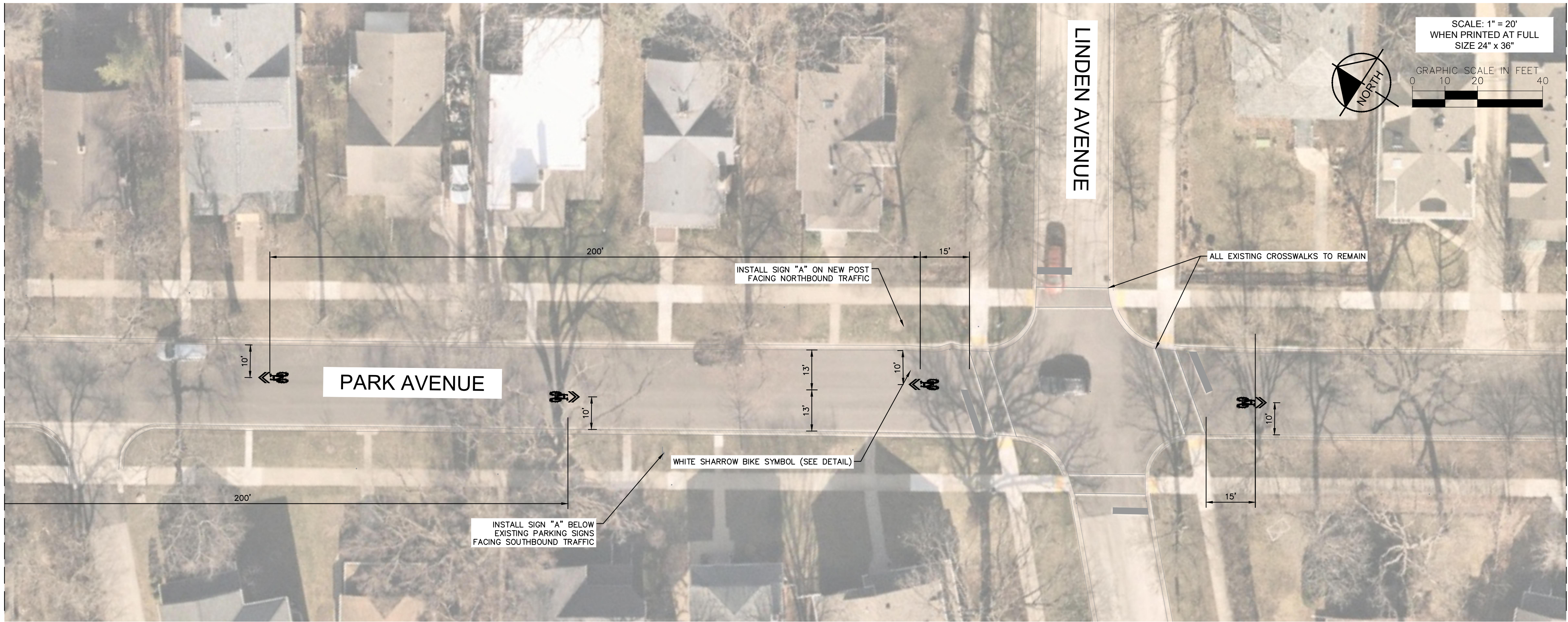
P. LEMMON

---

PROFESSIONAL ENGINEER

SHEET NUMBER

2



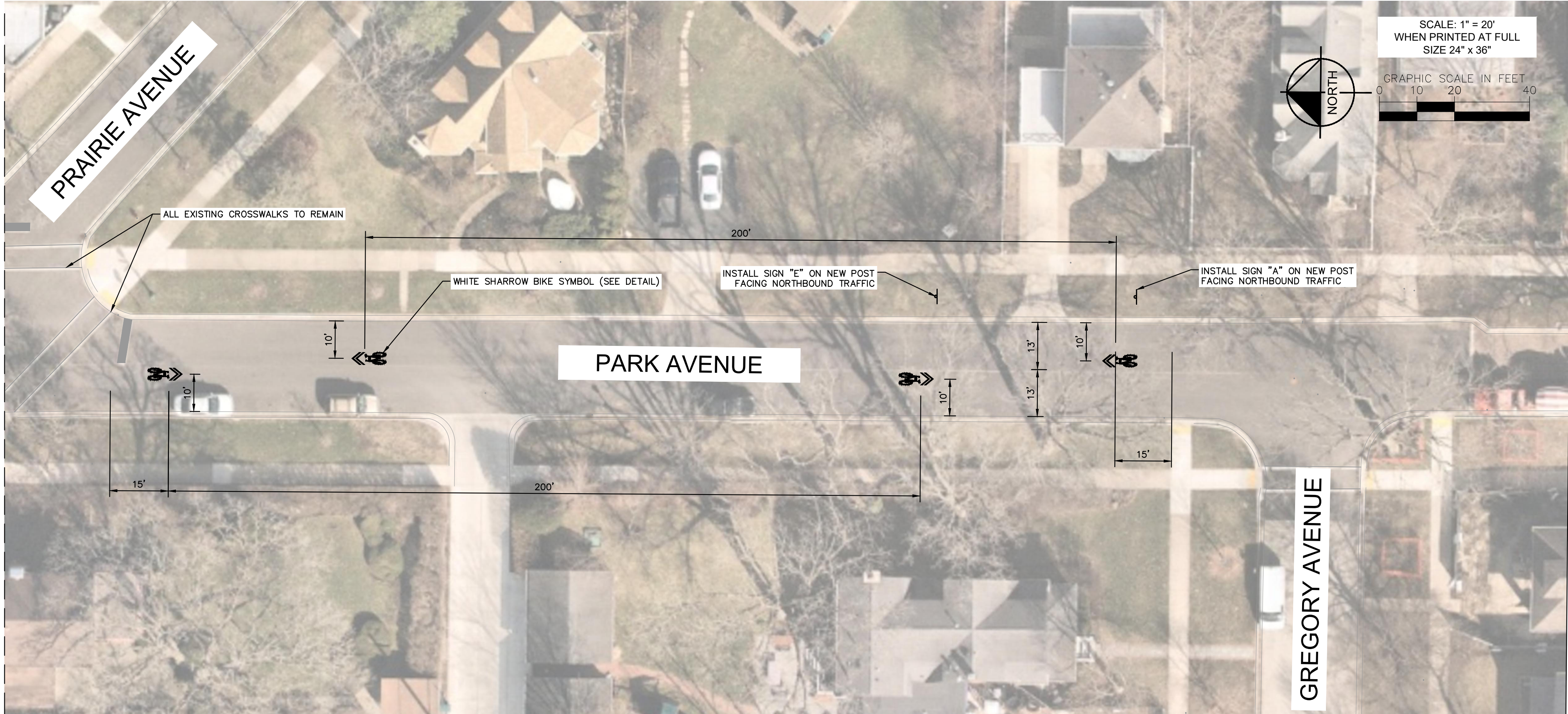
MATCHLINE C - SEE BELOW

MATCHLINE D - SEE SHEET 3

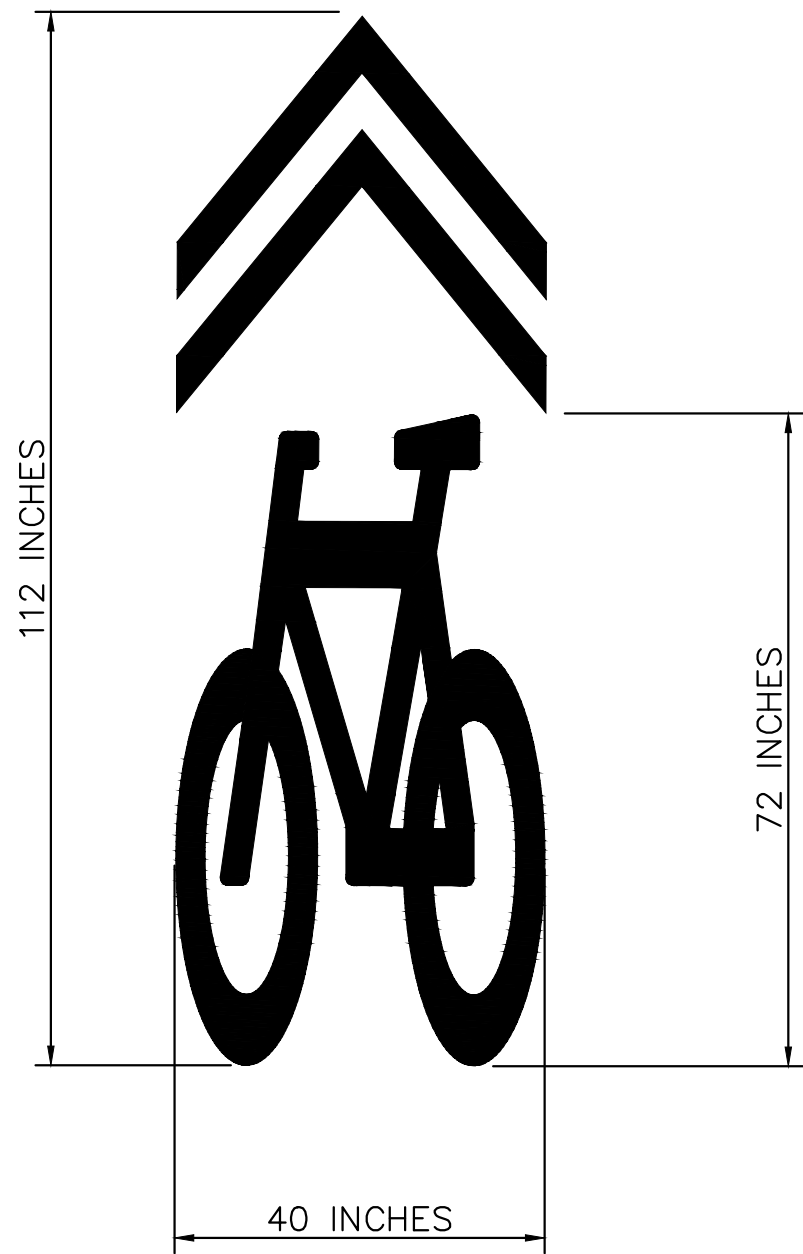


This document, together with the concepts and designs presented herein, is an instrument of service. It is intended only for the specific purpose and client for which it was prepared. Reuse of and improper reliance on this document without written authorization and adaptation by Kimley-Horn and Associates, Inc. shall be without liability to Kimley-Horn and Associates, Inc.

MATCHLINE D - SEE SHEET 2



DETAIL



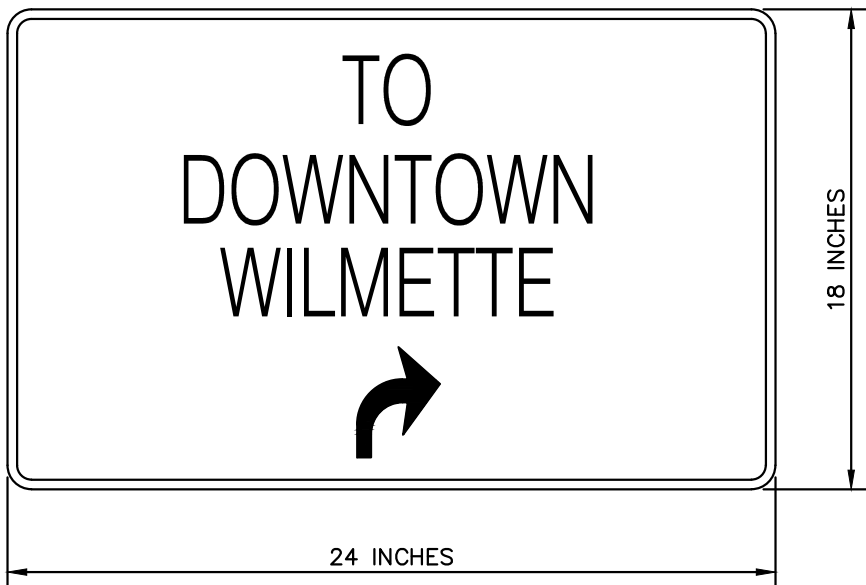
SHARED LANE MARKING  
PER MUTCD FIGURE 9C-9

SIGN A



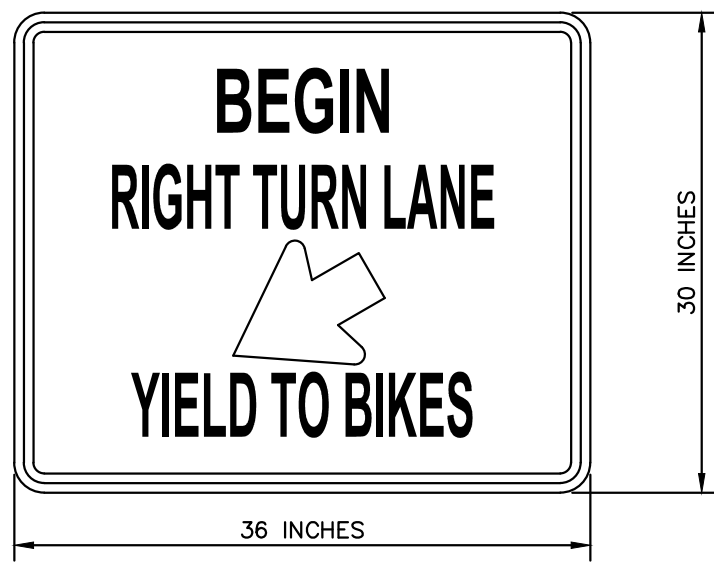
BICYCLES MAY USE  
FULL LANE  
(R4-11)

SIGN B



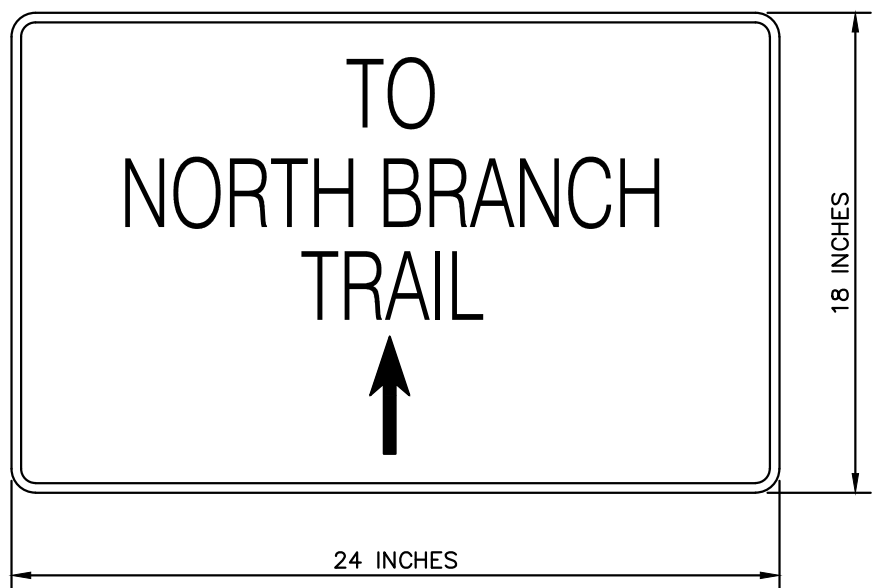
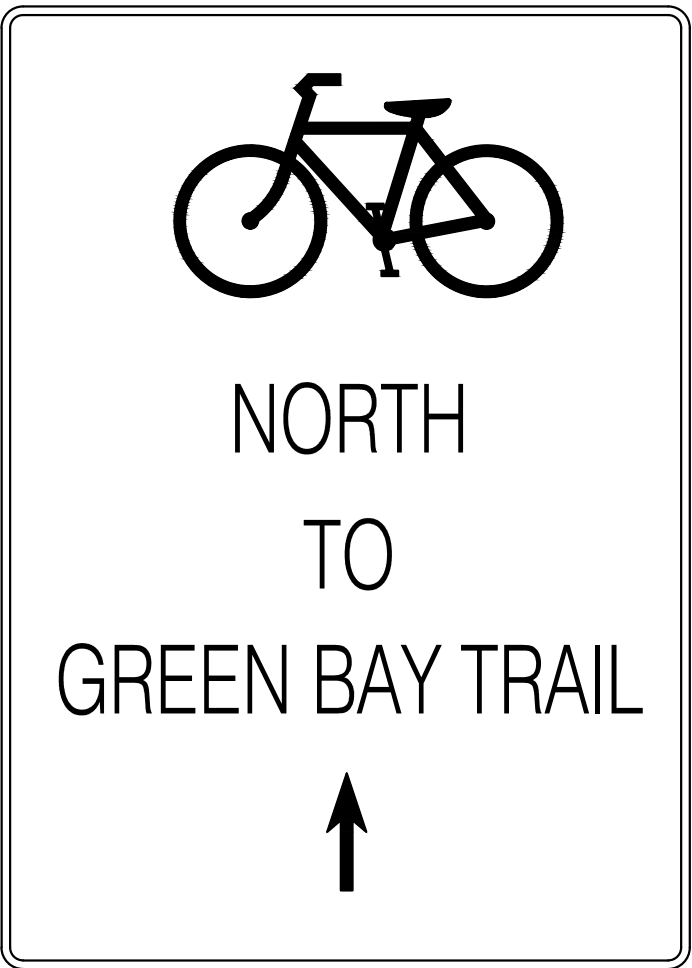
GREEN LEGEND  
WITH WHITE TEXT

SIGN C



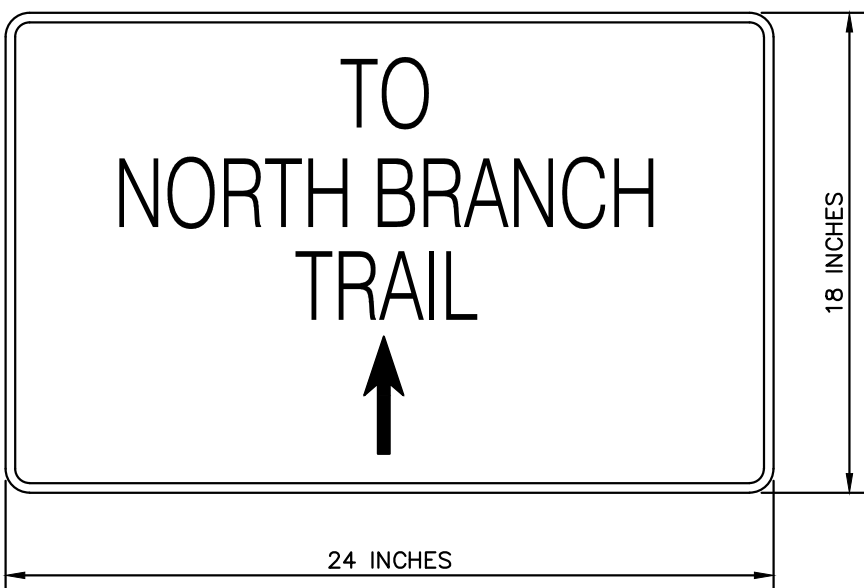
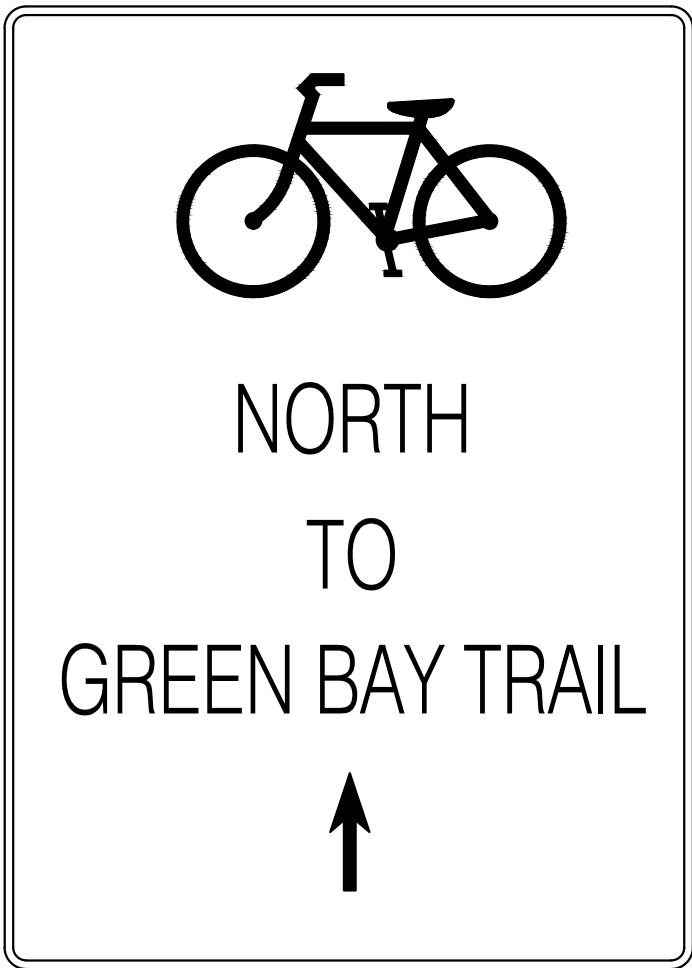
BEGIN RIGHT TURN LANE  
YIELD TO BIKES  
(R4-4)

SIGN D



GREEN LEGEND  
WITH WHITE TEXT

SIGN E



GREEN LEGEND  
WITH WHITE TEXT

SIGNS/DETAILS NOT TO  
SCALE

No.	REVISIONS	DATE	BY

**Kimley»Horn**

© 2022 KIMLEY-HORN AND ASSOCIATES, INC.  
4201 WINFIELD ROAD, SUITE 600  
WARRENVILLE, IL 60555  
PHONE: 630-487-5550  
WWW.KIMLEY-HORN.COM

KHA PROJECT	168071017
DATE	11/01/2022
SCALE	AS SHOWN
DESIGNED BY	PL
DRAWN BY	DB
CHECKED BY	EA

**MASTER BIKE AND ACTIVE  
TRANSPORTATION PLAN**

FEASIBILITY STUDY AND DESIGN WORK  
PREPARED FOR  
VILLAGE OF WILMETTE

ILLINOIS

COOK COUNTY

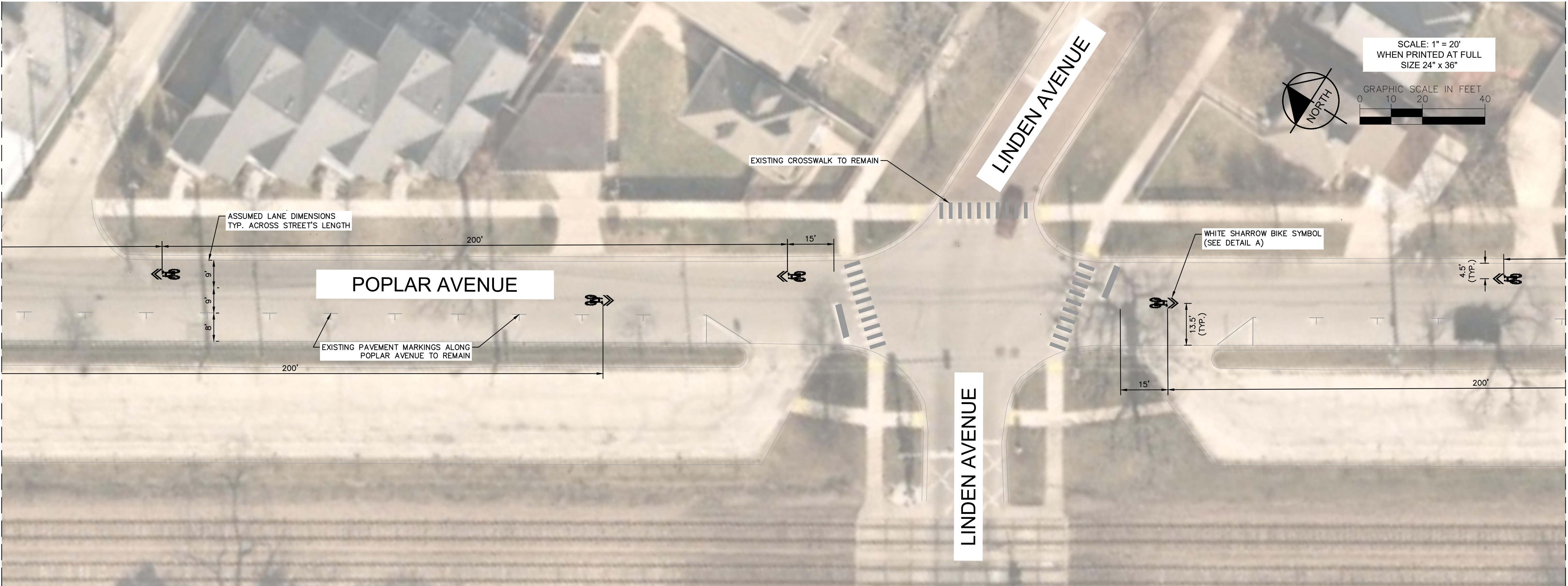
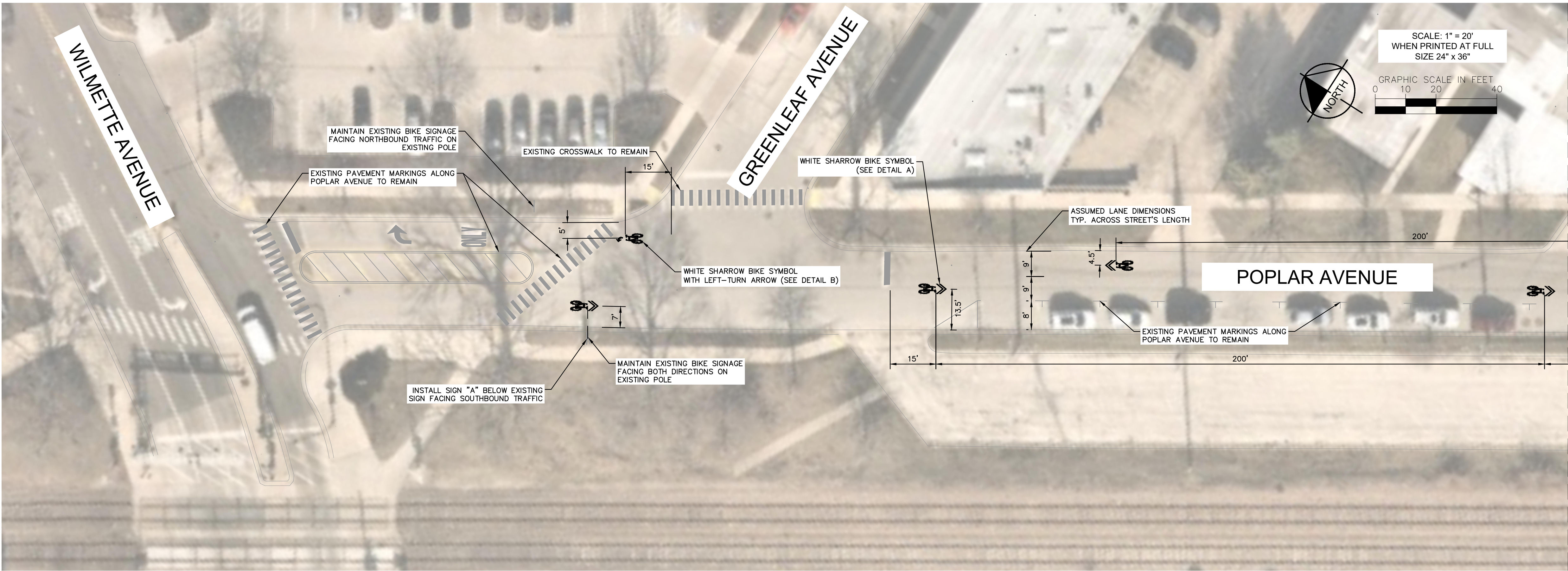
P. LEMMON  
  
PROFESSIONAL ENGINEER

PARK AVENUE STRIPING  
IMPROVEMENTS

SHEET NUMBER  
  
3



This document, together with the concepts and designs presented herein, is an instrument of service. It is intended only for the specific purpose and client for which it was prepared. Reuse of and improper reliance on this document without written authorization and adaptation by Kimley-Horn and Associates, Inc. shall be without liability to Kimley-Horn and Associates, Inc.



No.	REVISIONS	DATE	BY

**Kimley»Horn**  
© 2022 KIMLEY-HORN AND ASSOCIATES, INC.  
4201 WINFIELD ROAD, SUITE 600  
WARRENVILLE, IL 60555  
PHONE: 630-487-5550  
WWW.KIMLEY-HORN.COM

KHA PROJECT  
168071017

DATE  
11/01/2022

SCALE AS SHOWN

DESIGNED BY PL

DRAWN BY DB

CHECKED BY EA

**MASTER BIKE AND ACTIVE  
TRANSPORTATION PLAN**  
FEASIBILITY STUDY AND DESIGN WORK  
PREPARED FOR  
**VILLAGE OF WILMETTE**

COOK COUNTY

ILLINOIS

P. LEMMON

PROFESSIONAL ENGINEER

**POPLAR AVENUE STRIPING  
IMPROVEMENTS**

SHEET NUMBER

1



This document, together with the concepts and designs presented herein, is an instrument of service. It is intended only for the specific purpose and client for which it was prepared. Reuse of and improper reliance on this document without written authorization and adaptation by Kimley-Horn and Associates, Inc. shall be without liability to Kimley-Horn and Associates, Inc.

No.	REVISIONS	DATE	BY



© 2022 KIMLEY-HORN AND ASSOCIATES, INC.  
4201 WINFIELD ROAD, SUITE 600  
WARRENVILLE, IL 60555  
PHONE: 630-487-5550  
WWW.KIMLEY-HORN.COM

KHA PROJECT	168071017
DATE	11/01/2022
SCALE	AS SHOWN
DESIGNED BY	PL
DRAWN BY	DB
CHECKED BY	EA

MASTER BIKE AND ACTIVE  
TRANSPORTATION PLAN

FEASIBILITY STUDY AND DESIGN WORK

PREPARED FOR

VILLAGE OF WILMETTE

COOK COUNTY

ILLINOIS

P. LEMMON

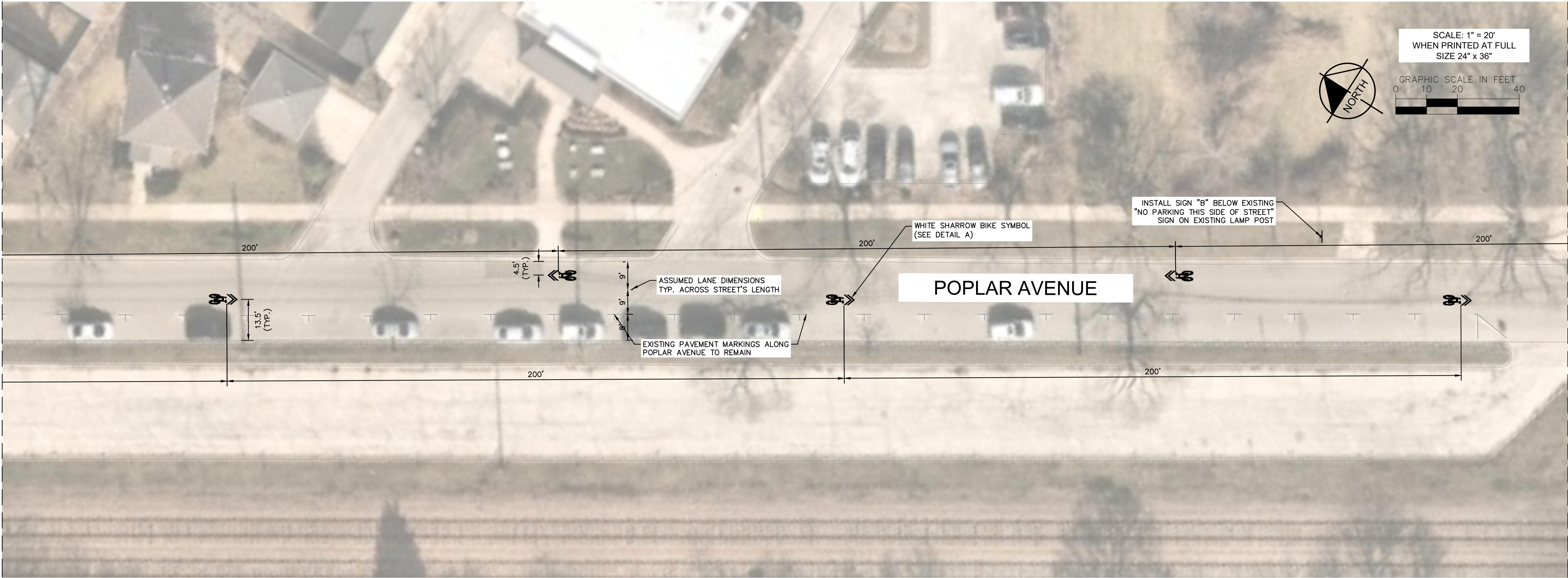
PROFESSIONAL ENGINEER

POPLAR AVENUE STRIPING  
IMPROVEMENTS

SHEET NUMBER

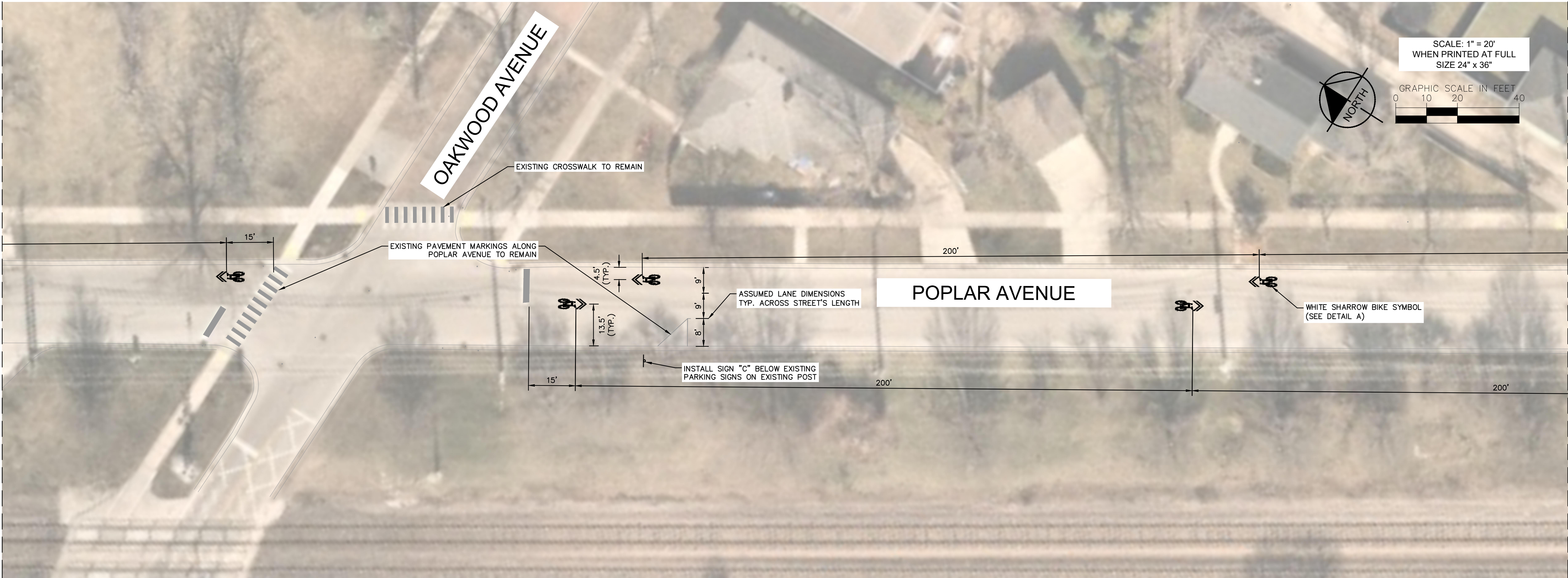
2

MATCHLINE B - SEE SHEET 1



MATCHLINE C - SEE BELOW

MATCHLINE C - SEE ABOVE



MATCHLINE D - SEE SHEET 3



This document, together with the concepts and designs presented herein, is an instrument of service. It is intended only for the specific purpose and client for which it was prepared. Reuse of and improper reliance on this document without written authorization and adaptation by Kimley-Horn and Associates, Inc. shall be without liability to Kimley-Horn and Associates, Inc.

No.	REVISIONS	DATE	BY	

Kimley»Horn

© 2022 KIMLEY-HORN AND ASSOCIATES, INC.  
4201 WINFIELD ROAD, SUITE 600  
WARRENVILLE, IL 60555  
PHONE: 630-487-5550  
WWW.KIMLEY-HORN.COM

KHA PROJECT 168071017
DATE 11/01/2022
SCALE AS SHOWN
DESIGNED BY PL
DRAWN BY DB
CHECKED BY EA

MASTER BIKE AND ACTIVE  
TRANSPORTATION PLAN  
FEASIBILITY STUDY AND DESIGN WORK  
PREPARED FOR  
VILLAGE OF WILMETTE

COOK COUNTYILLINOIS

P. LEMMON

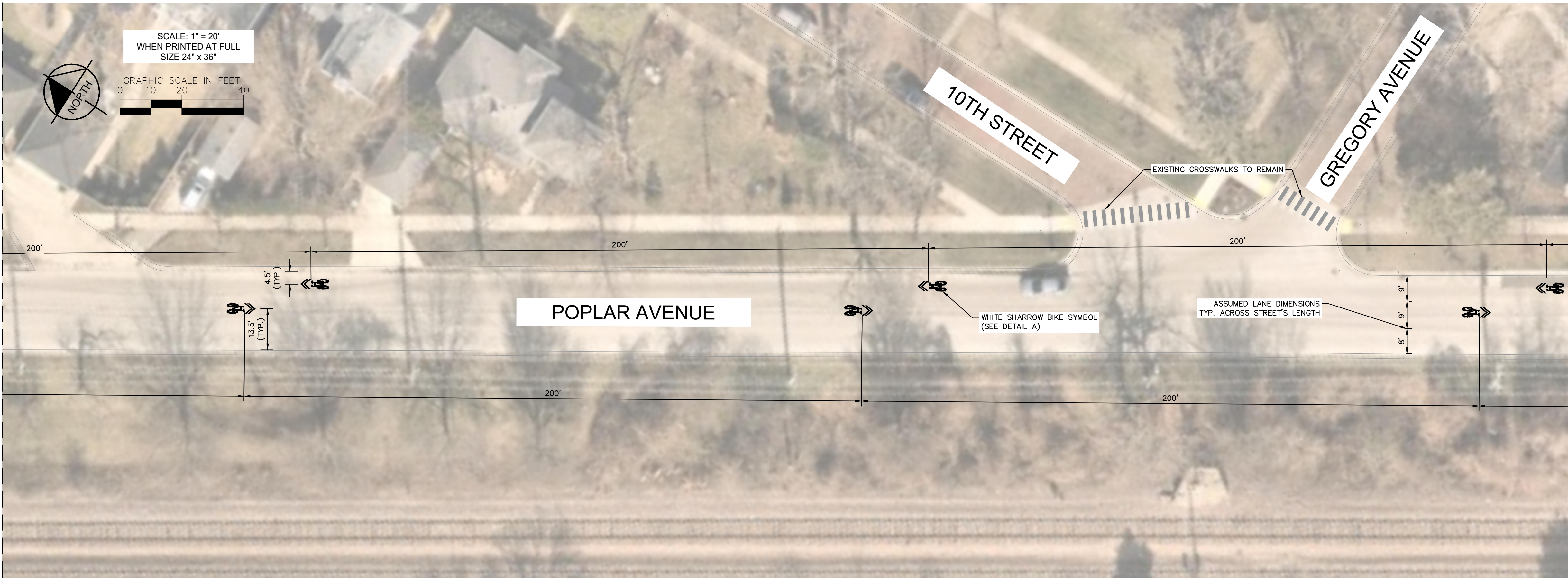
PROFESSIONAL ENGINEER

POPLAR AVENUE STRIPING  
IMPROVEMENTS

SHEET NUMBER

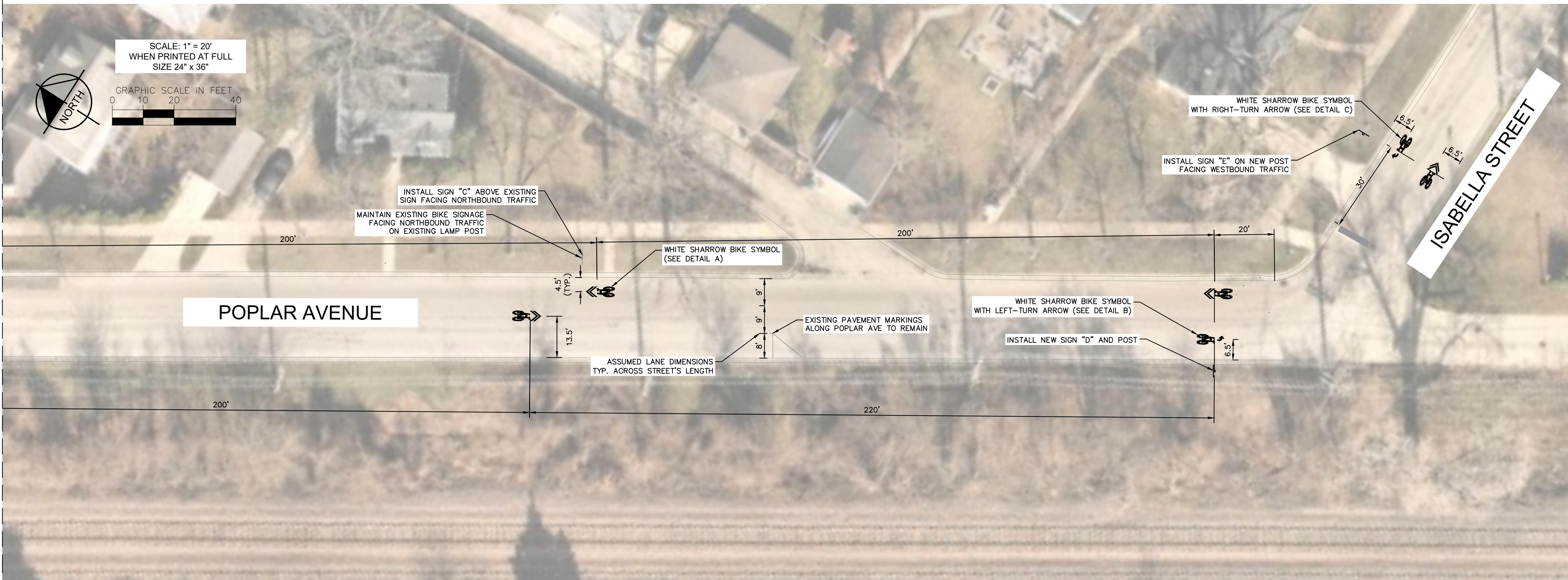
3

MATCHLINE D - SEE SHEET 2



MATCHLINE E - SEE BELOW

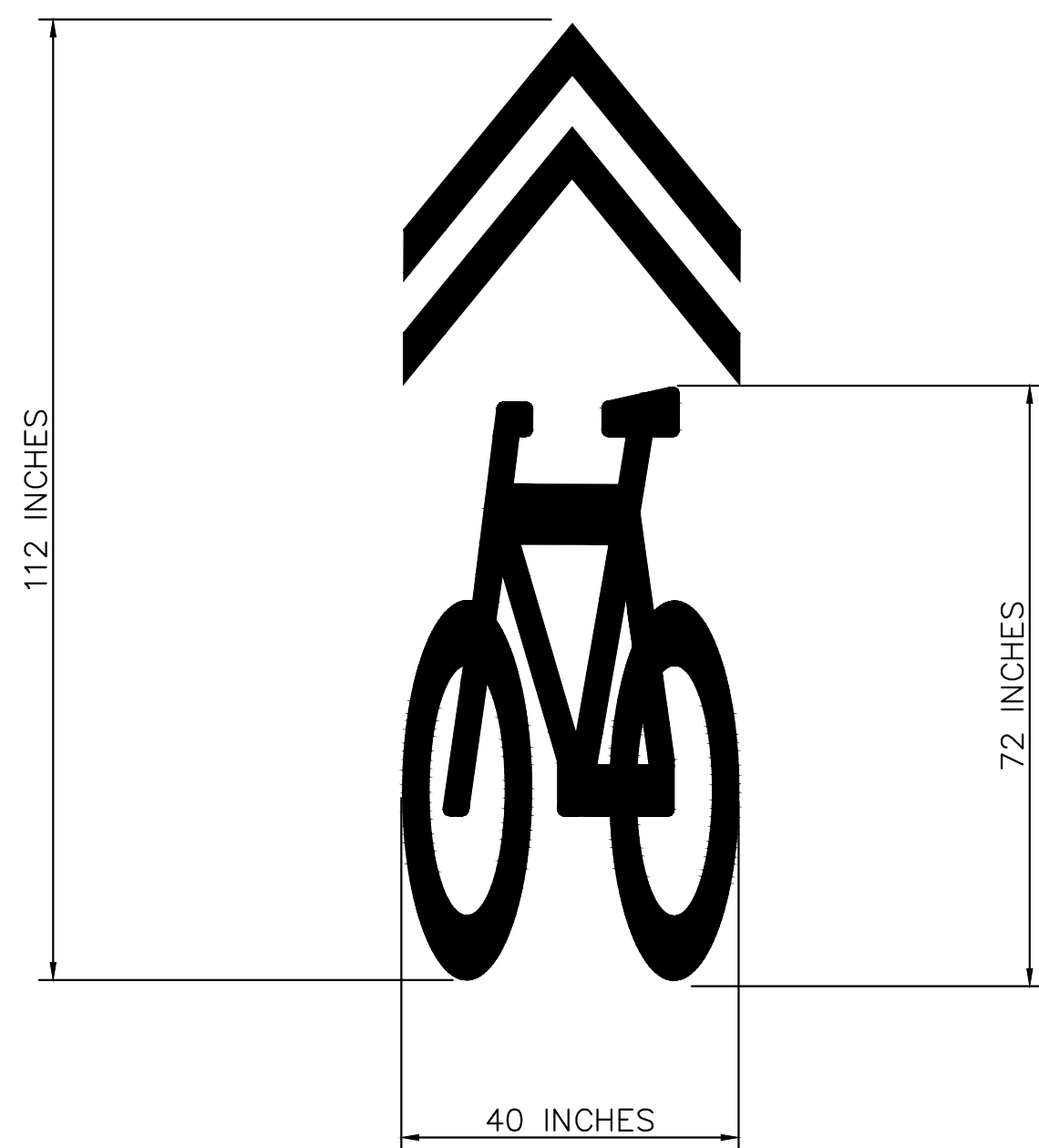
MATCHLINE E - SEE ABOVE





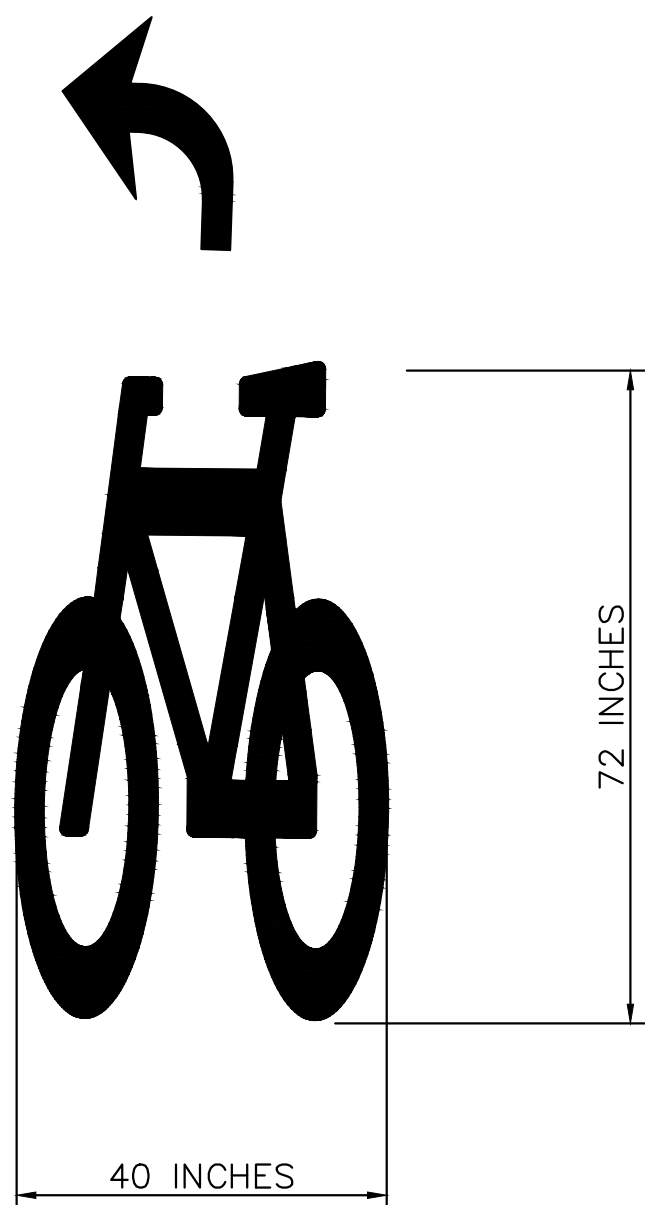
This document, together with the concepts and designs presented herein, is intended only for the specific purpose and client for which it was prepared. Reuse of and improper reliance on this document without written authorization and adaptation by Kimley-Horn and Associates, Inc. shall be without liability to Kimley-Horn and Associates, Inc.

DETAIL A



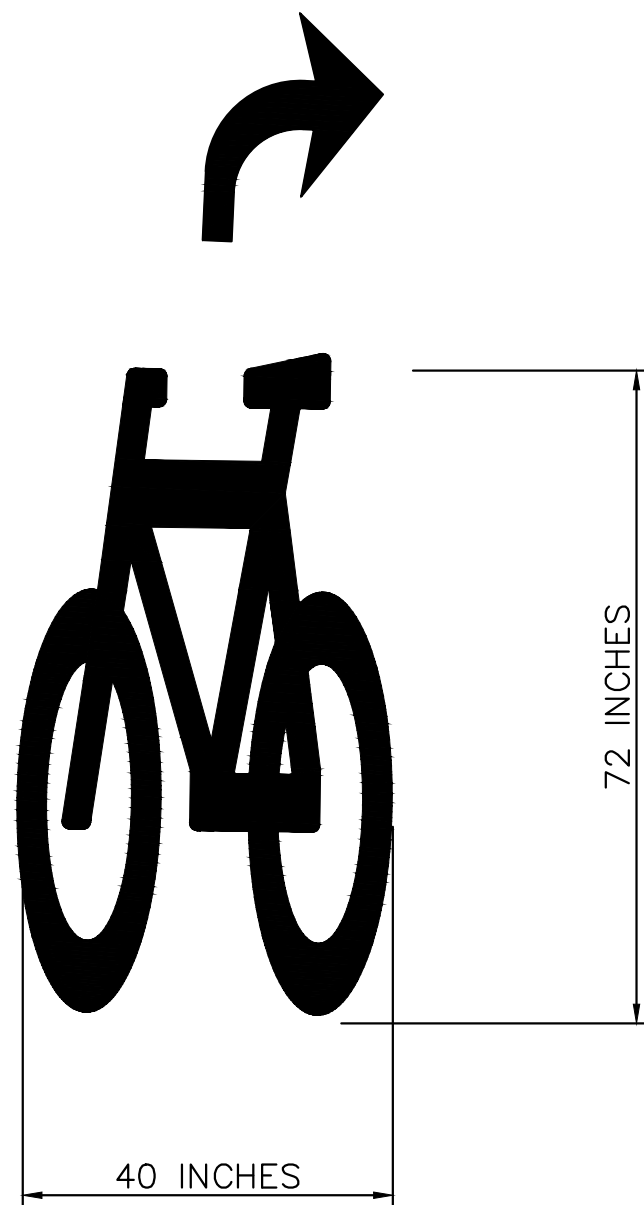
SHARED LANE MARKING  
PER MUTCD FIGURE 9C-9

DETAIL B



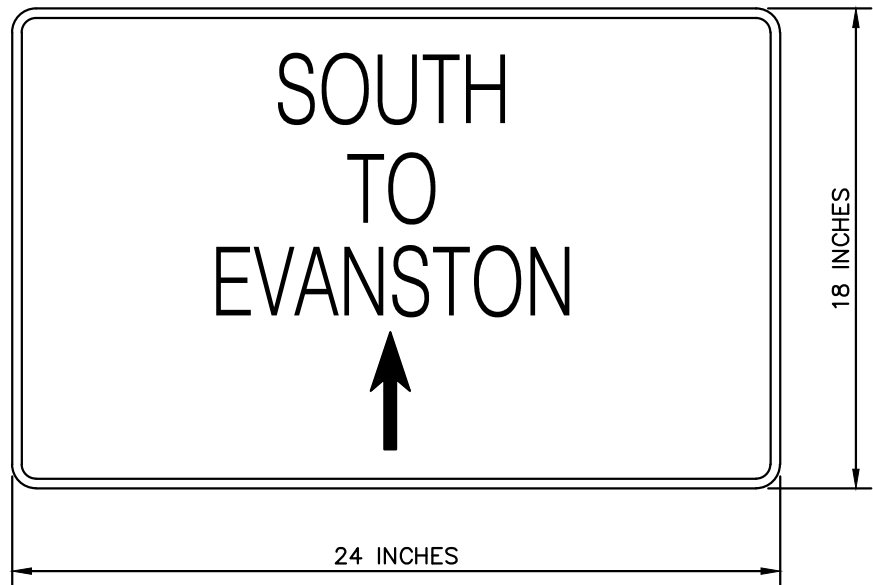
SHARED LANE MARKING  
PER MUTCD FIGURE 9C-9  
WITH LEFT-TURN ARROW

DETAIL C

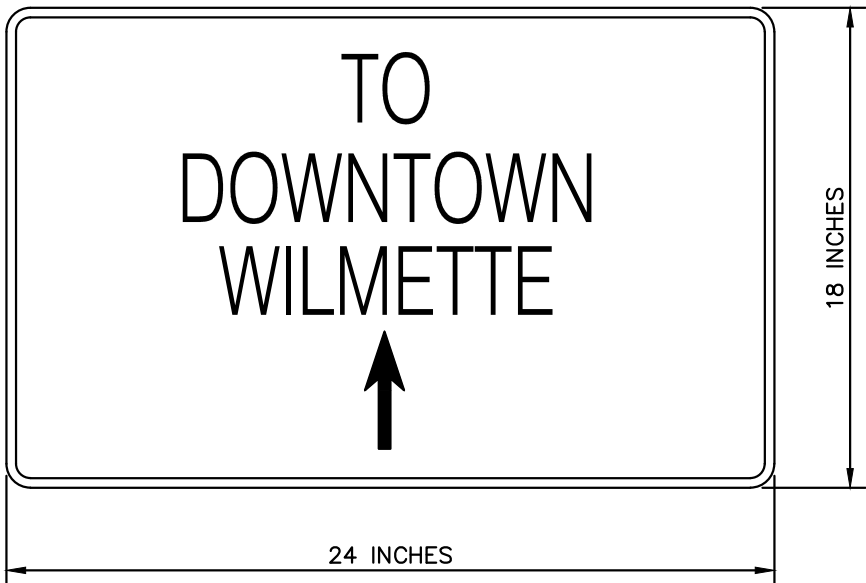
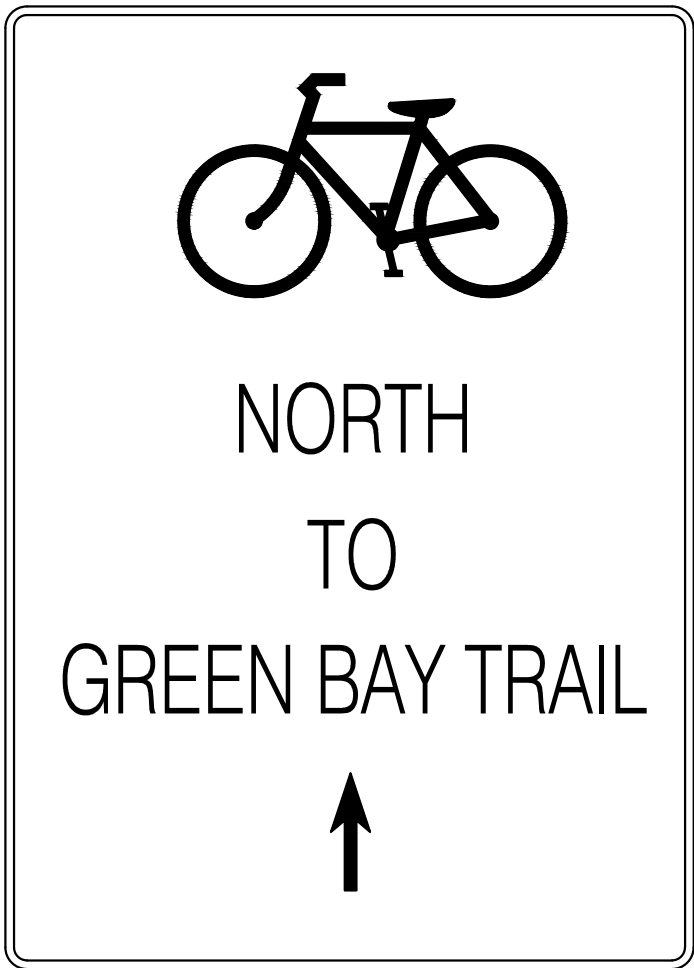


SHARED LANE MARKING  
PER MUTCD FIGURE 9C-9  
WITH RIGHT-TURN ARROW

SIGN A

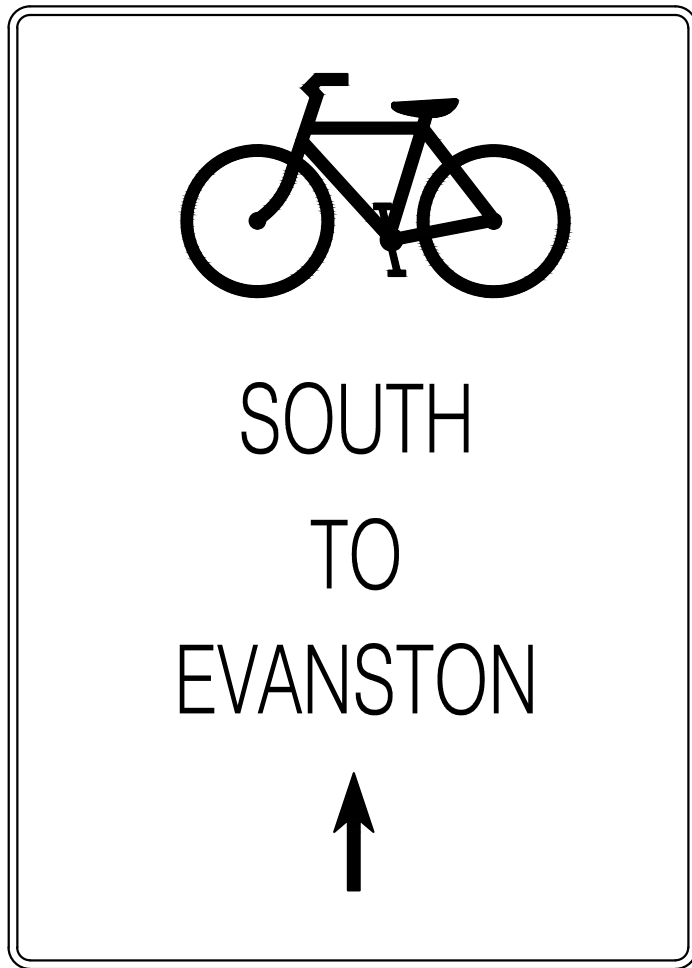


SIGN B



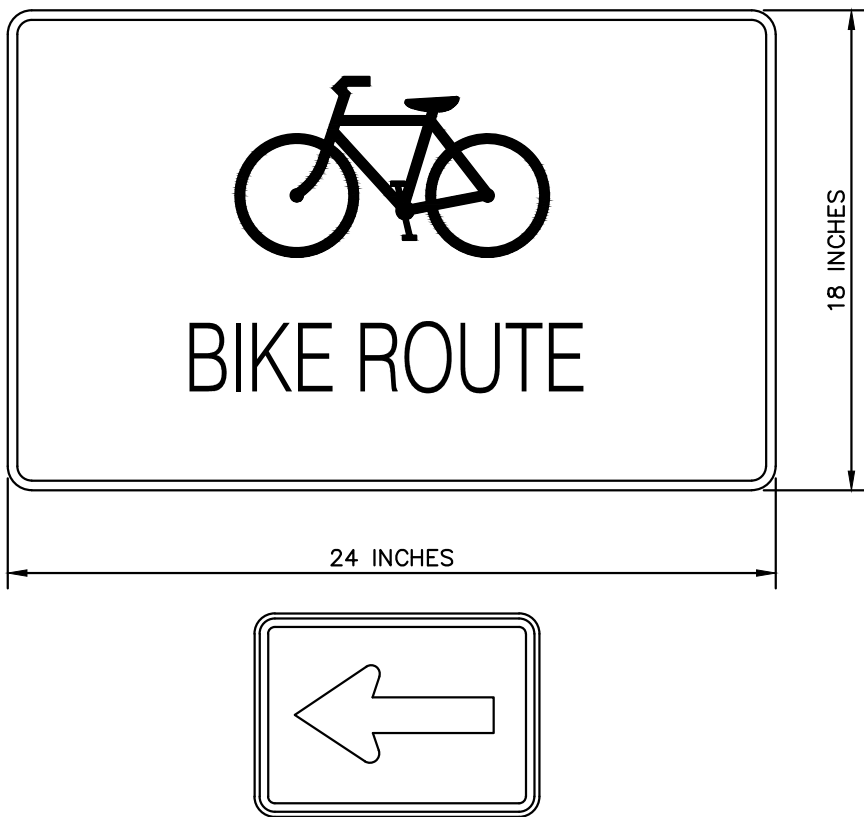
GREEN LEGEND  
WITH WHITE TEXT

SIGN C



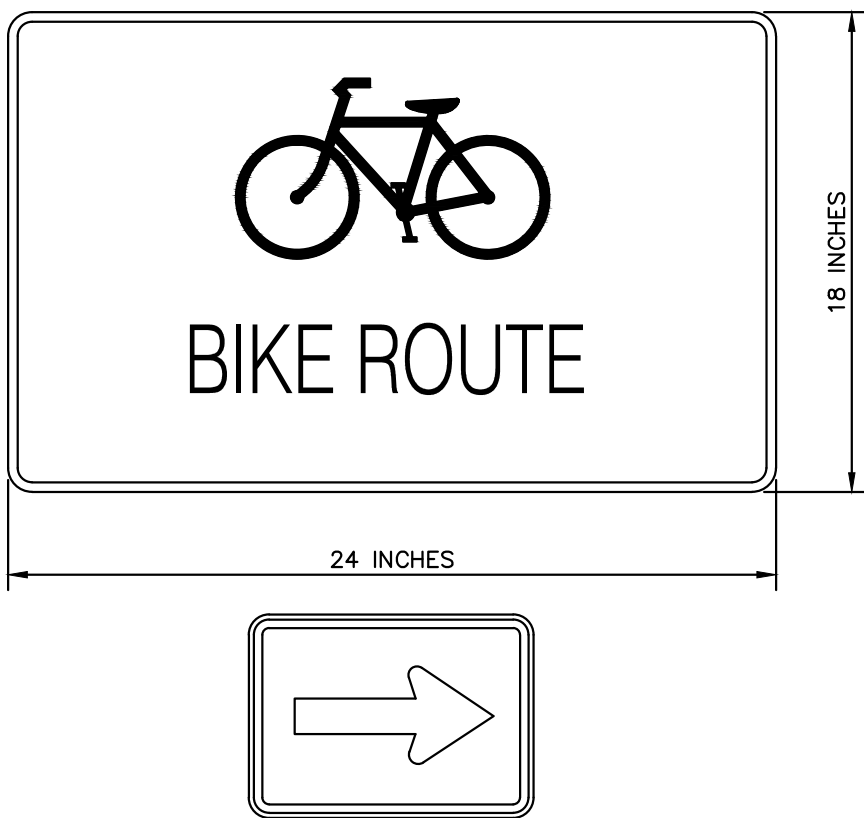
GREEN LEGEND  
WITH WHITE TEXT

SIGN D



GREEN LEGEND  
WITH WHITE TEXT

SIGN E



GREEN LEGEND  
WITH WHITE TEXT

SIGNS/DETAILS NOT TO  
SCALE

No.	REVISIONS	DATE	BY

**Kimley»Horn**

© 2022 KIMLEY-HORN AND ASSOCIATES, INC.  
4201 WINFIELD ROAD, SUITE 600  
WARRENVILLE, IL 60555  
PHONE: 630-487-5550  
WWW.KIMLEY-HORN.COM

KHA PROJECT 168071017
DATE 11/01/2022
SCALE AS SHOWN
DESIGNED BY PL
DRAWN BY DB
CHECKED BY EA

MASTER BIKE AND ACTIVE  
TRANSPORTATION PLAN

FEASIBILITY STUDY AND DESIGN WORK

PREPARED FOR  
VILLAGE OF WILMETTE

COOK COUNTY

ILLINOIS

P. LEMMON

PROFESSIONAL ENGINEER

POPLAR AVENUE STRIPING  
IMPROVEMENTS

SHEET NUMBER

4



No.	REVISIONS	DATE	BY

KHA PROJECT 168071017	
DATE 11/01/2022	
SCALE AS SHOWN	
DESIGNED BY	PL
DRAWN BY	DB
CHECKED BY	EA

P. LEMMON

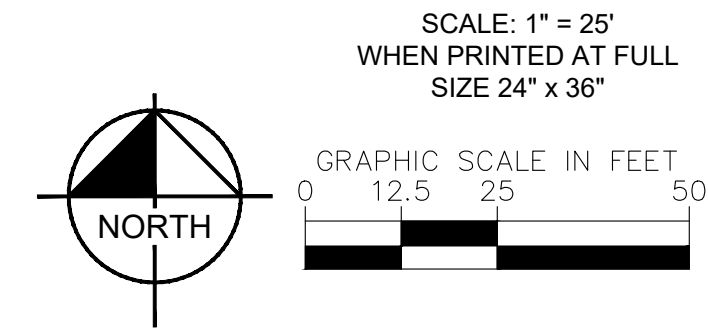
---

PROFESSIONAL ENGINEER

# WASHINGTON AVENUE STRIPING IMPROVEMENTS

SHEET NUMBER

1



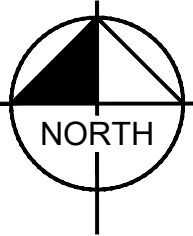
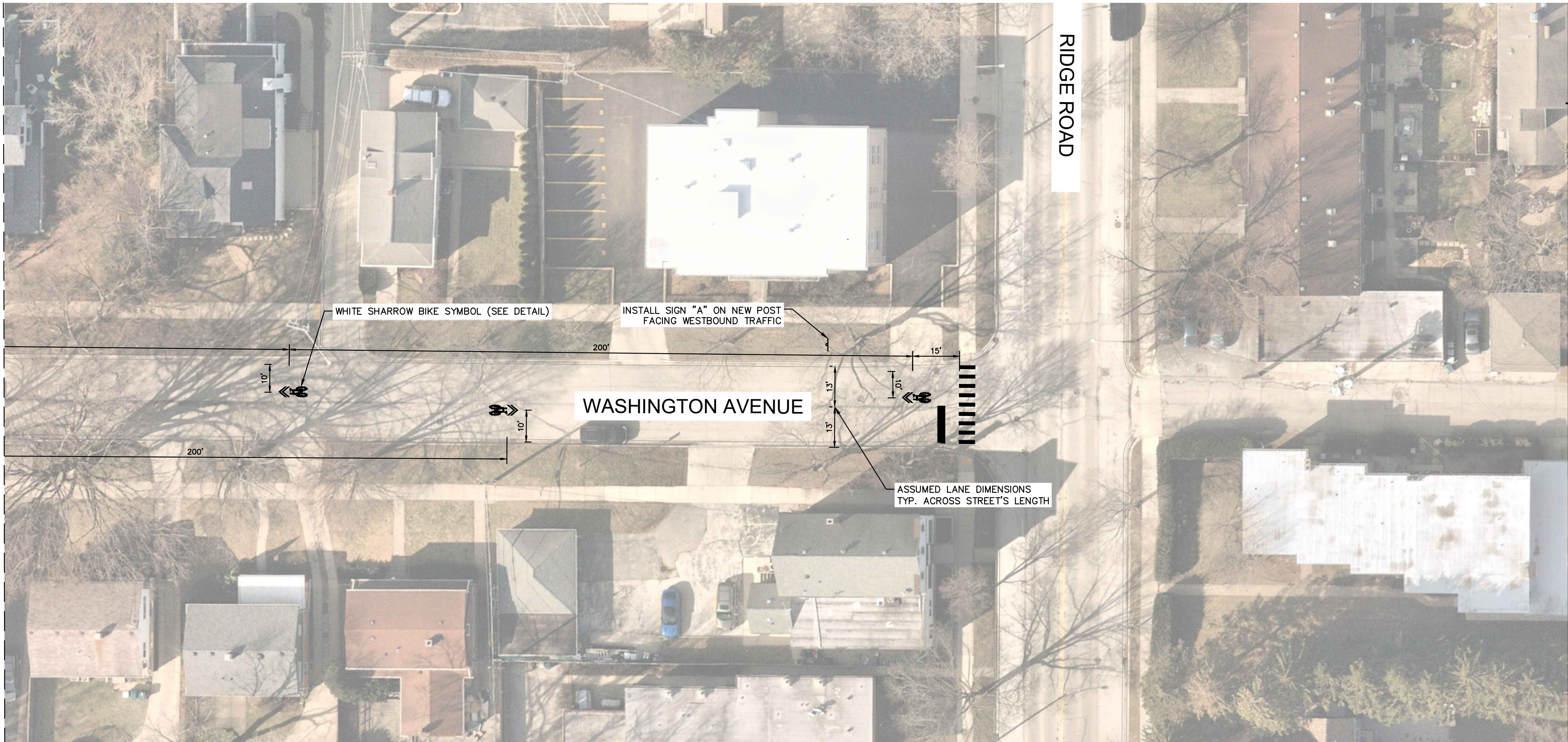


[illegible]

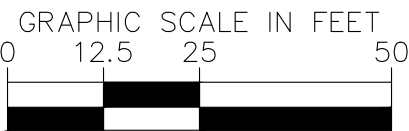


This document, together with the concepts and designs presented herein, is intended only for the specific purpose and client for which it was prepared. Reuse of and improper reliance on this document without written authorization and adaptation by Kimley-Horn and Associates, Inc. shall be without liability to Kimley-Horn and Associates, Inc.

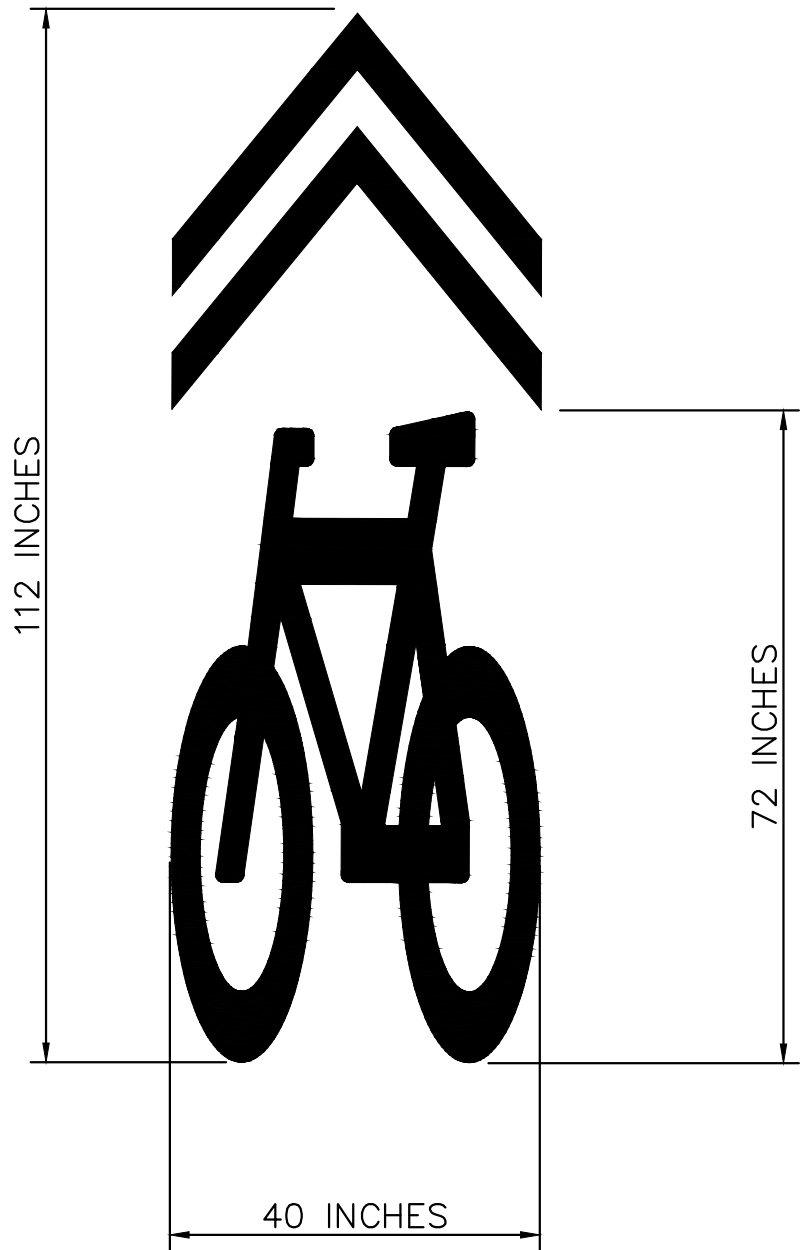
MATCHLINE D - SEE SHEET 2



SCALE: 1" = 25'  
WHEN PRINTED AT FULL  
SIZE 24" x 36"



DETAIL



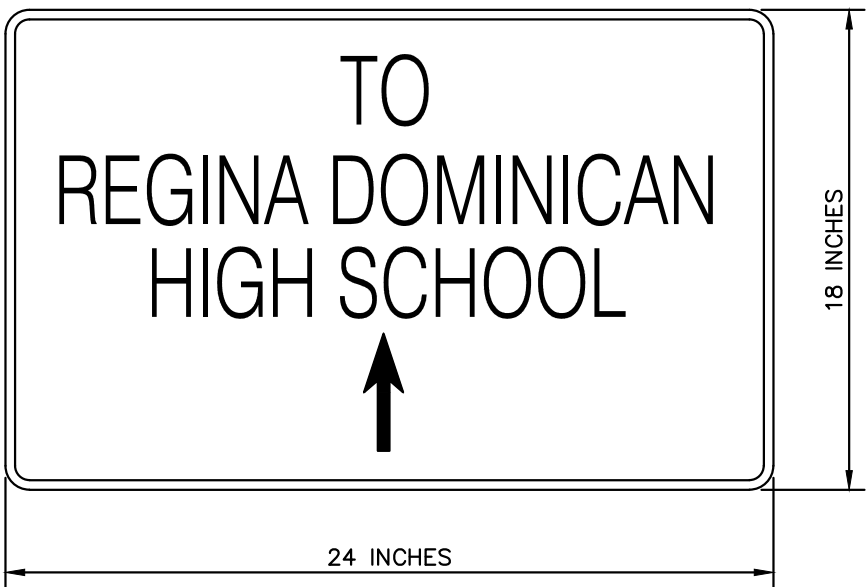
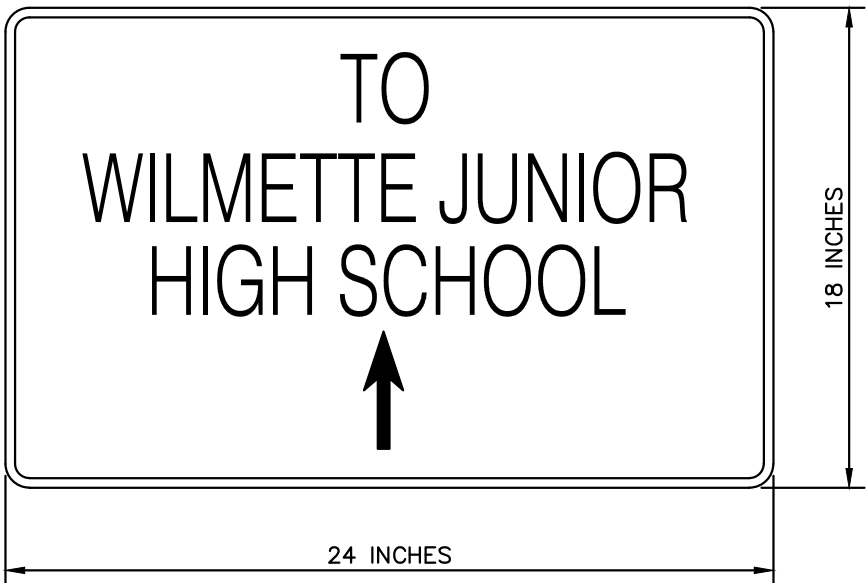
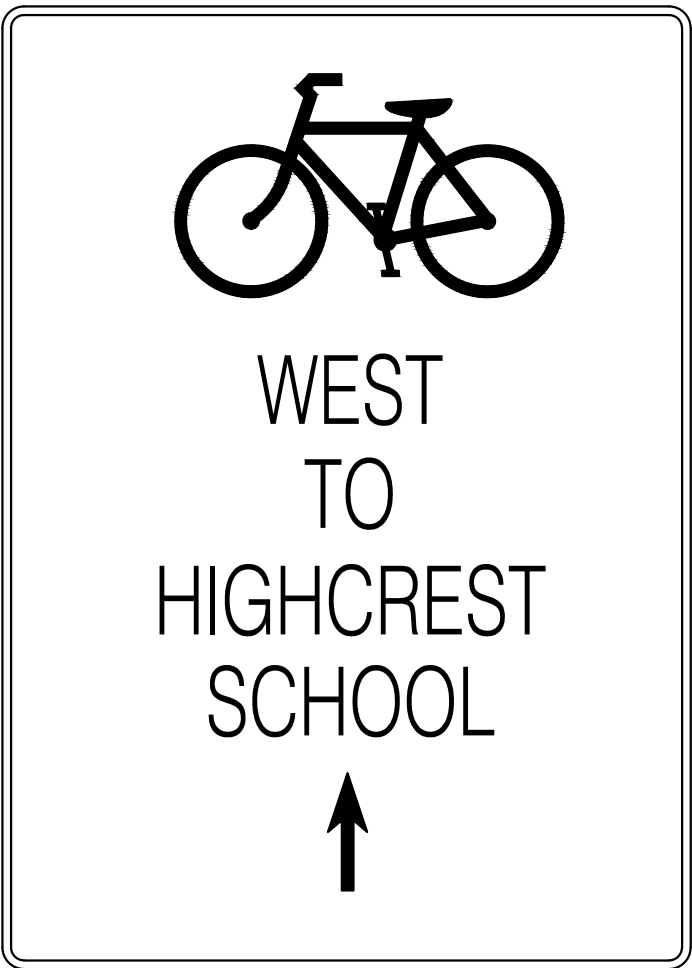
SHARED LANE MARKING  
PER MUTCD FIGURE 9C-9

SIGN A



BICYCLES MAY USE  
FULL LANE  
PER MUTCD R4-11

SIGN B



GREEN LEGEND  
WITH WHITE TEXT

SIGNS/DETAILS NOT TO  
SCALE

No.	REVISIONS	DATE	BY

**Kimley»Horn**

© 2022 KIMLEY-HORN AND ASSOCIATES, INC.  
4201 WINFIELD ROAD, SUITE 600  
WARRENVILLE, IL 60555  
PHONE: 630-487-5550  
WWW.KIMLEY-HORN.COM

KHA PROJECT  
168071017

DATE  
11/01/2022

SCALE AS SHOWN

DESIGNED BY PL

DRAWN BY DB

CHECKED BY EA

**MASTER BIKE AND ACTIVE  
TRANSPORTATION PLAN**

FEASIBILITY STUDY AND DESIGN WORK  
PREPARED FOR  
VILLAGE OF WILMETTE

COOK COUNTY

ILLINOIS

P. LEMMON

PROFESSIONAL ENGINEER

WASHINGTON AVENUE STRIPING  
IMPROVEMENTS

SHEET NUMBER  
**3**