



SUPPORT SESQUICENTENNIAL Celebrations

Thank you for your consideration in donating to the Village of Wilmette Sesquicentennial! This year's upcoming programs and events are being created with you, our residents, in mind. You are the cornerstone of this community and we have a variety of options for you to consider if you are interested in donating to the celebration.

► Monetary Donation to Support Additional Celebration Activities

The 150th Celebration includes many fun and exciting activities and projects. Donations of \$25 and above will receive recognition in the Commemorative 150th Edition of the Wilmette Communicator. Your donation helps support:

- Winter Fest (February 12, 2022)
- Memorial Day Remembrance (May 30, 2022)
- Evanston Symphony at Wallace Bowl (August 24, 2022)
- Village-Wide Art Fair (TBD)
- Village-Wide Celebration (September 10, 2022)

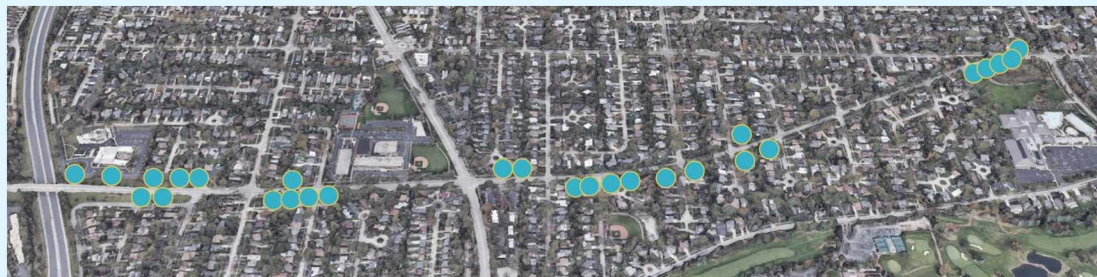
► Sesquicentennial Paver Purchase

Make a permanent impression with an engraved paver purchase for Ouilmette Way to celebrate Wilmette's 150th birthday. Select a small (4" x 8") or large (8" x 8") brick with a personal engraving. Small pavers are allowed 3 lines of inscription with 13 characters per line. Large pavers are allowed 6 lines of inscription with 13 characters per line. NOTE: All letters, spaces and punctuation count as one character.



► Glenview Road Beautification Project

Glenview Road east of Skokie Boulevard will be enhanced with new tree plantings, landscaping, and Village signage. Donors giving \$150 and greater will have their name included on a plaque recognizing their donation.



Tree Images Copyright © Robert O'Brien



SESQUICENTENNIAL DONATIONS

I am interested in making the following donation to support the Village of Wilmette Sesquicentennial:

\$ _____ towards the Glenview Road Beautification Project **

\$ _____ towards General Sesquicentennial Celebration Activities **

\$ _____ Paver Purchase for Ouilmette Way (please complete additional information below)

\$ _____ TOTAL

_____ Check payable to VILLAGE OF WILMETTE (enclosed) (may denote in notes line: Sesquicentennial)

_____ I will pay by cash or credit card at Village Hall (1200 Wilmette Avenue)

**Glenview Road and General donations of \$25 or more, received before APRIL 30, 2022, will be listed in the Commemorative 150th Edition of the Wilmette Communicator.

Please list me as the following: _____

PAVER INFORMATION: Small pavers are allowed 3 lines of inscription with 13 characters per line. Large pavers are allowed 6 lines of inscription with 13 characters per line. If purchasing multiple pavers, please complete a separate form for each paver (copies of this form are acceptable. NOTE: All letters, spaces and punctuation count as one character. The deadline for all paver purchases is APRIL 30, 2022.

Number of Pavers: _____ 4" x 8" paver (\$150 each)

_____ 8" X 8" paver (\$250 each)

Sample 4" x 8"



	1	2	3	4	5	6	7	8	9	10	11	12	13
Line 1													
Line 2													
Line 3													
Line 4													
Line 5													
Line 6													

Send completed form with payment/drop off to:

Village of Wilmette/Sesquicentennial
 1200 Wilmette Avenue
 Wilmette, IL 60091