



- 02 President's Letter
- 03 Sesquicentennial Celebrations
- 05 Sign up for Renewable Energy
- 06 Historical Museum
- 07 Tree Preservation
- 10 Public Works Projects
- 11 Fun and Fireworks at Gillson Park

THE COMMUNICATOR

THE VILLAGE OF WILMETTE NEWSLETTER

SUMMER 2022

THE VILLAGE OF Wilmette
EST. 1872

Music on the Green

A SUMMER CONCERT SERIES PRESENTED BY THE VILLAGE OF WILMETTE

HAVE DINNER AT YOUR FAVORITE VILLAGE CENTER RESTAURANT, GRAB A BOTTLE OF WINE AND A PICNIC BLANKET, AND JOIN US FOR A NIGHT OF MUSIC ON THE FRONT LAWN OF VILLAGE HALL!

<p>TUESDAY, JUNE 21 7:00 PM – 8:30 PM THE BEATTLES</p>	<p>TUESDAY, JULY 19 7:00 PM – 8:30 PM SHOUT OUT</p>	<p>TUESDAY, AUGUST 16 7:00 PM – 8:30 PM CHRIS KARABAS</p>
--	---	---



Summer Events

We are excited to see the return of many summer events this year including Music on the Green, the Sidewalk Sizzle, and July 3 Fun and Fireworks at Gillson Park. It is a great time to get out and enjoy all that Wilmette has to offer. Check out our community partners for upcoming events!

- Wilmette 150 – www.wilmette150.org
- Wilmette Park District – www.wilmettepark.org
- Wilmette Library – www.wilmettelibrary.info
- Wilmette Historical Museum – www.wilmettehistory.org
- Chamber of Commerce – www.wilmettekenilworth.com

Message from the Village President

Summer is here and there so many exciting festivities throughout the Village to enjoy. Wilmette's 150th Birthday celebration is in full swing! I encourage everyone to join in the fun this summer by attending these wonderful events, festivals, and concerts with family, friends and neighbors.

Sensational Summer Events

This summer sees the return of several favorite community events as well as some new ones, and we hope you will take the time to join us and celebrate together. There will be live music returning to several outdoor venues for your listening enjoyment: the Park District is hosting an outdoor concert series at Wallace Bowl and the Mallinckrodt Gazebo, and the Village will continue its popular 'Music on the Green' summer concert series. Treat yourself to dinner or takeout from one of our local restaurants then bring your picnic blanket and lawn chairs to the front lawn at Village Hall and enjoy an evening of music.

If you are interested in shopping, there are a variety of great local opportunities including the French Market and the Summer Sizzle Sidewalk Sale. The French Market is open every Saturday through October and is located just east of the Metra Station. The Summer Sizzle Sidewalk Sale will take place on July 15-16 and will be held at shopping districts throughout the Village. Come out for some great atmosphere and to support our local merchants!

One of my family's favorite summer traditions is to attend the Wilmette Park District's Independence Day celebration. Festivities take place on July 3 starting at 8 a.m. with the Yankee Doodle Dash run and walk. Come back to Gillson Park at 5 p.m. with the whole family for an afternoon and evening full of music, entertainment, childrens' games, food, and, of course, an amazing fireworks display.

2022 continues to be a special year as the Village celebrates its 150th Birthday. A huge thank you to the Sesquicentennial Planning Committee who have been hard at work planning a spectacular series of year-long community events and celebrations. The Memorial Day Unity March and Ceremony was a wonderful event, with participants into the thousands, including over 60 Wilmette civic, service, governmental, religious, business, and other organizations. We were honored to have Wilmette native

and retired 4-star Naval Admiral and former head of the nation's cyber security, Michael S. Rogers, deliver the Memorial Day address.

New and exciting celebrations are planned for this summer to commemorate this milestone. On August 24, the Evanston Symphony Orchestra will perform a special pops concert at the Wallace Bowl in honor of the Sesquicentennial. Our year-long 150th celebration will culminate on September 10 when the Village hosts 'The Wilmette Block Party'. There will be great bands, delicious dining options, and entertainment for the whole family. Look for an upcoming commemorative issue of the Communicator with 150th event information, recognition of all those supporting the Sesquicentennial and information about the history of Wilmette.

Exciting Economic Developments

Over the last several months, the Village has taken major steps toward attracting great business partners to our community to improve shopping and dining opportunities. We are excited to welcome WS Development and Wayfair to Edens Plaza, the Caddyshack Restaurant, Buck Russell's Sandwich Shop, and many more to the Wilmette community. We look forward to these and other upcoming developments.

The Village continues to plan for the future through the Comprehensive Planning process, which will help to guide growth and development. Over the summer, the Comprehensive Plan will focus on Business + Commerce, Housing Variety + Affordability, and Neighborhood District Plans. This fall, the themes will turn to Active Transportation and Environmental + Community Sustainability. I urge you all to take the opportunity to have your voice heard through surveys, open houses, and workshops.

Ouilmette Way will reconstruct the downtown alley from 12th Street to Wilmette Avenue.

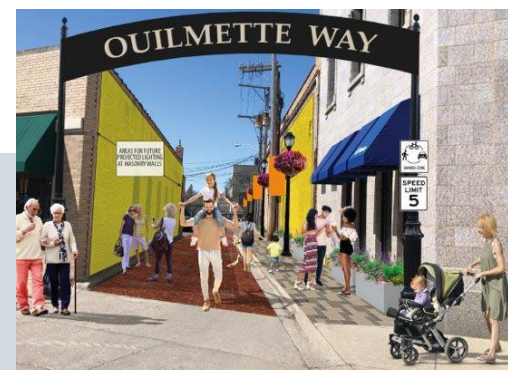


Village President Santa Plunkett

Ouilmette Way is Underway

One of the upcoming projects in the Village that I am very excited about is the creation of Ouilmette Way. Plans have been approved to reconstruct the downtown alley from 12th Street to Wilmette Avenue. I want to thank North Shore Community Bank for their generous contribution toward the project which will include the installation of new gateway signs, a designated paver walkway, updated lighting, and decorative planters and landscaping. A unique art installation is also in the works! These improvements will help to create a welcoming and pedestrian friendly shared path connecting the Metra Station parking lot to the heart of downtown Wilmette.

I want to thank all our residents and Village employees that help make our community a great place to work and live. Please feel free to reach out to me, the Village Board, or Village Staff to share your thoughts and ideas. I look forward to making the most of this special summer and celebrating Wilmette's 150th Birthday with all of you.



Sesquicentennial Celebrations

The Village is counting down to our 150th Birthday. The Village of Wilmette was incorporated as a municipality on September 18, 1872. Please visit www.wilmette150.org for more information on the history of Wilmette and all the ways you can be part of the celebration. Save the Date for the Wilmette Block Party on September 10 in the Village Center. It will be a day full of activities, performance, food and drink, and an opportunity to celebrate Wilmette with family, friends, and neighbors.



Voice of Wilmette: An Oral History Project

This collaborative project between the Wilmette Historical Museum and Wilmette Public Library is collecting stories from the Wilmette community. The purpose of this project is to preserve the memories and experiences of individuals who are connected to Wilmette. For more information go to www.wilmettelibrary.info/research/local-history/oral-history

Sesquicentennial Photography Project

The Sesquicentennial Photography Project will document the Village's Sesquicentennial celebration and create a collection of photos that support the theme "Building Community." Members of the public are invited to submit photos to the Village from now until September 30. In October, photos will be selected for display at an exhibition. For more information go to wilmette150.org/home/sesquicentennial-photography-project/



Historical Banners

Check out the Sesquicentennial banners that have been displayed along Green Bay Road, Lake Avenue, Ridge Road, Skokie Blvd, and at Linden Square! In total, 86 banners are displayed throughout the Village, these banners are in celebration of Wilmette's unique history. For more information go to wilmette150.org/historical-banners/

Ready Set Wilmette - Comprehensive Plan



appreciate everyone who has participated as community input is an essential part of the process. The Comprehensive Plan is about you, your family, your neighbors and how the twelve different planning themes weave together to set the course for Wilmette's future. Information on these themes is on the www.readysetwilmette.com website.

Over the summer season, we are excited to dive into the next set of Planning Themes: Business + Commerce, Housing Variety + Affordability, and District Plans. Then during the fall season, the themes that will take center stage include Active Transportation and Environment + Sustainability.

The www.readysetwilmette.com website has tons of opportunities for participation including map comments, idea sharing forums, polls, and overviews of prior events. If you haven't participated yet, there are still great opportunities to have your voice heard. While you are there, please subscribe for email updates so you don't miss a beat of this evolving discussion of Wilmette's future.

Get Involved in Your Community

Do you want to use your skills and experience to serve your community? Join over 70 other Wilmette residents serving on 13 Boards and Commissions. The Village is looking to fill vacancies on several Boards and Commissions including the Environmental and Energy Commission (EEC), the Human Relations Commission (HRC), and the Historic Preservation Commission (HPC). To learn more visit www.wilmette.com/government/boards-commissions/ and fill out a Talent Bank Questionnaire.

Follow the Village!

Want to know the latest on summer events in Wilmette? Curious about what's going on with the stormwater project? Sign up for the Village's weekly E-News and follow the Village on Twitter, Facebook and Nextdoor for regular updates on happenings around Wilmette! wilmette.com/connect



Bike Safety

While enjoying summer bike rides to your favorite destinations, the Wilmette Police Department recommends the following safety rules to keep you and others safe.

- **Bike readiness** – check your tires, brakes, and make sure your bike is in good working condition
- **Wear a helmet** – every rider, every time
- **Be visible** – equip your bike with reflectors on the rear, front, pedals, and spokes; wear neon, bright, or reflective clothing; and install flashing headlights and taillights
- **Follow the law** – obey the bicycle rules of the road
- **Be aware** – be sure to yield the right of way to pedestrians and use hand or audible signals
- **Share the roadway** – ride on the right side of the road in a straight predictable path and always be aware of traffic around you
- **Lock up your bike** – help to prevent a crime of opportunity
- **Walk your ride** – downtown sidewalks are busy with pedestrians, pets, strollers, and diners; for everyone's safety, riders should walk their bikes in downtown



Sign Up for Smart911

In an emergency, every second counts. The Village of Wilmette offers residents the option to sign up for Smart911, a free service that provides 911 operators with critical medical and household information needed during an emergency. To register, follow these simple steps:



Smart911™

1. Visit the Village website's [Smart911](#) page or download the Smart911 App
2. Create your Safety Profile for yourself and your household (this information is kept confidential and only accessed when you dial 9-1-1)
3. Smart911 will send a message to your registered email address confirming your account
4. Upon verification, Smart911 will deliver your Safety Profile to 9-1-1 answering centers

The Village will also use this system to send emergency notifications, such as drinking water contamination, missing persons, or hazardous conditions and non-emergency notifications, including: special events, road detours, and parking restrictions.



21
19
16 **Concerts in the Park**



4 **Independence Day**



15-
16 **Summer Sizzle Sidewalk Sale**

When in Doubt, Call Us Out

The Wilmette Police Department has seen an increase in ruse burglaries which is a type of burglary that is committed by offenders generally traveling in pairs. One offender uses a 'ruse' to distract the victim, while the other offender enters the home to search for and steal cash, jewelry and other valuable items. Offenders may use stories including asking about a homeowners' water service, informing the homeowner there is an electric problem, claims about problems with the neighbor's house, asking about the property line, or claiming to have worked on the home in the past.

Share these tips with family, friends, neighbors, and colleagues! If you feel you were a victim of a ruse burglary or if you have seen suspicious vehicles and/or subjects approaching neighbors, please call 9-1-1 to report these incidents.

Safety Tips:

- Do not allow anyone in your home unless you know them personally or it is a scheduled appointment
- If a solicitor comes to your residence, take notice of their vehicle (make, model, color, type) and their attire and physical characteristics
- If you choose to speak with a solicitor or utility worker, never leave your front door unlocked or unattended
- Ask to see identification. A commonly used ruse is for the offenders to pose as a Village employee or utility worker. A legitimate utility or government worker will have proper apparel and will never object if you ask for ID. You may verify employment by calling the utility company or if they claim to be a Village employee by calling the Police Department at 847-256-1200.



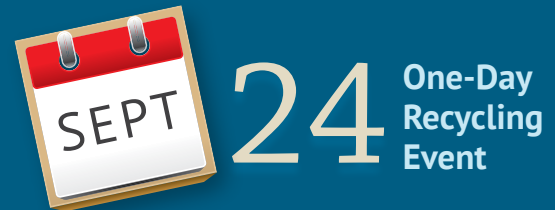
Gas Leaf Blower Ban in Effect

To reduce noise and air pollution, homeowners and residential landscapers are prohibited from using gasoline-powered leaf blowers from May 15 through September 30. The Village notifies commercial landscapers of the ordinance and enforcement, but the Village needs resident's help to reduce this nuisance. Please speak to your landscaping contractor about using battery or electric powered equipment. Please be a good neighbor and help prevent pollution.

**Quieter.
Cleaner.
Greener.**

Sign-Up for Renewable Energy

Residents can now start to enroll their residential energy accounts into the Community Solar program! In September 2021, the Village Board of Trustees adopted Wilmette's Greenest Region Compact Sustainability Plan. This plan included many goals including the implementation of a community solar program that would provide residents access to renewable energy and cost savings. In early 2022, the Village joined with other Illinois communities to partner with the Metropolitan Mayor's Caucus to provide the Community Solar Program. If you subscribe you may receive energy bill credits through solar installations. This program is a great way for residents to support local sustainability initiatives while receiving cost savings on their electric bills! For more information go to www.wilmette.com/green-initiatives/community-solar/



CPR and AED Courses

The Fire Department is excited to announce the return of CPR and AED training courses. The Heartsaver certification program is available to all residents and teaches residents how to effectively deliver CPR and use an AED in accordance with American Heart Association guidelines; also offered is a BLS course that is available for healthcare providers. Classes will be taught by Wilmette firefighters at Fire Station #26; 1304 Lake Avenue. Heartsaver courses are \$25 and offered monthly and the BLS courses are \$75 and offered every other month. To register please call the Fire Department at 847-251-1101 and to view upcoming dates and times go to www.wilmette.com/fire-department/cpr-aed-training/

Car Seat Safety Checks

The State of Illinois requires that vehicle passengers must be secured in a seat belt or an approved child restraint system. Please visit nhtsa.gov or safekids.org for recommendations on appropriate types of seats for children, installation information, and other information on child safety seats. Residents can register for car seat safety checks and installations with the Wilmette Fire Department. Certified safety personnel can assist residents with the proper installation of car seats to ensure they are used safely. To schedule an appointment please call 847-251-1101.



Smoke Alarms

Starting January 1, 2023 single and multi-family homes using smoke alarms with removable batteries will be required by the State of Illinois to install new alarms that feature a 10-year sealed battery. Please check with your local retailer to upgrade your smoke alarms. Please contact the Wilmette Fire Department at 847-251-1101 with any questions about smoke alarms. In addition to upgrading your smoke alarms remember these safety tips: install smoke alarms on every level and in every bedroom, test alarms monthly, plan and practice your escape route with your family, and remember if your smoke alarm does sound, leave your home immediately and call 9-1-1.

Welcome to New Businesses

The Village welcomes its newest businesses and thanks them for choosing Wilmette. Please remember to visit these and other Wilmette businesses while shopping this summer. Did you know that 2% of almost every dollar you spend at Wilmette retailers goes directly back to the community? By supporting our businesses and buying locally, your sales tax dollars help pay for things like summer concerts and village services.



- **Just Food for Dogs**, 1515 Sheridan Rd., www.justfoodfordogs.com, healthy food for your pets
- **Buck Russell's**, 1137 Greenleaf Ave., www.buckrussells.com, bakery & sandwich shop
- **Mayweather Boxing & Fitness**, 3217 Lake Ave., www.mayweather.fit/northshore-il, group boxing and fitness classes
- **Cycle Bar**, 116 Skokie Blvd., www.cyclebar.com, indoor cycling classes, coming soon
- **The Lawn**, 3900 Fairway Dr., www.thelawngrill.com, restaurant, coming soon
- **North Shore Exchange**, 1100 Central Ave., www.northshoreexchange.org, luxury designer consignment, coming soon
- **Kick Start Pediatric Therapy**, 3545 Lake Ave., www.kickstartptn.com, pediatric therapeutic services
- **R.O.M.E. Sandwich Company**, 1165 Wilmette Ave., hot specialty sandwiches with an Italian twist, coming soon
- **North Shore Garage Door**, 3538 Lake Ave., www.northshoregaragedoors.com, garage door sales, installation, and repair

Village-wide Gift Card

The Wilmette/Kenilworth Chamber of Commerce and the Village of Wilmette have partnered to offer the 'Shop Wilmette Gift Card', a community-based digital gift card that makes it fun and easy to keep local spending local. Purchase Shop Wilmette Gift Cards to use at the one of our current, and growing, list of participating shops in town. This digital gift card is a fun and easy gift for birthdays, holidays, or just to show appreciation. For more information and to buy visit www.wilmettekenilworth.com



Wilmette Historical Museum

For more information on upcoming events, visit www.wilmettehistory.org or call 847-853-7666.

Sesquicentennial Membership Drive

150 for Wilmette's 150th

In honor of Wilmette's 150th, the Wilmette Historical Society hopes to add 150 new members in 2022. Membership benefits include Museum News, the Society's newsletter, invitations to members-only events, as well as free admission to most programs. Your membership helps support the work of the Museum. For a limited time only, all new memberships will be extended through March 2024. Join today at wilmettehistory.org/join



Audio Tour Wilmette Local Legends

Available June 1, 2022
Free

This two-part, self-guided audio tour will bring you outside the homes of some of Wilmette's notables starting with film star Ann-Margret and ending with professional makeup artist and entrepreneur Bobbi Brown. At each stop, you will learn a bit about a local celebrity's life in Wilmette.

Enjoy the tour by car or bicycle or, if you are ambitious, on foot. The tour will be available beginning June 1. To begin the tour, visit the Museum website or scan the QR code from the two-page map available outside the Museum's main entrance.

Family Event Scavenger Hunt: Where is Postmaster McDaniel's Mail?

June 12 – August 21, 2022
Free

Head out with your family this summer for some local history and a fun scavenger hunt at participating Wilmette businesses to find Postmaster McDaniel's lost mail! Kids aged 13 and younger can win prizes offered by Homer's Ice Cream, Lou Malnati's, Lawrence Deans, Wilmette Bicycle & Sports Shop, and Central Station Coffee & Tea. Beginning June 12, pick up a free scavenger hunt game board at the Wilmette Historical Museum (609 Ridge Road), the Youth Services Department in the Wilmette Public Library, or download from the Museum website. Complete the activity at your own pace anytime between June 12 and August 21.



Annual Event Auto Historica XVIII Vintage Car Show: Automobiles Through the Ages

Sunday, September 25, 2022
12:00 – 3:00 p.m.
Free

Auto Historica is super-sized this year! In celebration of Wilmette's 150th birthday, Auto Historica XVIII will feature a variety of vintage cars from each decade. Come see these vehicles on display in the south half of the Metra parking lot in downtown Wilmette. Bring the kids, stroll around at your leisure, and chat with the owners. If you're interested in showing your vintage car at the event, please email museum@wilmette.com or call 847-853-7666.

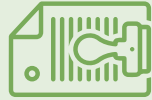


TREE REMOVAL PERMITTING GUIDE

TREE PRESERVATION POLICY

Trees provide enormous value to the community through environmental benefits, quality of life and community character. In 2021 and 2022, the Village reviewed its tree preservation policies to ensure the preservation of the Village's tree canopy. The tree preservation policy was amended to minimize the number of unnecessary healthy tree removals, and ensure sufficient replacement requirements when healthy trees are removed to maintain and grow the community's tree canopy. Fees generated from the new preservation policy will be used to administer the program and support new public and private tree plantings.

WHEN DO I NEED A TREE REMOVAL PERMIT?



Protected trees are those that are 6" or more in Diameter Breast Height (DBH) and require a \$75 permit; each permit will be reviewed by the Village Forester. All healthy tree removals 10" or more will require replacements or a fee-in-lieu of new plantings. See back page for fee information.

WHAT IF MY TREE IS DEAD/DYING/DISEASED, HAZARDOUS, OR AN INVASIVE SPECIES?

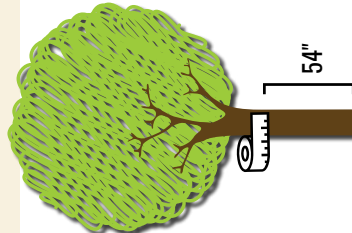
The Village Forester will inspect all tree permits; fees and other requirements will be waived for dead, dying, diseased, hazardous, or invasive trees.



WHAT IS DBH AND HOW DO I MEASURE IT?

DBH is the standard for measuring the size of a tree. The tree is measured at 54 inches (4.5 feet) from the ground.

- Wrap a soft measuring tape around the tree at 54 inches off the ground to find the circumference
- Divide the circumference by 3.14 to determine the DBH



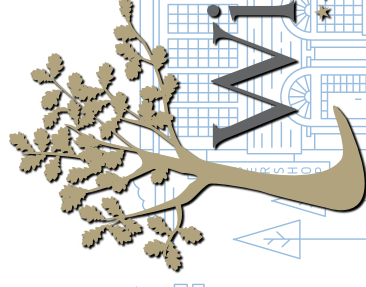
WHAT IF I REMOVE A TREE WITHOUT A PERMIT?

Trees removed without a permit will have a maximum fine of \$7,500 plus the requirement to plant replacements or a fee-in-lieu of new plantings.



HOW DO I FIND AN ARBORIST?

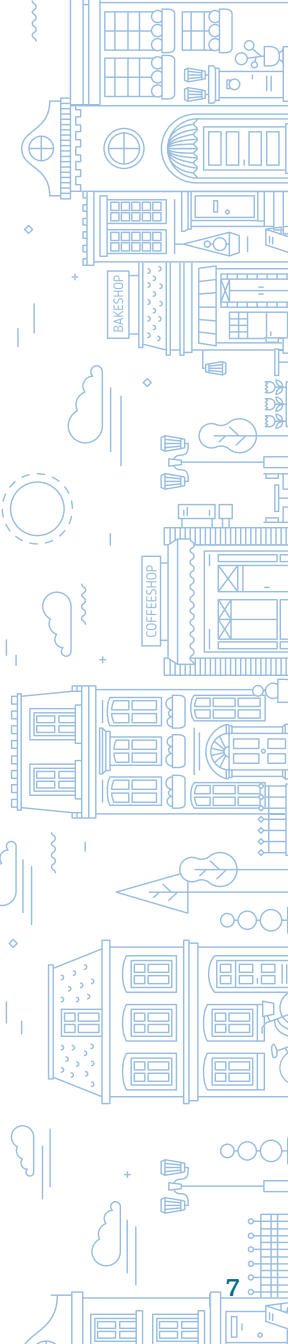
The Village recommends that all tree removals use a company with an arborist certified by the International Society of Arboriculture (ISA). Tree and landscaping companies credentialed through the ISA can be found at www.isa-arbor.com.






THE VILLAGE OF

Wilmette

EST. 1872

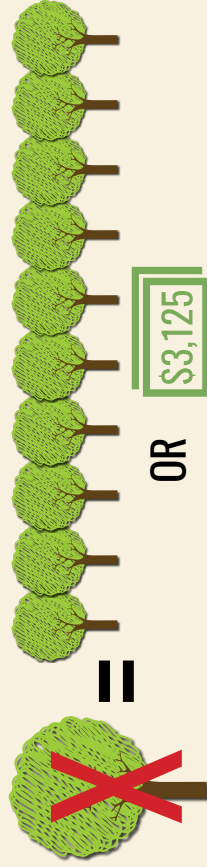


WHAT ARE THE REPLACEMENT REQUIREMENTS FOR HEALTHY PROTECTED TREES?

- If the tree is greater than 10" but less than 12", plant  trees or 
- If the tree is greater than 12" but less than 16", plant  trees or 
- If the tree is greater than 16" but less than 20", plant  trees or 

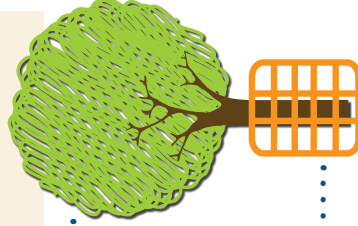
WHAT ARE THE REPLACEMENT REQUIREMENTS FOR HEALTHY HERITAGE TREES?

Heritage Trees require an inch-for-inch replacement or a fee-in-lieu of \$125 per inch. Meaning that if a 25" inch tree was removed, 25" inches of new trees (approximately 10 trees) would need to be planted or a fee of \$3,125 would be charged.



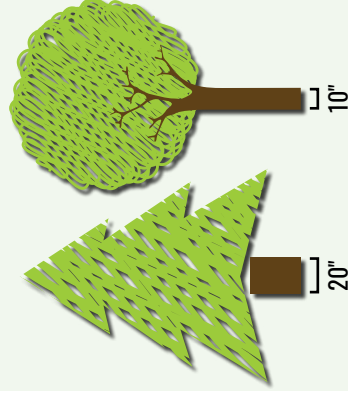
HOW ARE TREES PROTECTED DURING CONSTRUCTION?

A tree survey and protection plan must be submitted by a certified arborist for demolition, new construction, and large additions. These projects also require the installation of temporary fencing along the critical root zone and other measures deemed necessary to protect trees.



WHO DO I CONTACT?

You can contact the Village Forester/Tree Preservation Officer at 847-853-7622 or hansenj@wilmette.com.



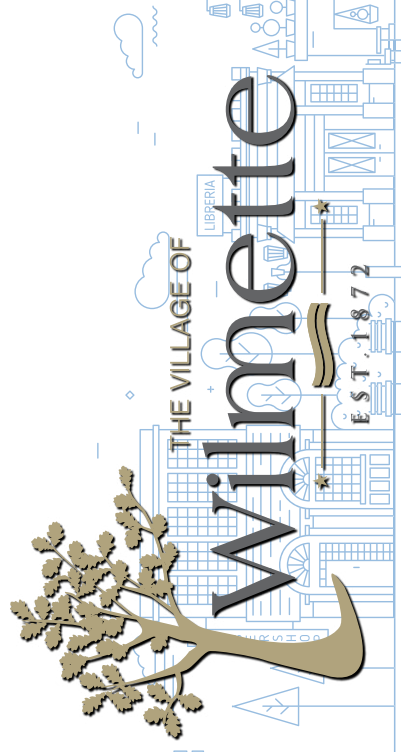
WHAT IS A HERITAGE TREE?

The Village has defined Heritage Trees as any tree that is 20" DBH or greater and both Oak and Hickory genus trees that are 10" DBH or greater. Heritage Trees provide additional benefit to the community and have additional fee and removal requirements.

DOES THE LOCATION OF A TREE REMOVAL MATTER?

For all Heritage Tree removals, neighbors must be notified and a permit submitted.

- For Heritage Trees not located in a required yard or located in the required side yard, the permit is reviewed by Village staff.
- For Heritage Trees located in the required front or rear yard, an application for administrative variation must be submitted.
- For Heritage Trees removed for recreational purposes (pools, ice rink, etc.), an application for a zoning variance must be submitted.



One-Day Recycling Event

Saturday, September 24, 2022

9:00 a.m. – 12:00 p.m.

Centennial Park Southwest Parking Lot
(Enter off Old Glenview Road Only)
2300 Old Glenview Road, Wilmette

The Village is partnering with State Senator Laura Fine, State Representative Robyn Gabel, MWRD Commissioner Kimberly du Buclet, the Wilmette Park District, and the Solid Waste Agency of Northern Cook County (SWANCC) to host a one-day recycling event including document destruction, prescription drug take-back, and electronics recycling.

Paper documents must be in paper shopping bags or cardboard boxes and are limited to six file size boxes or bags per vehicle; please remove binders and metal clips and do not use plastic bags. Visit the Village's website for additional information on the drug take back and electronic recycling guidelines.

This event is open to all Wilmette residents and materials from businesses, schools, or institutions will not be accepted. For more information, contact Public Works at 847-853-7500 or pubworks@wilmette.com

Wilmette Recognized as Tree City USA

For the 38th consecutive year, the Village of Wilmette is proud to be recognized by the Arbor Day Foundation as a "Tree City USA" community! This recognition is thanks to our dedicated Public Works Forestry Division and the support of our residents through tree planting programs, which maximize the number of trees planted annually and help keep our community green!



Water Quality Report

The 2021 Annual Water Quality Report is now available. Please go to wilmette.com/water-management/water-quality-reports to view the 2021 Annual Water Quality Report and learn more about your drinking water. This report contains important information about the source and quality of your drinking water during 2021, and that the drinking water supplied by the Wilmette Water Plant continues to meet or surpass all federal and state drinking water standards. If you would like a paper copy of the report mailed to your home, please call 847-853-7535.



Water Service Inventory

Delivering safe and high-quality drinking water to over 150,000 residents and businesses is core to the Village's operation. In alignment with that mission, the Village adheres to all state and federal regulations including the requirement that the Village perform a water service line material inventory by 2024.

The Village has started the collection of service line information and has sent postcards to all properties. The Village encourages all residents to fill out the Water Service Line Inventory survey including the submission of photos to the Village to help in this effort. The inventory will be used to develop a long-term lead service replacement program.

Water service line materials used throughout Wilmette include copper, galvanized pipe, and lead. For helpful information on identifying water service types and submitting a survey, please visit www.wilmette.com/waterservice/

WATER SERVICE LINE INVENTORY



Composting and Yard Waste

Residents with yard waste toters can also compost food scraps like fruits, vegetables, eggshells and coffee grounds! Yard Waste and compost is collected on the same day as your regular

trash and recycling and collection extends through the last full week in November. Join the over 800 households that have signed up for this program. You can visit the Village website for more information or contact Public Works at 847-853-7500 or pubworks@wilmette.com.

Residents have a choice of a 96-gallon or 35-gallon cart. A 35-gallon cart is recommended for residents who primarily compost food scraps. A larger cart is recommended for residents who will also compost yard waste.

Yard Waste bags, bundles and toters must be affixed with Village Yard Waste stickers to be collected. Yard Waste stickers (\$2.25 each) are available for purchase online and at the Village Hall, Chalet Nursery, Millen Hardware, and both Wilmette Jewel Food Stores.

Summer Construction is Underway

The Village is investing \$5.2 million in capital infrastructure improvements this year to rehabilitate local roads, alleys, and sidewalks!

- Road Program – Resurface 2.3 miles of local roads. Includes intermittent repairs to damaged concrete curbs, sidewalks, and utility structures located in the public Right-of-Way.
- Alley Program – Reconstruct 4 alleys with concrete pavement over a new stone base.
- Brick Street Reconstruction – Rehabilitate Forest Ave. (from Wilmette Ave. to 9th Street) with original brick pavers over a new stone base.
- Brick Street Renovation – Relay brick pavers on 16th Street (from Wilmette Ave. to Highland Ave.) over a new stone base.
- Concrete Maintenance Program – This program consists of three maintenance projects to maintain local sidewalks and curbs: Sidewalk Grinding, Sidewalk Mudjacking, and Sidewalk & Curb Replacement.
- Pavement Maintenance Program – This program consists of three preventative maintenance projects to extend the service life of local streets: Pavement Rejuvenation, Crack Sealing, and Asphalt Patching.

For more information on these Engineering projects, go to www.wilmette.com/CapitalProjects



Neighborhood Storage Project



The final Phase of the Neighborhood Storage Project to reduce flooding west of Ridge Road is in full swing. Installation of the new storm sewers in Kenilworth Gardens and other neighborhoods began in March and will continue through November. The underground stormwater storage vault under Thornwood Park will begin after the last day of school and be substantially completed in late August.

When completed in 2022, the Neighborhood Storage Project will be the largest capital infrastructure investment in Wilmette and protect 98 percent of

homes west of Ridge Road from structure flooding during a ten-year rain storm.

For more information on the project, including detailed project updates, visit www.wsnsp.com

Permits and Inspections

To help protect the property owner, neighbors, and the Village, permits and inspections are required for most projects. Permits and inspections are required for a variety of projects to ensure that the work on your home has been completed to code. It is the owner's responsibility to make sure that necessary permits have been granted and inspections are scheduled and successfully passed. One tip: ask your contractor(s) to provide proof of passed inspections before making a final payout.

As the Village seeks to close out projects, homeowners may receive a courtesy letter from the Village reminding you that inspections or re-inspections for an issued permit have not been completed. For more information about building permits and inspections, see our website at www.wilmette.com/permits or call Community Development at 847-853-7550.



Housing Our Own Raffle

Housing Our Own, an organization that supports the lives of Wilmette's seniors and individuals with disabilities, is holding a raffle for a chance to win an all-electric BMW i4. Tickets are \$100 each, proceeds benefit low-income Wilmette seniors and individuals with disabilities. To purchase tickets and for complete rules visit www.housingwilmette.org



Sidewalk Sale/Summer Sizzle – July 15-16

The Summer Sizzle will take place on Friday and Saturday, July 15 to 16 in Downtown Wilmette, Plaza Del Lago, Green Bay Road, and West Wilmette. The event will include merchants and vendors on the sidewalks and will have entertainment, including music, a roving juggler, air brush tattoos, and a balloon artist.



RUN & WALK | ADULT BEVERAGES | FINISHER MEDALS | FOOD TRUCK | PATRIOTIC PRIDE



JULY 3 AT 8 A.M.

YDD2022.EVENTBRITE.COM

Pre-registration required - no on-site registration. Last day to register: 6/29

STARS & STRIPES SPONSOR:

de Giulio®
KITCHEN DESIGN

SPANGLED SPONSOR:



WILMETTE PARK DISTRICT | INDEPENDENCE DAY CELEBRATION | GILLSON PARK

SUN.
JULY 3
**FUN &
FIREWORKS!**

FESTIVITIES BEGIN AT 5 P.M.
FIREWORKS AT 9:30 P.M.



FOOD VENDORS, LIVE MUSIC & FIREWORKS SHOW! Visit our website or scan the QR Code for information and the event schedule:

WILMETTEPARK.ORG/INDEPENDENCE-DAY-CELEBRATION

Connect with Us

Village Board

President

Senta Plunkett plunketts@wilmette.com

Trustees

Peter Barrow barrowp@wilmette.com

Kathy Dodd doddk@wilmette.com

Gina Kennedy kennedyg@wilmette.com

Justin Sheperd sheperdj@wilmette.com

Kate Gjaja gjajak@wilmette.com

Dan Sullivan sullivanand@wilmette.com



1200 Wilmette Avenue
Wilmette, IL 60091

PRESORT STD.
ECRWSS
U.S. POSTAGE PAID
WILMETTE, IL 60091
PERMIT NO. 26

Local Postal Customer
Wilmette, IL 60091

Business Hours:

Monday – Friday
8:00 a.m. – 4:30 p.m.



Village Board Meetings

7:30 p.m. Village Hall

January 11, 25	April 12, 26	July 12, 26	October 11, 25
February 8, 22	May 10, 24	August 9, 23	November 8, 22
March 8, 22	June 14, 28	September 13, 28*	December 13, 27

*The 9/28/2022 meeting is on a Wednesday due to the Rosh Hashanah holiday.

Village Hall Closed

New Year's Day
Memorial Day
Independence Day
Labor Day
Thanksgiving
Day after Thanksgiving
Christmas Day

Fire/Police Emergency

911

Fire Department

fire@wilmette.com 847-251-1101

Museum

museum@wilmette.com 847-853-7666

Police Department

police@wilmette.com 847-256-1200

Public Works Department

pubworks@wilmette.com

General 847-853-7500

After Hours Emergency 847-256-1200

Water Management

847-853-7535

Village Hall

847-251-2700

Community Development 847-853-7550

Engineering 847-853-7660

Finance 847-853-7609

Clerk 847-853-7511

Village Manager

Michael Braiman braimanm@wilmette.com 847-853-7509

Other

Library
847-256-5025

Park District
847-256-6100

New Trier Township
847-446-8202

Waste Management
847-272-4145

AT&T
800-244-4444

Comcast
866-594-1234

Commonwealth Edison
888-334-7661

Nicor Gas
888-642-6748