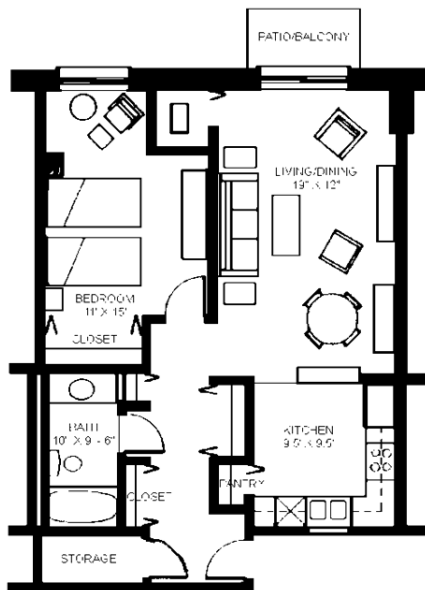


Village Green Atrium

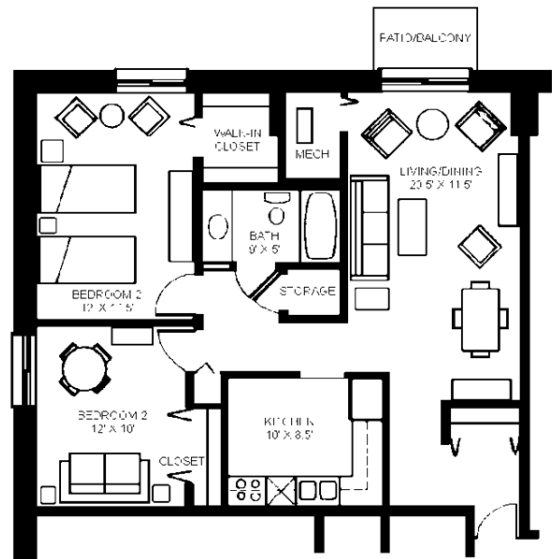
Formerly the site of the Curtis Curling Center, this structure was converted into a 35-unit condominium building for senior citizens in 1983. The building is unique for its architectural design which included a two-story atrium greenspace surrounded by condominium units on two floors. Kitchen windows have a view into the atrium, while balconies and exterior patios overlook Howard Park or Ridge Road.

This building contains 25 one-bedroom units and ten two-bedroom units. A typical one-bedroom unit is 780 square feet in size. A typical two-bedroom unit measures 980 square feet in size containing a 19' by 12' dining/living room; a 9.5' by 9.5' kitchen including refrigerator, electric range, dishwasher and garbage disposal; a 11' by 15' bedroom with large closets; a combination bath tub/shower; large walk-in closet, and an entry closet. The units also have an automatic sprinkler system and smoke detectors.

A typical two-bedroom unit is 980 square feet in size. Room sizes are approximately the same as in the one-bedroom units, with the addition of a second bedroom, 10' by 12' in size. Each unit is individually heated and air-conditioned. The units are typically carpeted throughout the dining/living room, bedroom, closets and entry areas. The units also have an automatic sprinkler system and smoke detectors.



TYPICAL ONE BEDROOM UNIT
780 sq. ft.



TYPICAL TWO BEDROOM UNIT
980 sq. ft.

There is a common laundry area, garbage and recycling area, a large handicapped accessible elevator, and security entrance system.

For more information about available units, contact your real estate professional.