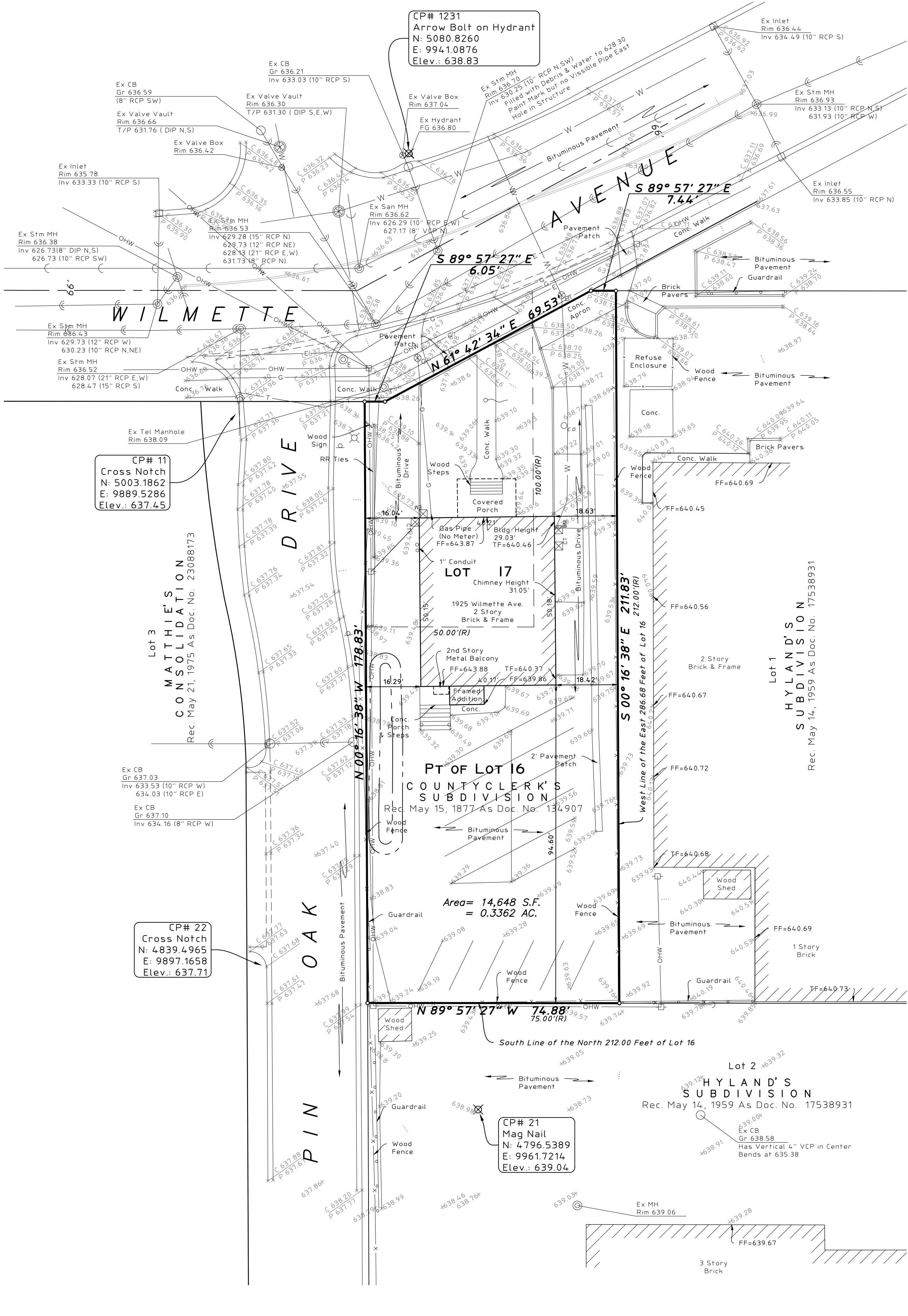


EXISTING CONDITIONS



CP# 1231
Arrow Bolt on Hydrant
N: 5080.8260
E: 994.10876
Elev.: 638.83

CP# 11
Cross Notch
N: 5003.1862
E: 9889.5286
Elev.: 637.45

CP# 22
Cross Notch
N: 4839.4965
E: 9897.1658
Elev.: 637.71

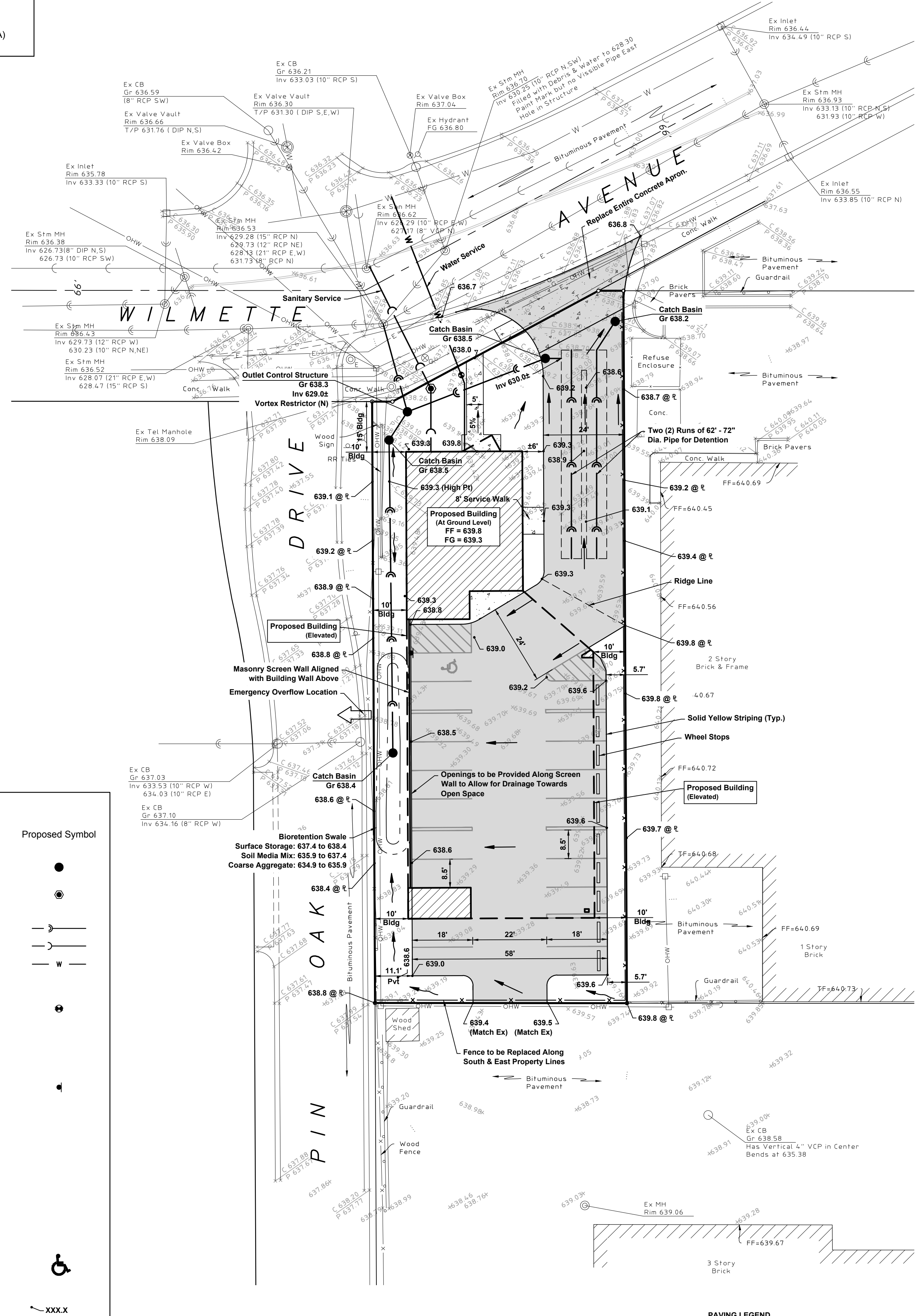
CP# 21
Mag Nail
N: 4796.5389
E: 9961.7214
Elev.: 639.04

EXISTING IMPERVIOUS AREA SUMMARY

BUILDING	=	2,073 sf
PAVEMENT	=	10,498 sf
TOTAL	=	12,571 sf
PARCEL AREA	=	14,648 sf
IMPERVIOUS COVERAGE	=	85.8%

Benchmark
Site Benchmark
CP # 11 (See Survey)
Description: Cross Notch
Elevation: 637.45 NAVD 88 (Geoid 12A)

PROPOSED CONDITIONS



PROPOSED IMPERVIOUS AREA SUMMARY

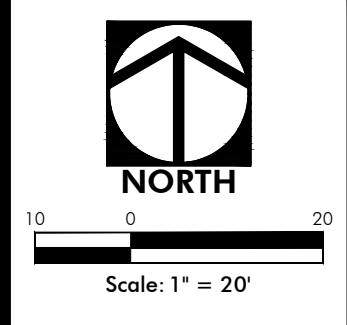
BUILDING FOOTPRINT	=	6,662 sf
PARKING / DRIVE AISLES	=	3,881 sf **
SIDEWALKS	=	222 sf
TOTAL	=	10,765 sf
PARCEL AREA	=	14,648 sf
IMPERVIOUS COVERAGE	=	73.5%

PAVING LEGEND

[Symbol]	Bituminous Pavement
[Symbol]	Concrete Apron
[Symbol]	Concrete Sidewalk
[Symbol]	Offsite Pavement (Resurface)

LEGEND

Existing Symbol	Description	Proposed Symbol
[Symbol]	Storm Sewer Manhole	[Symbol]
[Symbol]	Catch Basin	[Symbol]
[Symbol]	Inlet	[Symbol]
[Symbol]	Sanitary Sewer Manhole	[Symbol]
[Symbol]	Clean Out	[Symbol]
[Symbol]	Storm Sewer	[Symbol]
[Symbol]	Sanitary Sewer	[Symbol]
[Symbol]	Water Main	[Symbol]
[Symbol]	Fire Hydrant	[Symbol]
[Symbol]	Valve Vault	[Symbol]
[Symbol]	Valve Box	[Symbol]
[Symbol]	B-Box	[Symbol]
[Symbol]	Light Pole	[Symbol]
[Symbol]	Hand Hole	[Symbol]
[Symbol]	Fence	[Symbol]
[Symbol]	Sign	[Symbol]
[Symbol]	Gas Valve	[Symbol]
[Symbol]	Gas Line	[Symbol]
[Symbol]	Electric Line	[Symbol]
[Symbol]	Overhead Utility Line	[Symbol]
[Symbol]	Electrical Pedestal	[Symbol]
[Symbol]	Electric Manhole	[Symbol]
[Symbol]	Guy Wire	[Symbol]
[Symbol]	Utility Pole	[Symbol]
[Symbol]	Telephone Pedestal	[Symbol]
[Symbol]	Telephone Manhole	[Symbol]
[Symbol]	Telephone Line	[Symbol]
[Symbol]	Flagpole	[Symbol]
[Symbol]	Handicapped Parking Stall	[Symbol]
[Symbol]	Spot Elevation	[Symbol]
[Symbol]	Spot Elevation @ Prop. Line	[Symbol]
[Symbol]	Open Lid Frame & Grate	[Symbol]
[Symbol]	Closed Lid Frame & Lid	[Symbol]
[Symbol]	Dimension to Building	[Symbol]
[Symbol]	Dimension to Pavement	[Symbol]
[Symbol]	Hardscape Flow	[Symbol]
[Symbol]	Softscape Flow	[Symbol]
[Symbol]	Contour Line	[Symbol]



Revised by: [Name], Stormwater Management
Site Plan Revisions
Site Plan Revisions
Removed Ingress-Egress Easement from Existing Conditions

Date	Revision
01/10/2018	1
02/23/2017	2
10/10/2016	3
10/12/2015	4

HAEGER ENGINEERING
consulting engineers • land surveyors
1304 N. Plum Grove Road, Schaumburg, IL 60173 • Tel: 847.394.6600 Fax: 847.394.6608
Illinois Professional Design Firm License No. 184-003152
www.haegerengineering.com

CONCEPT ENGINEERING PLAN
CLELAND PLACE
1925 WILMETTE AVENUE
WILMETTE, ILLINOIS

Project Manager: M.L.A.
Engineer: J.A.C.
Date: 09/11/2015
Project No.: 15-123
Sheet: 1