

**NOTES:**

**WITH TRENCH**

1. FILTER BARRIERS SHALL BE PLACED AT THOSE LOCATIONS SHOWN ON THE PLANS INCLUDING STOCK PILE AREAS AND WHERE INDICATED BY THE VILLAGE ENGINEERING DEPARTMENT.
2. ATTACH FABRIC TO WIRE MESH WITH HOG RINGS, TO WOOD POSTS WITH NAILS, AND TO STEEL POSTS WITH TIE-WIRES AT TOP AND MID-SECTION.
3. OVERLAP FILTER FABRIC BY 6" AND FOLD AROUND EACH POST ONE FULL TURN WHERE 2 SECTIONS ADJOIN.
4. DRIVE POSTS TIGHTLY TOGETHER AND SECURE TOPS OF POSTS BY TYING OFF WITH CORD OR WIRE TO PREVENT FLOW-THROUGH OF BUILT-UP SEDIMENT AT JOINT.
5. INSPECTION OF SILT FENCES SHALL BE AT LEAST ONCE PER WEEK AND AFTER RAIN EVENTS IN EXCESS OF 1/2". REPAIR OR REPLACEMENT SHALL BE MADE PROMPTLY AS NEEDED.
6. SEDIMENT TRAPPED BY THE FENCE SHALL BE REMOVED (AND PROMPTLY DISPOSED OF) WHENEVER SIGNIFICANT ACCUMULATION OCCURS.
7. BARRIERS SHALL BE MAINTAINED IN PLACE UNTIL COMPLETION OF CONSTRUCTION AND THE UPSLOPE AREA HAS BEEN STABILIZED, AND SHALL BE REMOVED ONLY WHEN DIRECTED BY VILLAGE ENGINEERING.

**WITHOUT TRENCH**

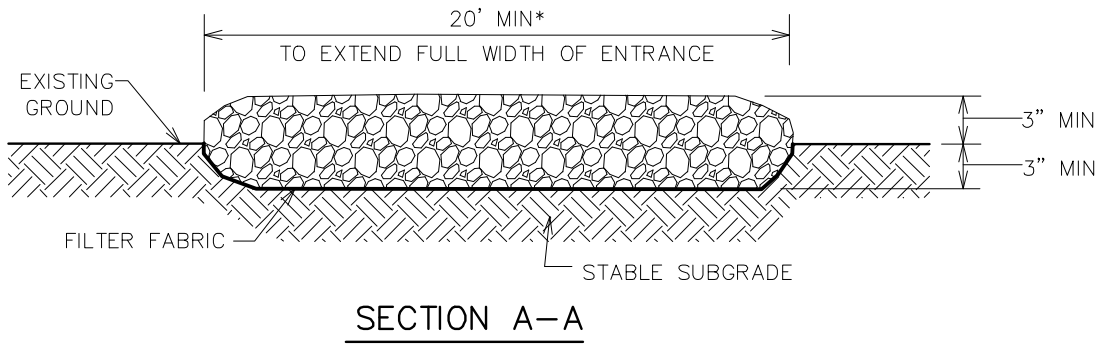
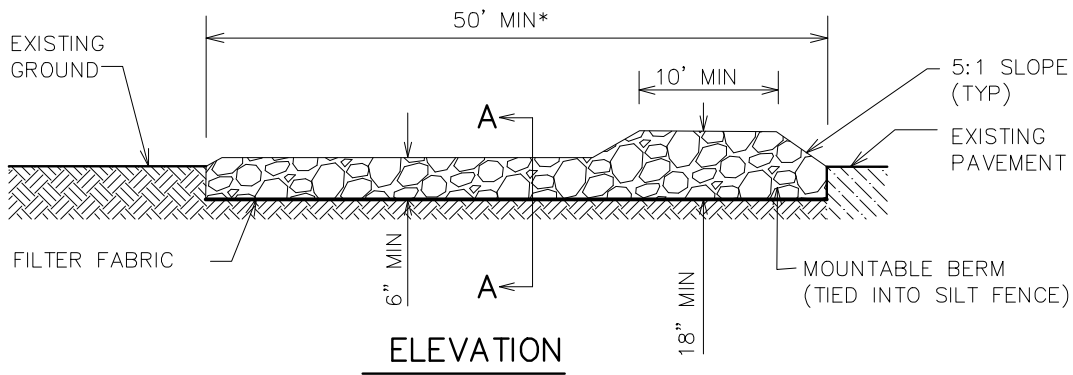
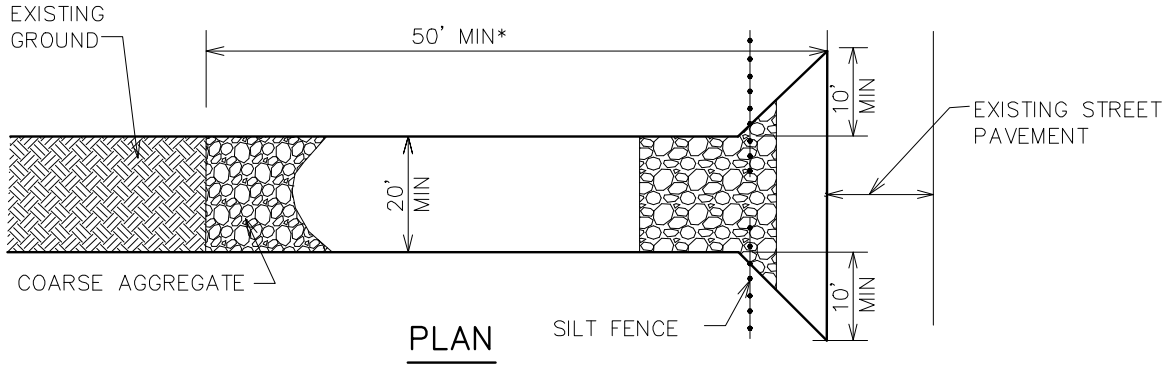
1. TOE-IN CAN ALSO BE ACCOMPLISHED BY LAYING THE FABRIC FLAP ON UNTRENCHED GROUND AND PILING AND TAMPING SOIL OVER THE FLAP AT THE BASE OF STRUCTURE.

NOT TO SCALE

**SILT FENCE**

Village of Wilmette  
 Engineering Department  
 847.853.7660

REVISED: 01-19-10



**NOTES:**

1. GEOTEXTILE FILTER FABRIC SHALL BE PLACED OVER THE CLEARED AREA PRIOR TO PLACING COARSE AGGREGATE
2. COARSE AGGREGATE (OR CRUSHED CONCRETE) SHALL MEET IDOT GRADATION FOR CA-1 CRUSHED AGGREGATE.
3. STABILIZED CONSTRUCTION ENTRANCE SHALL BE INSTALLED, PRIOR TO ONSET OF CONSTRUCTION OPERATIONS AND SHALL BE MAINTAINED THROUGHOUT THE PROJECT.
4. CONSTRUCTION ENTRANCE SHALL BE REMOVED UPON COMPLETION OF CONSTRUCTION AND ONLY WHEN DIRECTED BY VILLAGE ENGINEER.

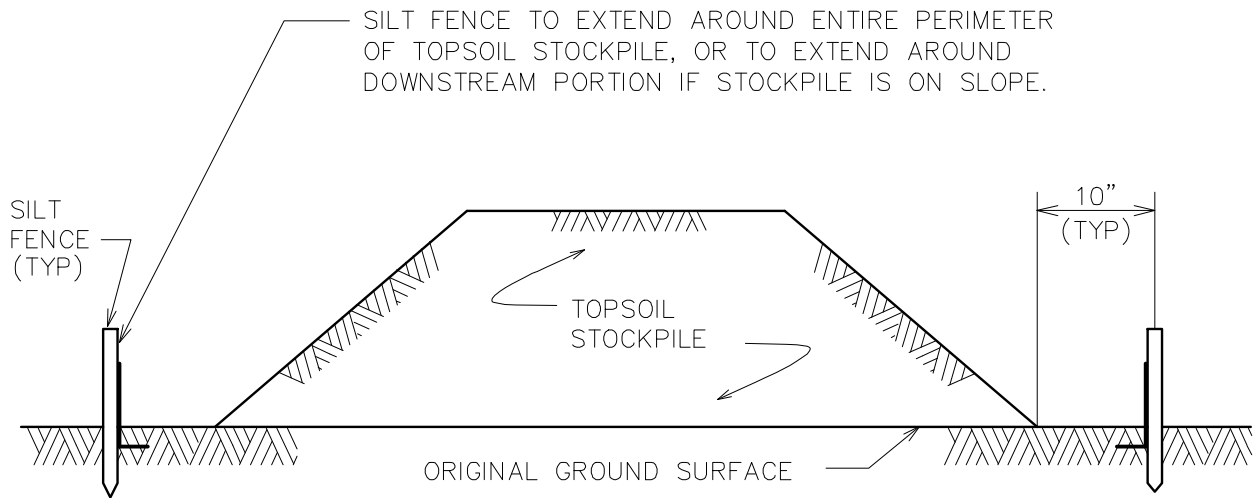
\* OR TO BUILDING LINE

NOT TO SCALE

**CONSTRUCTION ENTRANCE  
PRIVATE DEVELOPMENT**

Village of Wilmette  
Engineering Department  
847.853.7660

REVISED: 01-03-08



### NOTES:

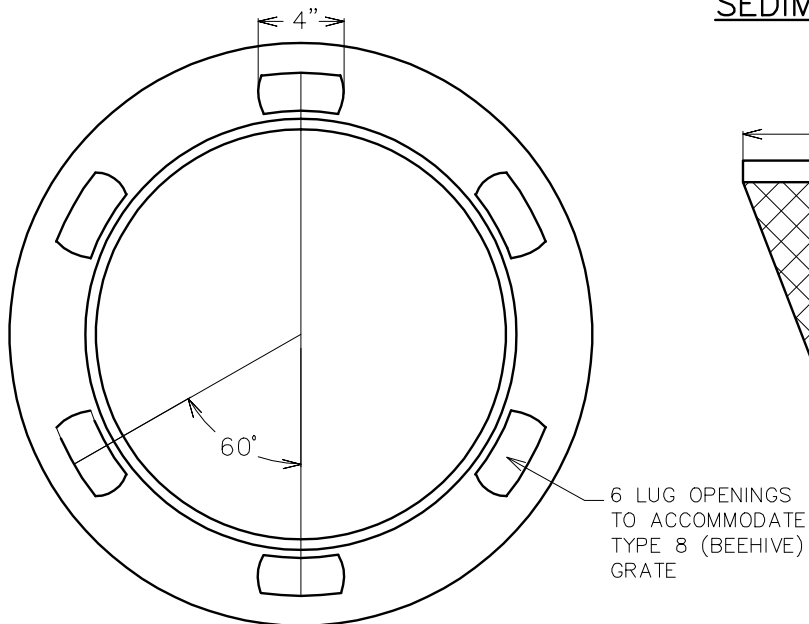
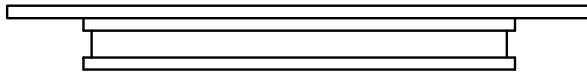
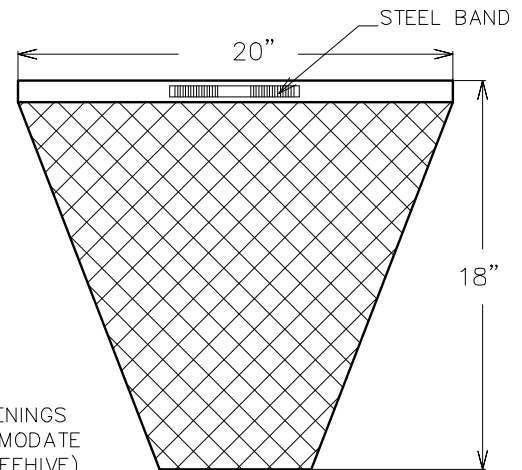
1. AN ON-SITE DRAINAGE SWALE SHALL BE LOCATED BETWEEN THE TOPSOIL STOCKPILE AND OFF-SITE PROPERTY.
2. REFERENCE IS MADE TO THE SILT FENCE DETAIL (ER-3) FOR MATERIALS AND INSTALLATION METHODS.
3. IF THE STOCKPILE IS TO REMAIN FOR MORE THAN 14 DAYS, IT SHALL BE STABILIZED WITH BURLAP MATTING OR SEEDED TO MINIMIZE EROSION.
4. INSPECTION OF SILT FENCES SHALL BE AT LEAST ONCE PER WEEK AND AFTER RAIN EVENTS IN EXCESS OF  $\frac{1}{2}$ ". REPAIR OR REPLACEMENT SHALL BE MADE PROMPTLY AS NEEDED.
5. SEDIMENT TRAPPED BY THE FENCE SHALL BE REMOVED AND PROPERLY DISPOSED OF WHENEVER SIGNIFICANT ACCUMULATION OCCURS.
6. THE SILT FENCE SHALL BE MAINTAINED IN PLACE UNTIL TOPSOIL STOCKPILE HAS BEEN ELIMINATED AND SHALL BE REMOVED ONLY WHEN DIRECTED BY VILLAGE ENGINEER.

NOT TO SCALE

## TEMPORARY TOPSOIL STOCKPILE PROTECTION

Village of Wilmette  
Engineering Department  
847.853.7660

REVISED: 01-03-08

FRAME — PLAN VIEWSEDIMENT BAG — SECTIONFRAME — SECTIONGENERAL NOTES:

## FRAME:

TOP FLANGE FABRICATED FROM  $\frac{1}{8}$ " FLAT STOCK. BASE RIM FABRICATED FROM  $1\frac{1}{2}$ "X $\frac{1}{2}$ "X $\frac{1}{8}$ " CHANNEL. ALL STEEL CONFORMING TO ASTM-A36.

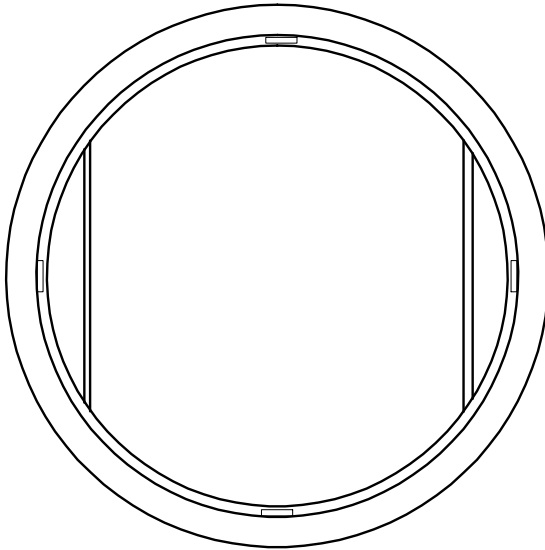
## SEDIMENT BAG:

BAG FABRICATED FROM 4 OZ./ SQ.YD. NON-WOVEN POLYPROPYLENE GEOTEXTILE REINFORCED WITH POLYESTER MESH. BAG SECURED TO BASE RIM WITH A STAINLESS STEEL STRAP AND LOCK.

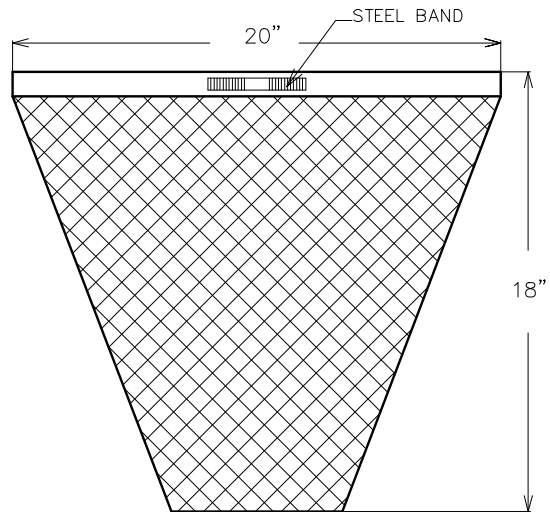
NOT TO SCALE

### FILTER FOR BEEHIVE GRATE (TYPE 8)

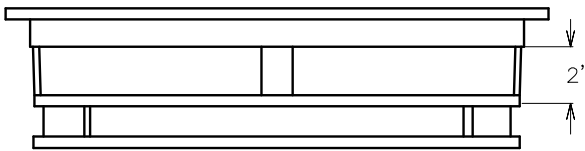
Village of Wilmette  
Engineering Department  
847.853.7660



FRAME – PLAN VIEW



SEDIMENT BAG – SECTION



FRAME – SECTION

**GENERAL NOTES:**

1. FRAME: TOP FLANGE FABRICATED FROM  $1\frac{1}{4}$ "X $1\frac{1}{4}$ "X $\frac{1}{8}$ " ANGLE. BASE RIM FABRICATED FROM  $1\frac{1}{2}$ "X $\frac{1}{2}$ "X $\frac{1}{8}$ " CHANNEL. HANDLES AND SUSPENSION BRACKETS FABRICATED FROM  $1\frac{1}{4}$ "X $\frac{1}{4}$ " FLAT STOCK. ALL STEEL CONFORMING TO ASTM-A36.
2. SEDIMENT BAG: BAG FABRICATED FROM 4 OZ./ SQ.YD. NON-WOVEN POLYPROPYLENE GEOTEXTILE REINFORCED WITH POLYESTER MESH. BAG SECURED TO BASE RIM WITH A STAINLESS STEEL STRAP AND LOCK.
3. FILTER FOR OTHER SHAPE GRATES SHALL BE APPROVED IN ADVANCE OF PLACEMENT BY VILLAGE ENGINEER.

NOT TO SCALE

**FILTER FOR ROUND OPEN  
(TYPE 1) GRATE & FRAME**

Village of Wilmette  
Engineering Department  
847.853.7660

REVISED: 01-04-08