

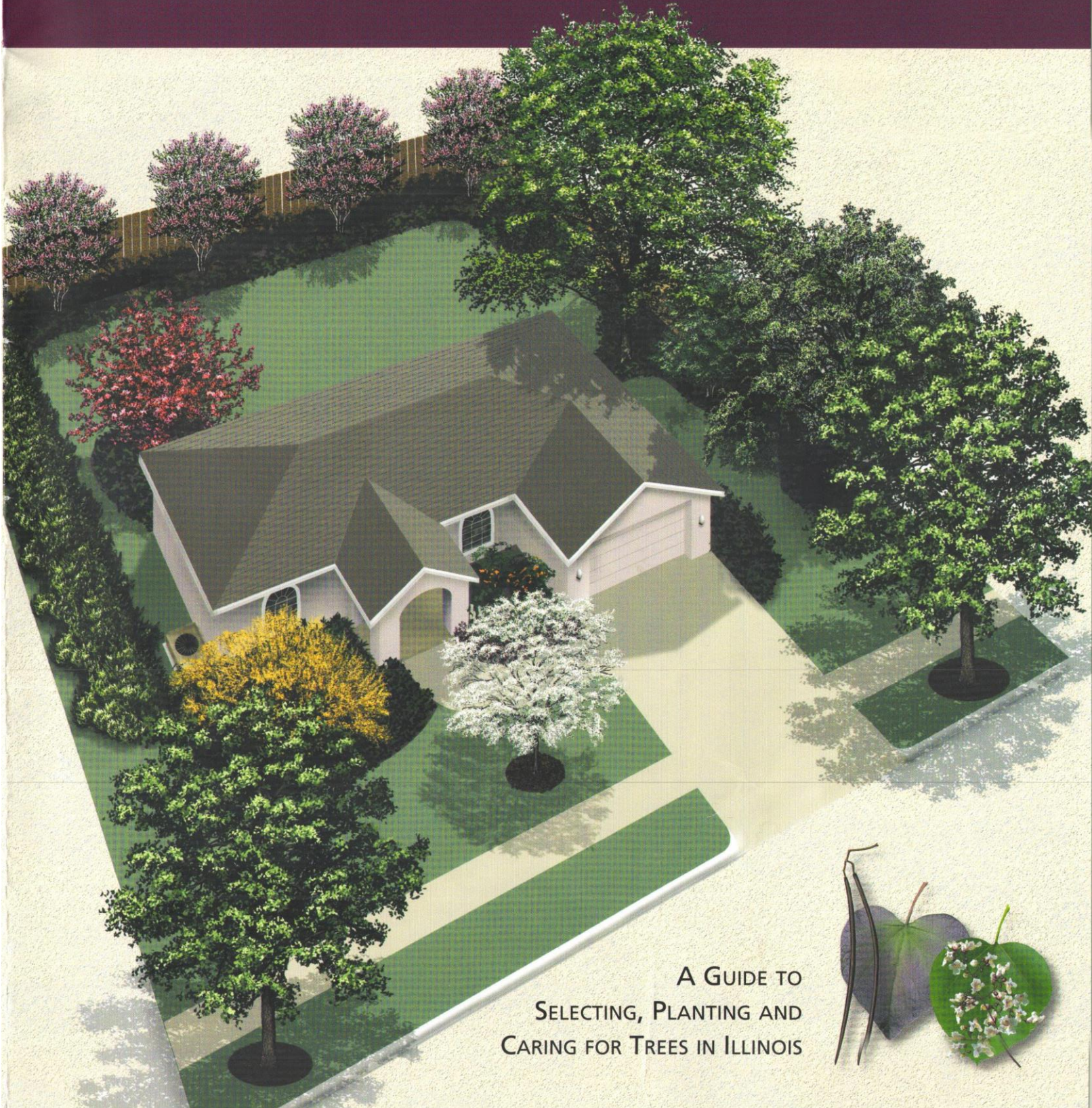
Third Edition

Updated tree recommendations and up-and-coming selections

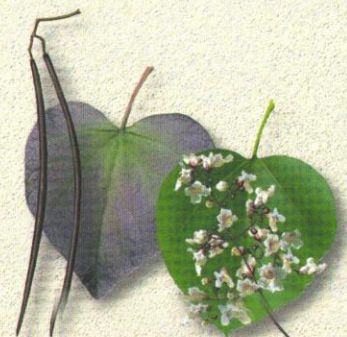


UNDER THE CANOPY

CREATING PERSONAL GREENSPACE



A GUIDE TO
SELECTING, PLANTING AND
CARING FOR TREES IN ILLINOIS



How to Select a Tree



A high-quality tree has:

- a root ball with a diameter equal to or exceeding a ratio of 12" for each inch of diameter at the base of the trunk (caliper).
- a single leader or central trunk or well-spaced, multi-stemmed trunk that does not show signs of crowding or stem squeeze.
- a trunk free of mechanical wounds and wounds from incorrect pruning.
- a strong form with well-spaced, firmly attached branches along the upper two-thirds of the trunk.
- leaves with good color and no obvious insect or disease damage.



A low-quality tree has:

- crushed or circling roots in a small root ball or small container.
- a trunk with wounds from mechanical impacts or incorrect pruning.
- a weak form in which multiple stems squeeze against each other or branches squeeze against the trunk.
- undersized or discolored leaves.

TIP

Smaller trees establish more quickly and grow faster because fewer roots are lost in transplanting.

Up-and-coming Selections

The following trees have been identified by the *Under The Canopy* Editing Team as soon-to-be-popular trees with desirable features for urban settings:

Skinny Latte™ Kentucky Coffee Tree
Gymnocladus dioica 'Morton' Skinny Latte™

Mercury® Magnolia
Magnolia 'NCMX1' Mercury®

Pink Cascade® Cherry
Prunus 'NCPH1' Pink Cascade®

Wisconsin Red™ Musclewood
Carpinus caroliniana 'My Select Strain' Wisconsin Red™

Tupelo Tower™ Blackgum
Nyssa sylvatica 'WFH1' Tupelo Tower™

Ivory Spear™ and Raspberry Spear™ Crabapple
Malus 'JFS KW214MX' Ivory Spear™ and
Malus 'JFS KW213MX' Raspberry Spear™

Northern Tribute® River Birch
Betula nigra 'Dickinson' Northern Tribute®

Northern Spotlight® Korean Maple
Acer pseudosieboldianum 'Kordak' Northern Spotlight®

Royal Splendor® Norway Spruce
Picea abies 'Noel' Royal Splendor®

Sponsors



Illinois Forestry
Development
Council



ILLINOIS
Extension
COLLEGE OF AGRICULTURAL, CONSUMER
& ENVIRONMENTAL SCIENCES

Funding for the printing of this publication is provided by the USDA Forest Service Urban and Community Forestry program through their core grant to the Illinois Department of Natural Resources State Urban and Community Forestry Program. This institution is an equal opportunity provider.

Editing Team

Reinee Hildebrandt and Jim Tresouthick, Illinois Department of Natural Resources; Bob Benjamin, APHIS USDA; Kim Shearer, Joe Rothleutner and Edith Makra, The Morton Arboretum; Jay Hayek, Illinois Forestry Development Council; Kari Houle, University of Illinois Extension; Bob Brooks, City of Bloomington; Jeffrey Dawson, University of Illinois; Mike Dirksen, City of Springfield; Thomas Green, Western Illinois University; Tim Howe, City of Macomb; Fredric Miller, Joliet Junior College; Bill Mitchell, City of Belleville; John Groninger, Southern Illinois University; Tim Tokarz, Village of Addison; Bill Vander Weit, City of Champaign

Thank you, Reinee Hildebrandt, for your dedication to Illinois communities and trees!

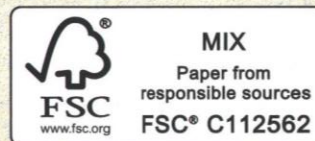
Editor/Project Manager: Michael Brunk, City of Urbana underthecanopy@urbanainllinois.us
Marketing/Graphic Design: Woolard Marketing Consultants, Inc.

Illustrations by Andrew Recher: American Basswood, Early Glow™ Buckeye, Exclamation!®

London Plane Tree, Fox Valley® River Birch, Frontier Elm, Pawpaw, Purple Catalpa,

The Rising Sun™ Redbud and Triumph™ Elm

Other Illustrations: ©2004 Robert O'Brien



Planning Your Landscape

What a difference trees make in our communities! Stately and beautiful sentries, they clean our air and provide shady respite for our homes and outdoor family activities while inviting songbirds into our yards and gardens.

Working together, we can maximize the benefits trees provide to you and your community. This guide will assist you in planning your landscape, planting new trees and providing our leafy friends with proper care and maintenance. Please recycle this brochure by sharing it with a friend.

In Your Planning, Consider:

Season: For best results, plant trees from mid-March through May or from mid-September through November. Spring-dug trees can be planted from June to early September, but require a more attentive watering program. Attentive watering also helps conifers transplant well in mid-summer, but only after new growth is complete.

Site: Soil conditions dictate how well or poorly your tree will grow. Compacted clay—common in newer subdivisions—can limit proper drainage. Sandy soils or those on a slope may drain more quickly and require a more drought-tolerant species. Low areas that are often wet may require a tree tolerant to flooding or wet soil conditions. In addition, consider the amount of sunlight needed and tolerance to extremely hot or cold temperatures.

Space: Give your tree sufficient room to grow, both above the ground for canopy and below the ground for its root system. Consider proximity to buildings, driveways, sidewalks, pools, patios, and overhead, underground, and ground-level utilities.

Selection: Once you have determined your purpose, planting site and space requirements, use the tree species selection guide for urban trees recommended by local arborists. By carefully selecting the right tree for your location, you can avoid the need for fertilization, which is a major source of water pollution.

Have a Purpose

- Create a privacy buffer or winter wind-break. Dense evergreens north and northwest of a home block winter winds.
- Cool your home and conserve energy by shading roof, walls, patios, driveways and air conditioning unit. Deciduous trees on the east, southeast, west and southwest sides of homes provide cooling summer shade and allow warming winter sun.
- Preserve special views from within your home.
- Attract birds and other wildlife.
- Beautify your property.

Right Tree/Right Place Checklist

Soil

Most new subdivision soils have been disturbed and are poorly drained clay.

- | | |
|---|--------------------------------|
| <input type="checkbox"/> Well drained/Dry | <input type="checkbox"/> Sandy |
| <input type="checkbox"/> Poorly drained/Wet | <input type="checkbox"/> Loam |
| <input type="checkbox"/> Shallow soil depth | <input type="checkbox"/> Clay |

Space

Consider the mature height and spread of the tree.

- | | |
|---|--|
| <input type="checkbox"/> Open space | <input type="checkbox"/> Adjacent building |
| <input type="checkbox"/> Important views | <input type="checkbox"/> Other landscaping/trees |
| <input type="checkbox"/> Overhead and underground utilities | |
| <input type="checkbox"/> Road signs or streetlights | |

Sunlight

Most trees require partial to full sun.

- | | |
|-------------------------------------|---|
| <input type="checkbox"/> Full sun | <input type="checkbox"/> Partial sunlight |
| <input type="checkbox"/> Full shade | |

Characteristics

Unique attributes of trees can be attractive in all seasons.

- | | |
|---|--|
| <input type="checkbox"/> Flowering | <input type="checkbox"/> Fall leaf color |
| <input type="checkbox"/> Fruiting | <input type="checkbox"/> Unique shape |
| <input type="checkbox"/> Bark texture and color | |

Types of Trees

Only evergreen trees hold foliage throughout winter.

- | | |
|------------------------------------|------------------------------------|
| <input type="checkbox"/> Deciduous | <input type="checkbox"/> Evergreen |
|------------------------------------|------------------------------------|

Special Situations

You may have additional site considerations.

- ☐ Salt burn from street and sidewalk de-icers
- ☐ Root space restrictions
- ☐ Disturbed soils from construction
- ☐ Future landscape or hardscape development

Trees near utility lines should be no taller than 20 feet at mature size.

Large shade trees generally should be planted at least 30 feet from overhead utility lines.

If an existing tree is too close to a building, consult a Certified Arborist before considering removal. A healthy, well-maintained tree can functionally coexist within close proximity to buildings.

Small trees are best suited close to house, but should be spaced at least 10 feet from house.

Medium to large trees should be located 20 to 25 feet from buildings.

Maintain a plant-free zone for unobstructed visibility.

Plant private trees at least 5 feet from public sidewalks.

Hardest trees belong on parkway.

TIP

In areas of new home construction, it's best to establish lawns before planting trees since irrigating new turf can easily over-water newly planted trees. Plan to plant new trees the year following a new lawn.

Proper Tree Spacing

Above-ground space for canopy
Small trees = 20 feet minimum
Medium trees = 30 feet minimum
Large trees = 40 feet minimum

Below-ground space for roots (minimum 2-foot soil depth)
Small trees = 100 to 200 square feet
Medium trees = 150 to 300 square feet
Large trees = 200 to 400 square feet



Always Avoid:

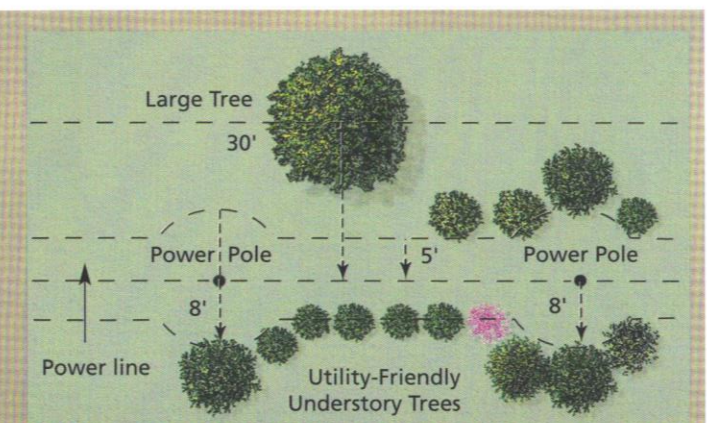
- blocking traffic signs, fire hydrants, views of oncoming traffic, pedestrian crosswalks and desirable night lighting. City ordinances may require planting permits and dictate corner planting setbacks.
- planting too close to sidewalks, foundations or other pavement areas.
- planting trees or shrubs around underground utilities.
- planting flowers in root areas of young trees.
- planting trees too close together. Allow room for mature spread of each adjacent tree.
- blocking desirable views from within a home or frequented area of the yard.
- shading gardens.
- encroaching on neighbor's gardens or yard space without consultation.
- planting too many of the same species.
- planting evergreen trees on parkways.

Planting Near Utility Lines

Plant only utility-friendly trees (mature height of 20 feet or less) within 15 feet of utility lines; no closer than 8 feet to power poles; and 5 feet from center of utility easement when access to utility is limited.

Some narrow-shaped trees may be able to survive closer than 30 feet to utility lines without creating a conflict, but in no case should trees expected to grow as tall or taller than utility lines be planted closer than a distance equal to one-half their mature spread.

Suggested tree setbacks from power lines are for typical overhead residential distribution lines and do not apply to high-voltage transmission rights-of-way.



Best Way to Plant a Tree

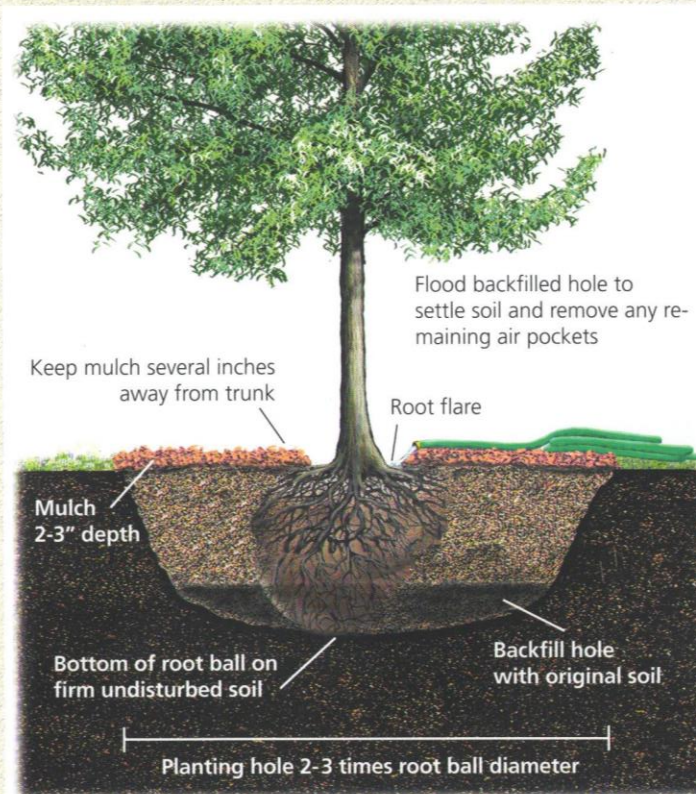
1. Call JULIE before you dig! Illinois law requires calling for underground utility locations at least two working days before digging. The number is 800-892-0123 and the service is free. Residents within the city limits of Chicago must call DIGGER at 312-744-7000.

2. Dig a hole that is at least 2 times wider than the root ball (3 times wider in compacted soil). For depth of hole, you will need to vertically measure a firm root ball. If it is not solid and moist, water root ball and let sit overnight. Next, measure from bottom of root ball to root flare (the point where the top-most root in the root ball originates from the trunk). You may need to scrape off excess soil to expose the root flare. The depth of the hole should be equal to or slightly less than this distance. The bottom of the root ball should sit on undisturbed soil. The top-most structural root should be 1 - 3 inches below the soil surface when measured at 4 inches from trunk. It is better to plant trees up to 3 inches shallow rather than too deep, especially in poorly-draining clay soils.

3. Carefully roll or lift tree into planting hole. Small container trees can be carefully removed from container and placed into hole. Circling roots, if present, should be straightened or trimmed. Balled and burlap trees should be left intact. Broken or damaged roots frequently result in the loss of newly-planted trees, so always lift trees by the root mass and never by the trunk. If tree is too heavy to lift, dig a ramp into planting hole and slowly roll it in.

4. Straighten and secure tree. Look at tree from two different angles, carefully adjusting tree so trunk is true vertical. Check both angles of view a second time, then secure tree by compacting soil with foot pressure around bottom third of root ball.

5. Cut away all burlap and twine above the bottom third of the root ball. If wire basket exists, cut top one or two rings of wire off and remove from hole. Never leave burlap, twine or wire material in hole, as these will create air gaps.



6. Break up soil into small pebble-sized particles. Fill remainder of hole, lightly tamping every 4 to 6 inches. Amend backfill with 25% compost if soil has high clay content. Do not over compact the backfill, as soil needs to remain loose enough for good root development.

7. Settle backfill by thoroughly watering tree immediately after planting to settle soil. Be attentive, as the first watering is the time a tree may lean to one side, especially if root ball was loose or sandy. If that happens, tenderly pull tree back to straight position. Add more soil if settling occurs.

8. Stake tree only when necessary. Staking is not recommended except in sit-

uations where the tree will not be able to stand on its own, such as in sandy soils or windy locations. If staking is used, make sure ties around tree are rubber cords/tubing or flat straps to avoid girdling as the tree grows. *Wire and garden hose combinations are not good.* Do not stake so tightly as to restrict trunk movement. All staking should be removed after one year so tree can naturally strengthen with wind movement.

9. Create a 2-inch to 3-inch thick mulch bed so the root ball has good air exchange and water access. Mulch an area around the base of the tree equal to 3 feet per inch of trunk diameter (2" tree = 6 foot diameter mulch area). If space is restricted, mulch as large an area as possible to limit turf and weed competition and retain moisture. Properly mulched trees can grow up to three times as fast as trees that have turf, flowers or weeds within the recommended mulch area. Don't overdo the amount of mulch; too much can suffocate a tree.

10. Inspect and water your new tree. It is important to keep the root ball moist but not saturated with light, frequent watering for the first two years of establishment.

Care and Pruning

Year Round Care

Spring

- Tree planting is good March through May.
- Replenish mulch to a depth of no more than 2 to 3 inches.

Summer

- Prune spring flowering trees and shrubs.
- New trees may need small amounts of water (1 gallon per trunk inch) every 3 to 5 days during July and August.
- Established trees need a thorough watering twice a month during dry periods.
- Do not overwater! Excessive turf irrigation or tree watering can cause foliar diseases and drown trees.
- Inspect trees regularly for insect, disease or mechanical damage.
- Conifers can be transplanted after new growth is complete.

Fall

- Tree planting is good September through November.
- Select tree species that are adaptable to fall season planting.
- Water trees beyond leaf drop, if soil becomes dry, until freezing temperatures arrive.

Winter

- Inspect trees for branch and structural problems.
- Most trees can be pruned, except for spring blooming trees.
- Water evergreens when winter temperatures warm to above freezing.
- Develop landscape designs and tree locations.

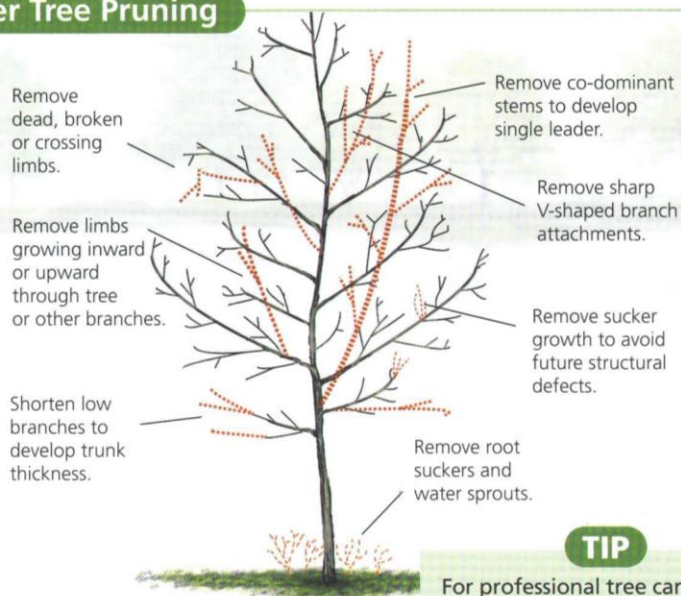
How Much To Water



The amount of water given to newly-planted trees should be carefully measured by slowly applying 1 gallon of water for each diameter inch of trunk every 4 to 5 days when there has been less than half an inch of rain during that week. Hot, dry periods, sandy soils or Southern climates may require watering as often as every 3 days to keep soil sufficiently moist. Containerized trees grown in bark mix readily dry out and may require frequent light waterings throughout the week during summer months. Otherwise, do not water trees daily or drown young trees with long soakings or turf irrigation.

Proper Tree Pruning

- Limit pruning to dead or broken limbs for the first three years since foliage helps regenerate the root system.
- Wound dressing is not necessary.
- All pruning should be done at bud or branch junctions.
- Never prune any tree close to electrical lines.
- Always maintain the upper two-thirds of the tree in branches and foliage whenever possible.
- Never remove more than 25% of the tree's foliage in one season.
- Never top a tree, leave a stub or remove the branch collar by a flush cut.
- Always disinfect pruning tools with rubbing alcohol, Lysol® or Listerine® between trees (or between cuts on infected trees) to prevent the spread of disease.

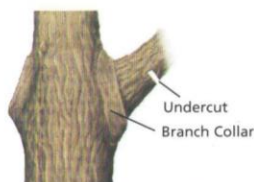


TIP

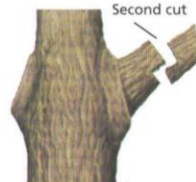
For professional tree care advice, find a Certified Arborist at illinoisarborist.org.

Three-Step Approach for a Proper Pruning Cut

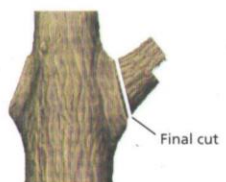
1. Undercut 12-24" up from the branch collar. This stops the bark from tearing.



2. Make the second cut from the top all the way through the branch, directly above or just outside cut #1.



3. The final cut should be just beyond the branch collar. Support the stub so it does not tear the bark.



Tree Species Selection Guide for Illinois

These trees are just a start. There is an abundance of tree species, many native to Illinois, suitable for planting in urban and rural landscapes. See your local nursery or tree specialist for guidance.

	Common Scientific Name	At Maturity		Growth Rate*	Preferred Planting Season	Desirable Features	Adaptability	Considerations
		Height	Spread					
SMALL TREES	Allegheny Serviceberry <i>Amelanchier laevis</i> (N)	20'-30'	15'-20'	Medium	Spring/Fall	Profuse, white, fragrant flowers in spring. Edible fruit. Yellow/orange/red fall color.	Shade tolerant but also thrives in full sun. Drought sensitive. Prefers well drained, moist, acid soil.	Attractive all-season tree with multiple stems and rounded crown. Not a good choice for new subdivisions as it is not a reliable grower under high stress conditions.
	Blackhaw Viburnum <i>Viburnum prunifolium</i> (N)	10'-15'	10'-15'	Slow-Medium	Spring/Fall	Creamy white flowers in spring. Reddish-purple fall color. Edible fruit used to make preserves.	Adaptable to many soils, including dry conditions. Easily transplanted. Sun or shade.	Interesting small specimen tree or multi-stemmed shrub with horizontal branching. Fruit makes it best to locate away from sidewalks, driveways and parking lots. Prone to suckering.
	Cornelian Cherry Dogwood <i>Cornus mas</i>	15'-20'	15'-20'	Slow	Spring	One of the first trees to bloom in spring with clusters of bright yellow flowers. Fruit brilliant red. Attractive winter bark. Very pest-free plant.	Adapts to most soil types and pH levels. Full sun to part shade. Young trees easily transplanted.	Very pest-free plant. One of the most durable Dogwoods for Midwestern conditions.
	Fox Valley® River Birch <i>Betula nigra</i> 'Little King' (N)	8'-10'	10'-15'	Medium	Spring/Fall	Exfoliating bark with pale salmon and cinnamon-red on trunks and main branches that shows at a young age. Bright green foliage with sheen. Excellent resistance to bronze birch borer.	Easily transplanted. Adapts well to most soil types and growing conditions. Heat and drought tolerant.	Wonderful alternative to other small ornamental trees. Neat, compact, low-branching habit is unique for species and perfect for limited space applications. A unique dwarf selection of a native Illinois tree.
	Pawpaw ▲ <i>Asimina triloba</i> (N)	15'-25'	15'-20'	Slow-Medium	Spring	Brilliant yellow fall color. Edible and showy fruit. Subtle 1-2" dark red-purple flowers mature as leaves emerge.	Prefers shade and moist, but well-drained, loamy soil. Is sensitive to salt and drought; does not tolerate compacted or clay soils.	Naturally grows in low bottom woods and along streams. Can spread and form colonies in unmaintained natural habitats.
	The Rising Sun™ Redbud <i>Cercis canadensis</i> 'JN2' 'The Rising Sun' (N)	12'-15'	12'-15'	Medium	Spring/Fall	Small tree with full shape whose rosy-orchid, sweet pea-like flowers appear before spring foliage. The newly emerging tangerine and peach colored leaves are an attractive feature through spring and summer.	New tree introduced in 2010 that is reported to be drought resistant and cold hardy to zone 5. Adaptable to full sun or partial shade and many soil types.	The Rising Sun™ is perfect for smaller spaces and in-town neighborhoods as well as for specimen and accent plantings. A discovered selection of redbud featuring colorful changing leaves.
	Sweetbay Magnolia <i>Magnolia virginiana</i>	10'-20'	10'-20'	Medium	Spring	Cream-colored, lemon-scented flowers in late spring. Glossy green foliage that flashes its silvery white underside in the breeze. Dark red fruit.	Best planted in protected locations in the northern part of the state. Requires acid soil. Tolerates wet conditions and shade. For a large Magnolia, try Cucumber Magnolia—cold hardy throughout IL.	Illinois cultivars to choose from: 'Mayer', introduction from Urbana IL, JC McDaniel; 'Moonglow', from Jacksonville IL, Earl Cully; 'Havener', from Mt. Pulaski IL, JC McDaniel
MEDIUM TREES	White Fringe Tree <i>Chionanthus virginicus</i>	12'-20'	12'-20'	Slow	Spring/Fall	Drooping clusters of white, fragrant flowers with long fringe-like petals in June just as leaves are filling in. Dark blue fruit.	Likes full sun and moist, acid soil. Very tolerant of urban conditions.	Outstanding flowering tree/shrub that will draw attention. Rarely requires pruning. Flowers at an early age. Fruit relished by birds.
	American Hophornbeam <i>Ostrya virginiana</i> (N)	30'-40'	20'-30'	Slow	Spring	Unusual ornamental fruit that resemble hops. Interesting shredding-like bark.	Very sensitive to salt. Intolerant of severe urban stresses. Partial shade or full sun. Recovers slowly from transplanting.	Attractive small to medium-sized, understory tree with horizontal or drooping branches. Best suited for wide parkway or sufficient open space to allow horizontal branching to stretch out.
	American Hornbeam <i>Carpinus caroliniana</i> (N)	20'-35'	20'-35'	Slow	Spring	Yellow/orange/red fall color. Irregularly fluted smooth gray bark is similar in appearance to a muscular arm hence its nickname muscledwood.	Somewhat difficult to transplant and prefers late winter/early spring planting. Tolerates heavy shade and periodic flooding. Adaptable to clay soils.	Well suited for small spaces on shady suburban or rural sites. Often multi-trunked.
	American Smoke Tree <i>Cotinus obovatus</i>	20'-35'	10'-20'	Medium	Spring/Fall	Plume-like flowers create smoke-like effect. Yellow/amber to red/purple fall color.	Well-adapted to limestone soils but can tolerate a wide variety of soils and pH ranges. Sunny location preferred.	Top choice for intense fall color. Large upright shrub or medium, round-headed tree. Susceptible to Verticillium Wilt so do not plant near known infected areas. Rare in nursery trade but worth the search.
	Early Glow™ Buckeye ▲ <i>Aesculus glabra</i> 'J.N. Select' (N)	30'-40'	20'-30'	Medium	Spring/Fall	Bright red fall color. Produces very few buckeye seeds.	Horticulture selection of native Illinois tree. Prefers moist, but well-drained, loamy soil. Is more resistant than species to scorch, but not immune to the problem during prolonged hot, dry periods.	Has superior resistance to leaf blotch, leaf scorch, and powdery mildew. Only moderately tolerant of poor drainage and drought.
	Carolina Silverbell <i>Halesia carolina</i> (N)	30'-40'	20'-35'	Medium	Spring	White, bell-shaped spring flowers.	Sun to part shade. Prefers moist, well-drained acid soil. Intolerant to drought. Protect from afternoon sun. Can become chlorotic in high pH soils.	Handsome, native flowering tree that thrives in shady areas.
	Frontier Elm <i>Ulmus</i> 'Frontier'	25'-40'	20'-30'	Fast	Spring/Fall	Lustrous foliage emerges reddish in spring, turning green in summer, and a lovely purple-red in fall. High tolerance to Dutch elm disease and elm yellows, moderate resistance to elm leaf beetle. Seedless.	Transplants easily and grows well in a wide range of climates. Very tolerant of urban conditions, drought, poor soil and compaction.	Handsome medium-sized, vase-shaped tree that better suits the space constraints of most residential yards. Fall color is a bonus.
	Katsura Tree <i>Cercidiphyllum japonicum</i>	40'-50'	20'-50'	Medium	Spring	Reddish-purple, heart-shaped foliage changes to bluish green in summer and yellow to apricot in fall.	Somewhat difficult to transplant and needs supplemental watering during dry, hot periods or leaf drop may occur. Prefers rich, well-drained soil. Protect from afternoon sun.	Magnificent tree for a variety of locations. Unusual spicy cinnamon odor during leaf drop.
	Paperbark Maple <i>Acer griseum</i>	25'-35'	15'-30'	Slow	Spring	Cinnamon brown exfoliating bark. Russet-red fall color.	Full sun to part shade. Prefers well-drained soil, but tolerates alkaline or acid soil.	Outstanding season-long aesthetic qualities. Unique flaky, multicolored bark adds interest to winter landscape. Extra care and pruning needed for optimum development.
EVERGREENS	Purple Catalpa ▲ <i>Catalpa x erubescens</i> 'Purpurea'	40'-50'	40'-50'	Fast	Spring/Fall	Showy spring blossoms are long-lasting. Newly emerging leaves are rich chocolatey-purple that transition to dark green.	Best in full sun. Can withstand long dry periods and a variety of soils; is intolerant of poor drainage.	The wood is prone to wind damage but extremely resistant to rot. Long, bean-pod seeds are few.
	Concolor Fir <i>Abies concolor</i>	30'-50'	15'-30'	Slow-Medium	Spring/Fall	Beautiful blue foliage that resembles Blue Spruce but prettier and less prickly.	Withstands heat and cold and more urban tolerant than most firs. Prefers moist, well-drained soil. Dislikes heavy clay. Will tolerate light shade. Susceptible to windblown road salt.	Excellent Fir for the Midwest. Attractive growth habit and beautiful foliage. Also try Douglas Fir.
	Limber Pine <i>Pinus flexilis</i>	30'-50'	15'-30'	Slow	Spring/Fall	Deeply fissured scale like bark. Dark bluish-green foliage. Cones.	Transplants well. Tolerant to wind. Sun to part shade. Prefers moist, well-drained soil. Susceptible to windblown road salt.	Very adaptable, hardy species for Midwestern winters.
LARGE TREES	Serbian Spruce <i>Picea omorika</i>	50'-60'	20'-25'	Slow-Medium	Spring/Fall	Superb dark green foliage and narrow pyramidal growth.	Prefers moist, rich, well-drained soil and semi-shade but adapts to full sun. Drought tolerant, pH adaptable and can tolerate city air. Does not tolerate poorly drained clay soils. Susceptible to windblown road salt.	A graceful, refined tree that tops other Spruces in looks. An excellent specimen tree. Also try Oriental Spruce.
	American Basswood <i>Tilia americana</i> (N)	60'-80'	30'-50'	Medium	Spring/Fall	Fragrant flowers (that produce abundant nectar from which choice honey is made) are an attractive June feature. Seeds attract songbirds and blue jays.	Prefers moist, well-drained soils but tolerates dry, alkaline soils and is pH adaptable. Likes full sun to partial shade. May be sensitive to air pollutants. Susceptible to ice storm damage.	Large leaves produce a deep shade. May outgrow small yards. Can be attractive to Japanese beetles. Cultivars American Sentry®, Continental Appeal™, Boulevard and Legend® have distinct appeal.
	Bald Cypress <i>Taxodium distichum</i> (N)	60'-80'	20'-45'	Medium	Spring	Fluted broad-spreading orange tinged trunk. Feathery, needle-like foliage that is yellow-green in spring and russet-red in fall. Round cones.	Requires sunny location and acid soil. Tolerates wet or dry sites but does not tolerate high pH. Wind resistant. Susceptible to windblown road salt.	Graceful deciduous conifer that makes a distinctive specimen. A similar option is Dawn Redwood. Also try the Earl Cully Illinois cultivar 'Shawnee Brave' that is more narrow in habit.
	Bur Oak <i>Quercus macrocarpa</i> (N)	70'-90'	60'-90'	Slow-Medium	Spring	Impressive size and habit when grown in open space. Lustrous green foliage in summer. Fringed capped acorns.	Can be difficult to transplant if root ball is not sufficiently sized. Very adaptable to a range of soils, including clay. Requires full sun.	Massive long-lived tree that needs space. Attracts wildlife. Many champion-sized Bur Oaks reside in Illinois. Try cultivars Heritage®, a Bur/English hybrid or Cobblestone®, an extra-corky bark form.
	Chinkapin Oak <i>Quercus muehlenbergii</i> (N)	40'-55'	40'-65'	Medium-Fast	Spring	Bold scaly gray bark on old historic tree specimens. Lustrous foliage. Yellow/orange/brown fall color. Sweet acorns are favorable to wildlife.	Can be difficult to transplant if root ball is not sufficiently sized. Tolerates alkaline soils. Requires full sun. Drought resistant.	Distinctive, Midwestern tree that requires large area. Also known as Yellow Chestnut Oak.
	Exclamation!® London Plane Tree ▲ <i>Platanus x acerifolia</i> 'Morton Circle'	50'-60'	30'-45'	Medium	Spring/Fall	Handsome bark is predominant in winter. Habit is more uniform and upright than species. Resistant to anthracnose and frost cracking.	Prefers full sun and moist, rich, well-drained soil. Is pH adaptable and moderately salt and drought tolerant.	Uniform shape makes it a good candidate for formal plantings. Withstands urban pollutants and is very adaptable.
	Ginkgo (Male) <i>Ginkgo biloba</i>	50'-80'	40'-80'	Slow	Spring/Fall	Unusual fall leaf drop is a pleasurable experience (Ginkgo trees can have synchronized leaf drop in a matter of hours as a response to a night's first hard freeze and/or day length). Unique fan-shaped foliage. Yellow fall color.	Easy to transplant. Durable tree that grows in almost any soil. Requires full sun. Growth rate can be dramatically increased with adequate watering.	An impressive tree in appearance and historical interest that improves with age. Exceptional fall color. Try cultivar Emperor™, a fruitless Chicagoland Grows® introduction.
	Japanese Zelkova <i>Zelkova serrata</i>	50'-80'	40'-50'	Medium-Fast	Spring	Interesting patchy colored bark develops with age. Yellow/orange/brown to sometimes more intense reddish/purple fall color.	Transplants readily. Prefers well-drained soil. Once established, very wind and drought tolerant.	Unusual vase-shaped tree that is well suited to lawns and residential areas. Young trees are susceptible to frost.
	Kentucky Coffee Tree (Male) <i>Gymnocladus dioicus</i> (N)	55'-75'	45'-65'	Medium	Spring/Fall	Pink/purple tinged leaves of spring changing to dark green in summer. Yellow fall color.	Requires full sun. Adaptable to a wide range of growing conditions. Tolerant of urban areas.	Grass grows well underneath. Perfect tree for passive solar homes. Plant male cultivars to avoid fruit. Try 'Espresso', Prairie Titan™ or 'Stately Manor'.
	Sugar Hackberry <i>Celtis laevigata</i> (N)	50'-80'	50'-80'	Medium-Fast	Spring/Fall	Small fleshy fruit attracts birds and wildlife. Unique light gray bark can be smooth or covered with corky, wart-like bumps.	Prefers rich, moist soils but also grows in dry, heavy, sandy, rocky soils. Wind resistant and tolerant of urban conditions. Requires full sun. Marginally cold hardy in northern Illinois.	Sturdy native tree for Midwestern prairie states. Performs well under adverse conditions. Common Hackberry is a better choice for northern Illinois.
	Swamp White Oak <i>Quercus bicolor</i> (N)	60'-80'	50'-80'	Medium	Spring	Ornate patchy bark with deep red, gray and brown hues. Two-toned foliage is dark green on top and silvery underneath. Yellow/copper fall color.	Transplants more readily than White Oaks. Tolerates drought and salt in urban environments. Requires full sun and acid soil.	Majestic, durable, long-lived tree that is a very imposing specimen when full grown. For an option 'Regal Prince' is an appealing Swamp White/English Oak hybrid.
	Triumph™ Elm <i>Ulmus</i> 'Morton Glossy'	50'-60'	40'-50'	Medium-Fast	Spring	Strong, upright branching with refined oval habit. Large lustrous dark green foliage turns yellow in fall. Disease and insect resistant, tolerant to drought.	Easily transplanted, balled and burlapped. Quick to establish and regain rapid growth. Adaptable to most soil types unless excessively wet.	Excellent shade tree for home landscapes or for along streets. Consider cultivars Commendation™ and 'New Horizon' for a variety of fall color.

(N) = a species or a selection of an Illinois native tree

▲ = New Selection

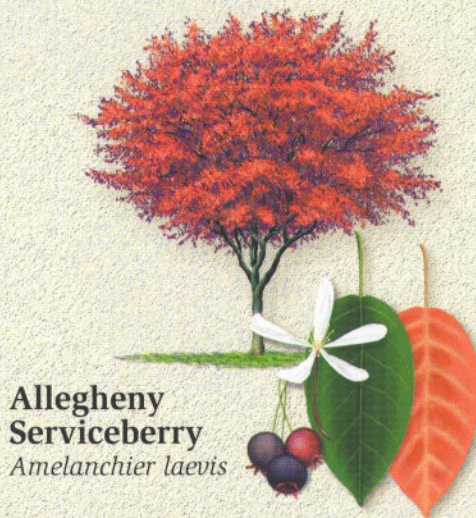
* Growth Rates: **Slow** = under 12" per year; **Medium** = 12" to 24" per year; **Fast** = 25" or more per year

Select Trees for Illinois



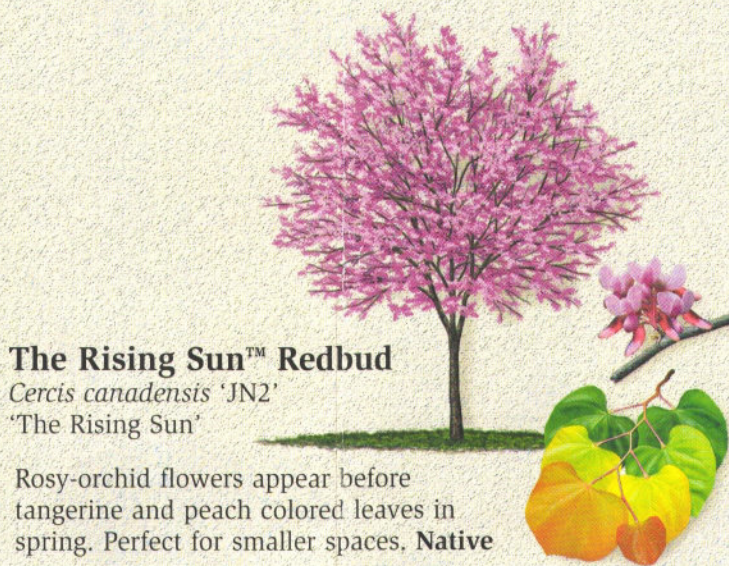
**Exclamation!®
London Plane
Tree**
Platanus x acerifolia
"Morton Circle"

Beautiful, stately tree. Exfoliating bark in marbled colors of white, cream, gray and green adds winter interest.



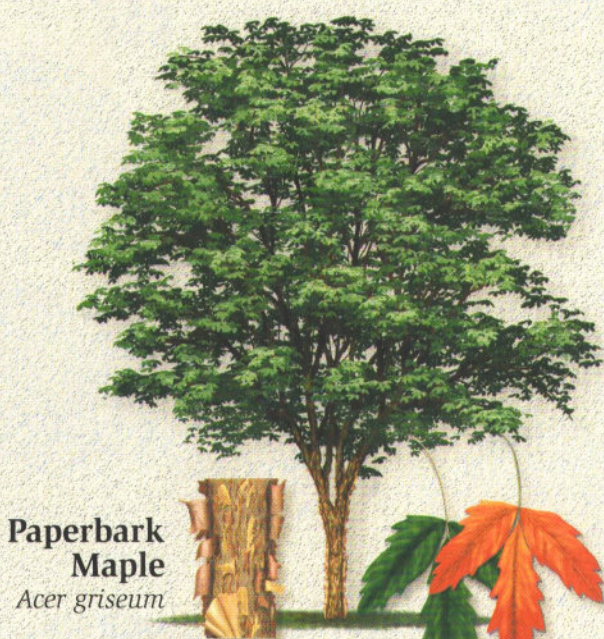
**Allegheny
Serviceberry**
Amelanchier laevis

Attractive features in all seasons. Suitable for planting where space is limited. **Native**




The Rising Sun™ Redbud
Cercis canadensis 'JN2'
"The Rising Sun"

Rosy-orchid flowers appear before tangerine and peach colored leaves in spring. Perfect for smaller spaces. **Native**




**Paperbark
Maple**
Acer griseum

Graceful tree with exfoliating paper-like bark in rich reddish-brown tones.



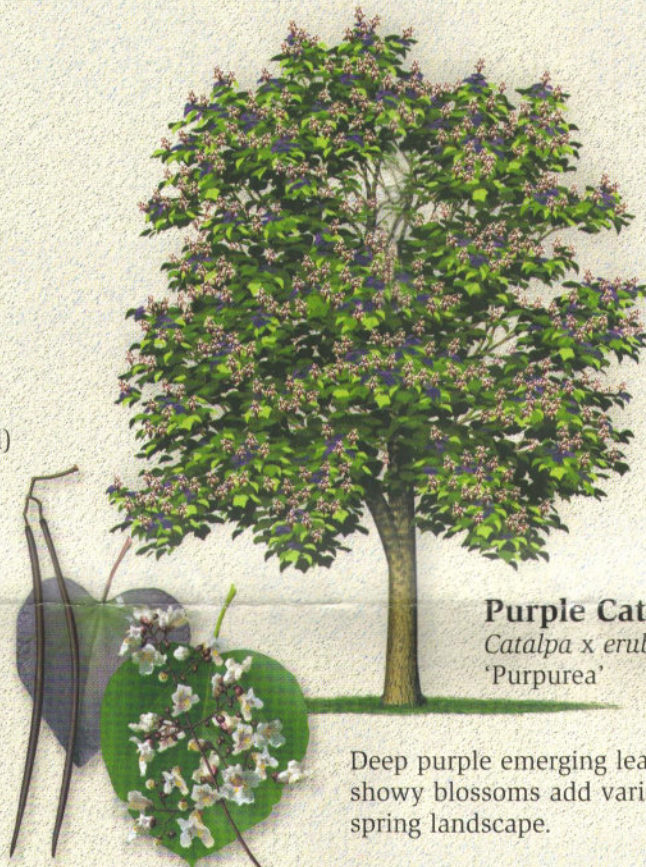
**Cornelian Cherry
Dogwood**
Cornus mas

Excellent small tree. Shows off its flowers best when planted in front of dark backgrounds.



**American
Hophornbeam** (Ironwood)
Ostrya virginiana

Handsome medium-sized tree that naturally occurs as an understory species on dry slopes. **Native**



Purple Catalpa
Catalpa x erubescens
"Purpurea"

Deep purple emerging leaves and showy blossoms add variety to the spring landscape.



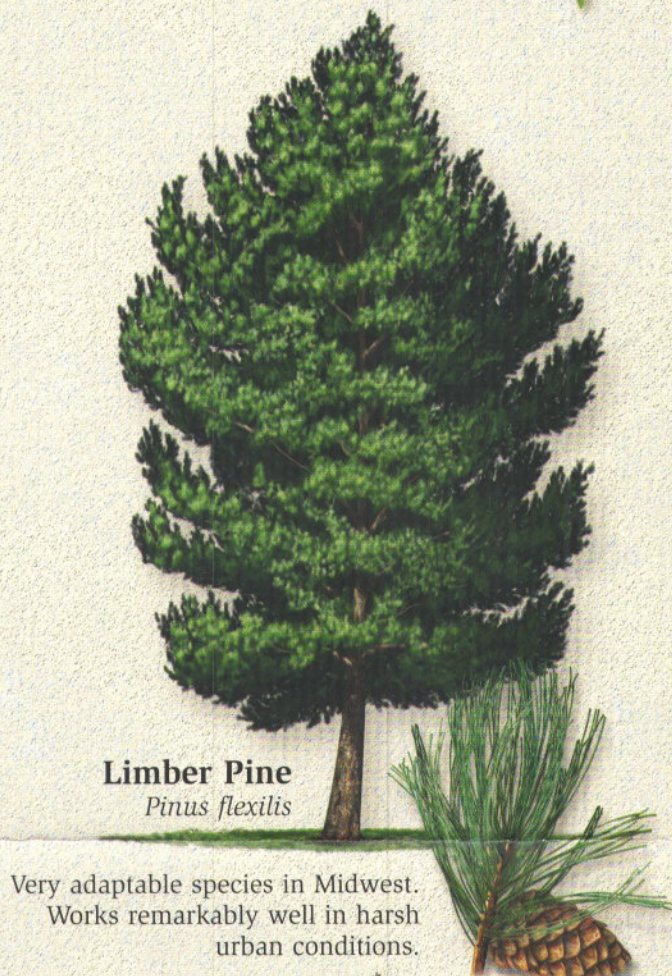
Katsura Tree
Cercidiphyllum japonicum

Magnificent tree for a variety of locations from parks to residential lots. Relatively free of disease and insects.



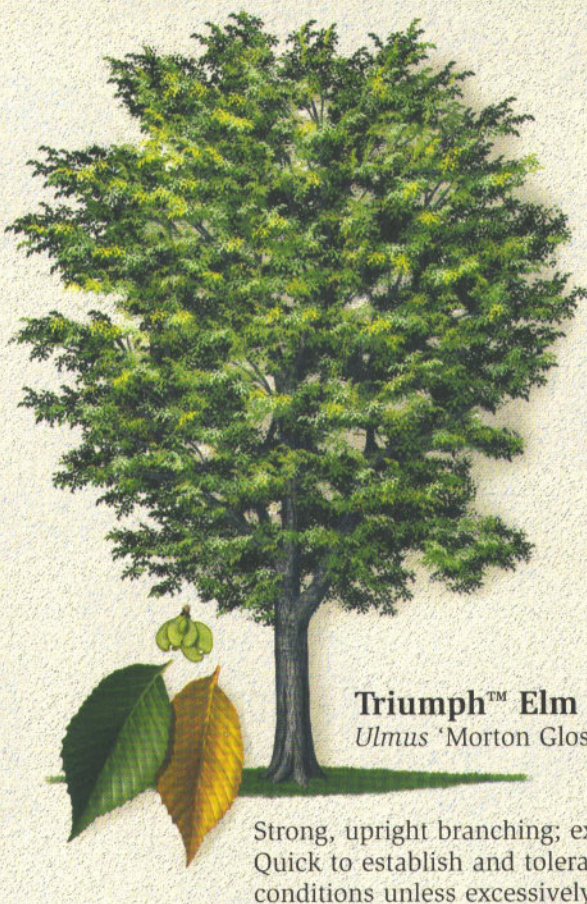
White Fringe Tree
Chionanthus virginicus

Beautiful small tree or specimen shrub. Tolerant of urban conditions.



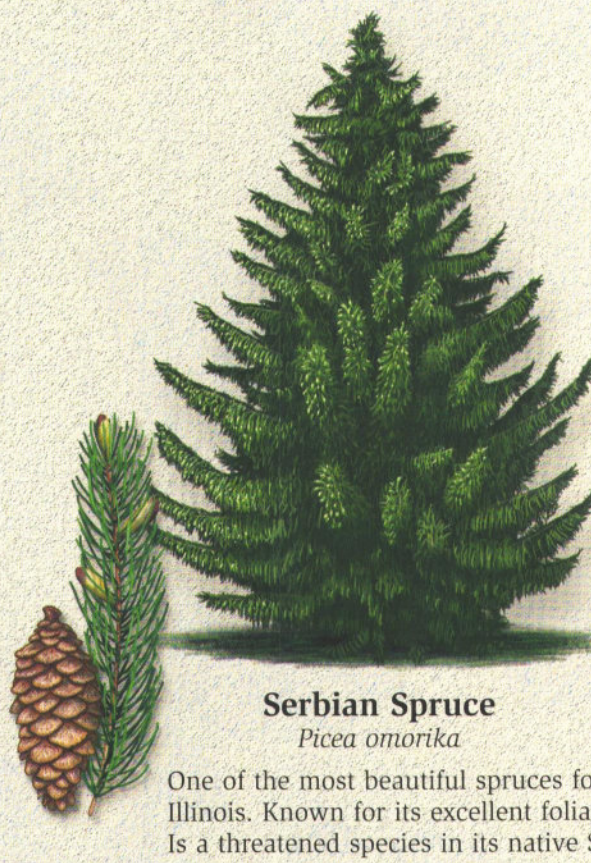
Limber Pine
Pinus flexilis

Very adaptable species in Midwest. Works remarkably well in harsh urban conditions.




Triumph™ Elm
Ulmus "Morton Glossy"

Strong, upright branching, excellent shade. Quick to establish and tolerates most soil conditions unless excessively wet.



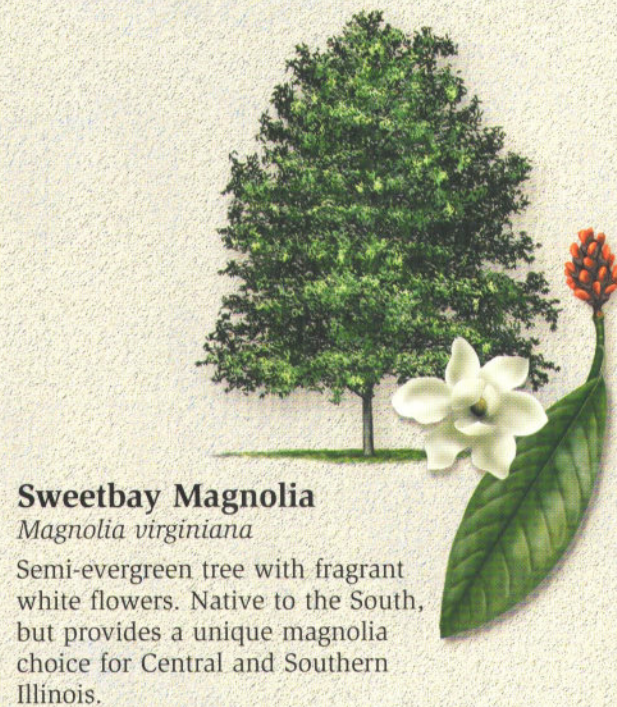
Serbian Spruce
Picea omortka

One of the most beautiful spruces for Illinois. Known for its excellent foliage. Is a threatened species in its native Serbia.



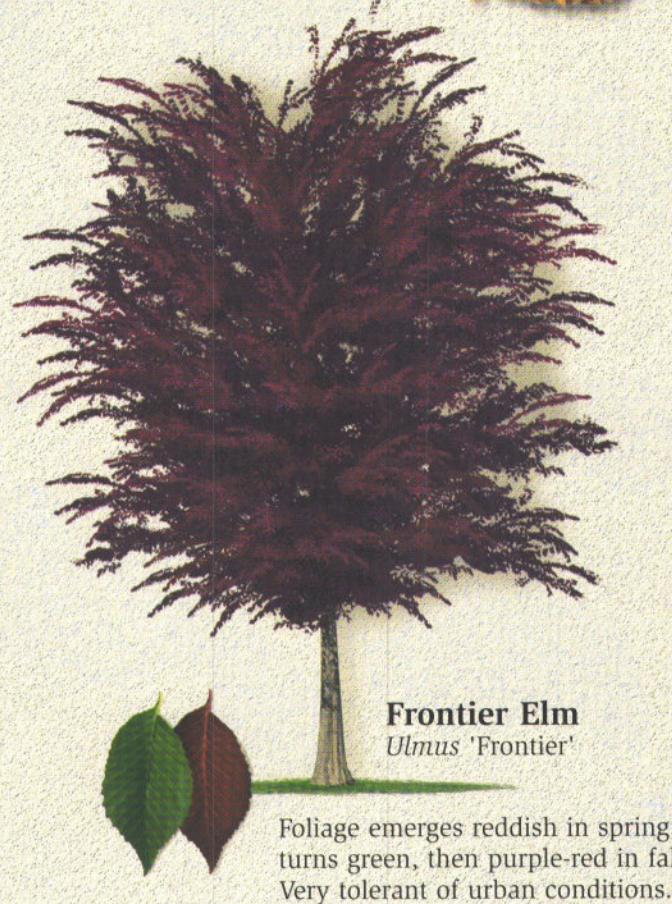
Early Glow™ Buckeye
Aesculus glabra "J.N. Select"

Improved buckeye selection that drops less fruit than species. Reliable, brilliant red fall color. **Native**



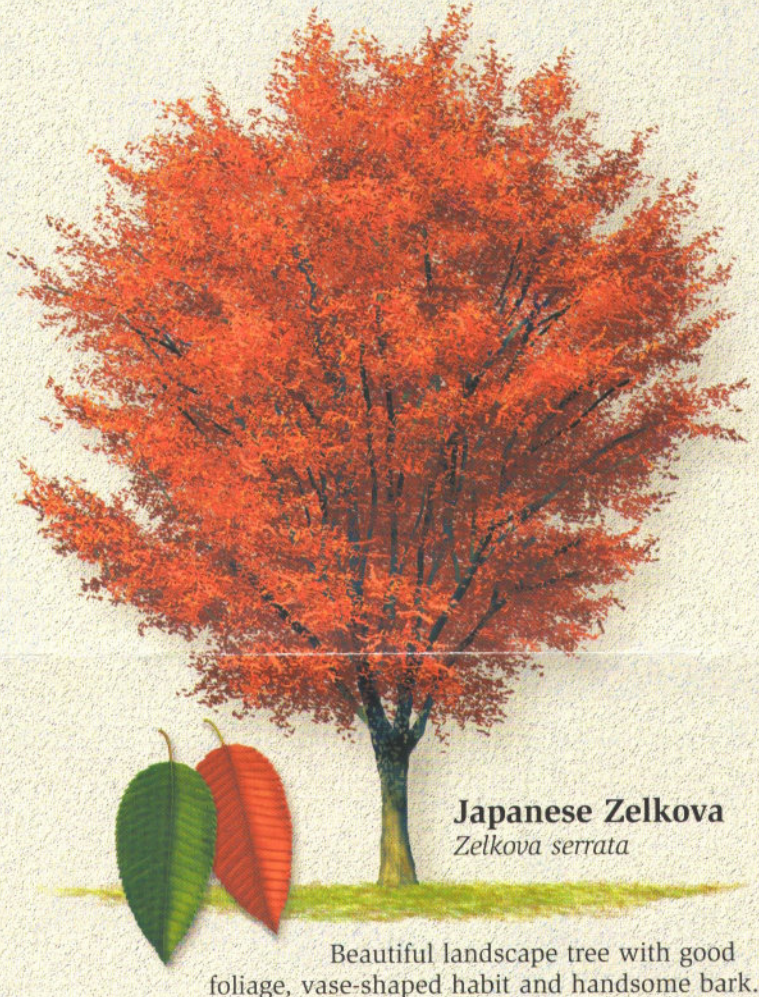
Sweetbay Magnolia
Magnolia virginiana

Semi-evergreen tree with fragrant white flowers. Native to the South, but provides a unique magnolia choice for Central and Southern Illinois.



Frontier Elm
Ulmus "Frontier"

Foliage emerges reddish in spring, turns green, then purple-red in fall. Very tolerant of urban conditions.



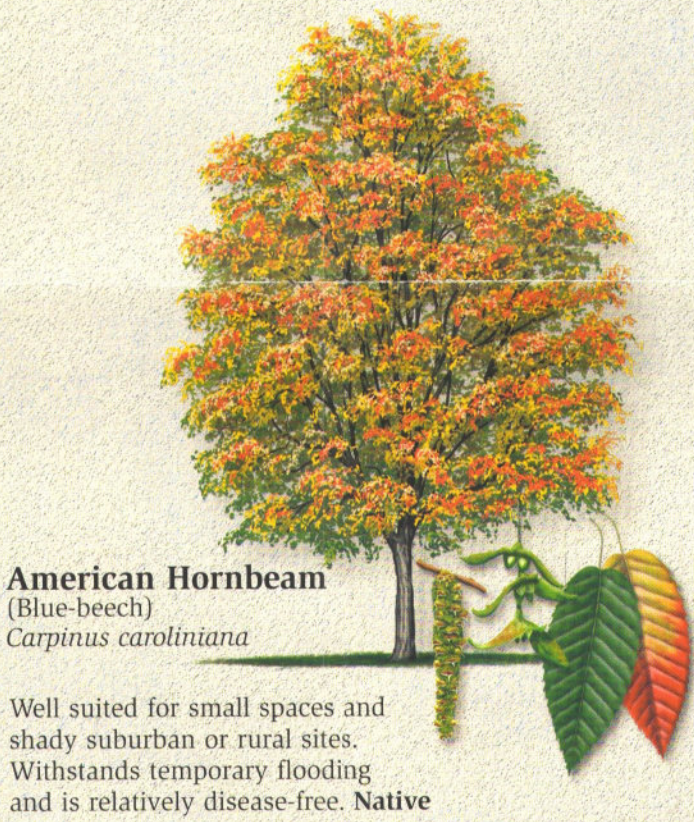
Japanese Zelkova
Zelkova serrata

Beautiful landscape tree with good foliage, vase-shaped habit and handsome bark.



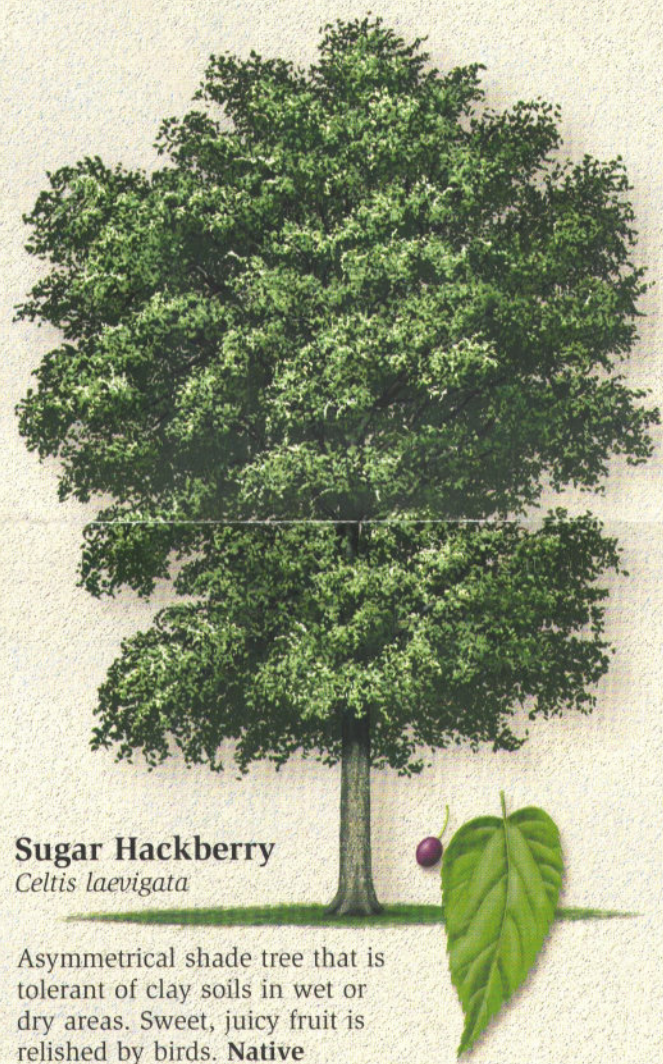
Concolor Fir
Abies concolor

Ideal fir for the Midwest. A fragrant tree that is a preferred substitute for the Colorado Blue Spruce.



American Hornbeam
(Blue-beech)
Carpinus caroliniana

Well suited for small spaces and shady suburban or rural sites. Withstands temporary flooding and is relatively disease-free. **Native**



Sugar Hackberry
Celtis laevigata

Asymmetrical shade tree that is tolerant of clay soils in wet or dry areas. Sweet, juicy fruit is relished by birds. **Native**



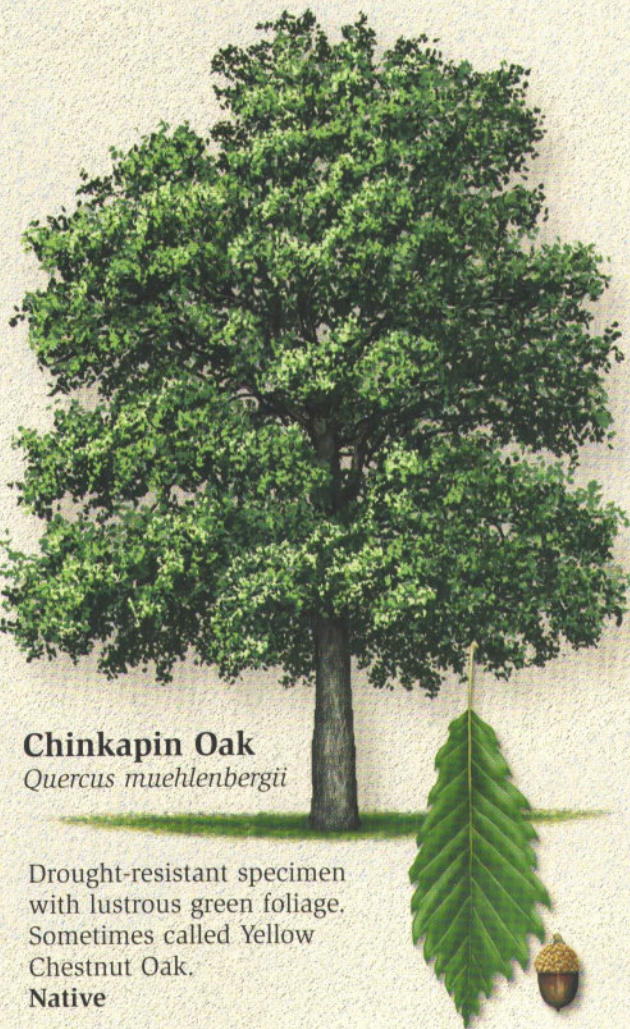
Swamp White Oak
Quercus bicolor

Handsome bark adds winter interest. Tolerates drought, salt and soil compaction. Transplants more readily than other white oaks. **Native**



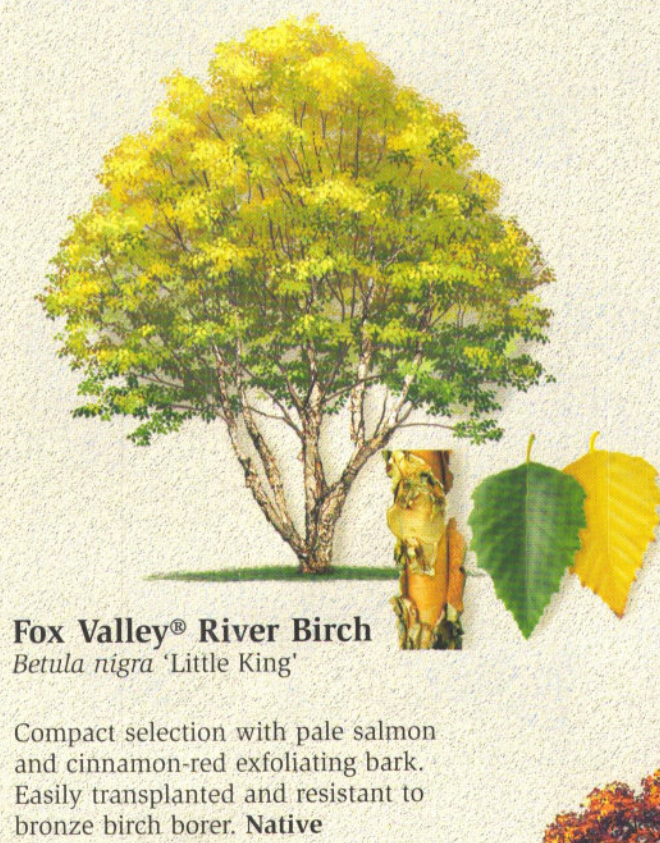
Kentucky Coffee Tree
(Male/Fruitless)
Gymnocladus dioica

Large tree that provides lightly filtered shade, enabling grass to grow under its canopy. **Native**



Chinkapin Oak
Quercus muhlenbergii

Drought-resistant specimen with lustrous green foliage. Sometimes called Yellow Chestnut Oak. **Native**



Fox Valley® River Birch
Betula nigra "Little King"

Compact selection with pale salmon and cinnamon-red exfoliating bark. Easily transplanted and resistant to bronze birch borer. **Native**



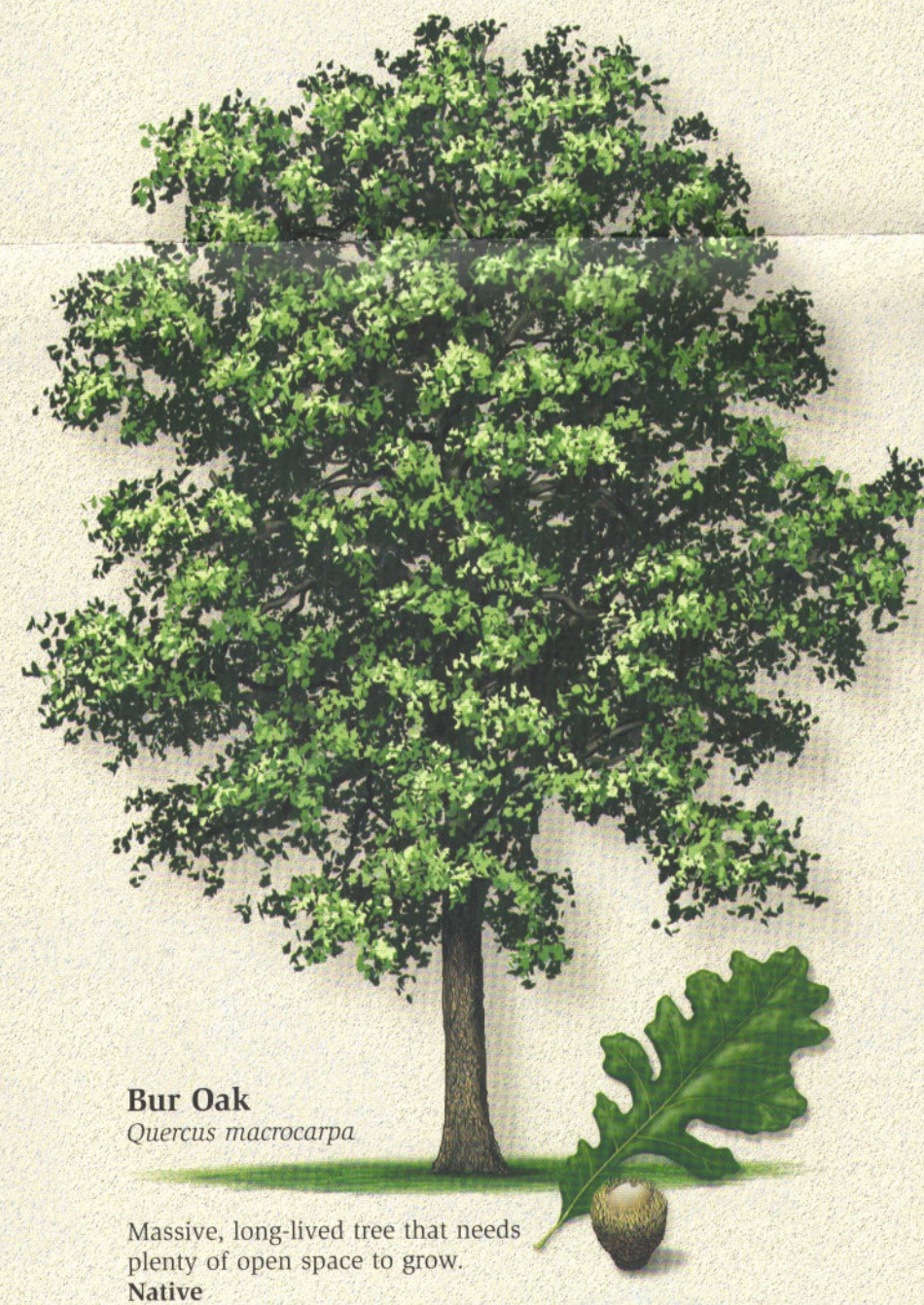
Blackhaw Viburnum
Viburnum prunifolium

Interesting small specimen tree or multi-stemmed shrub. Profuse white flowers in May. **Native**



Ginkgo
(Male/Fruitless)
Ginkgo biloba

One of the oldest surviving trees dating back 150 million years. Simultaneous shedding of leaves is a striking phenomenon in the fall.



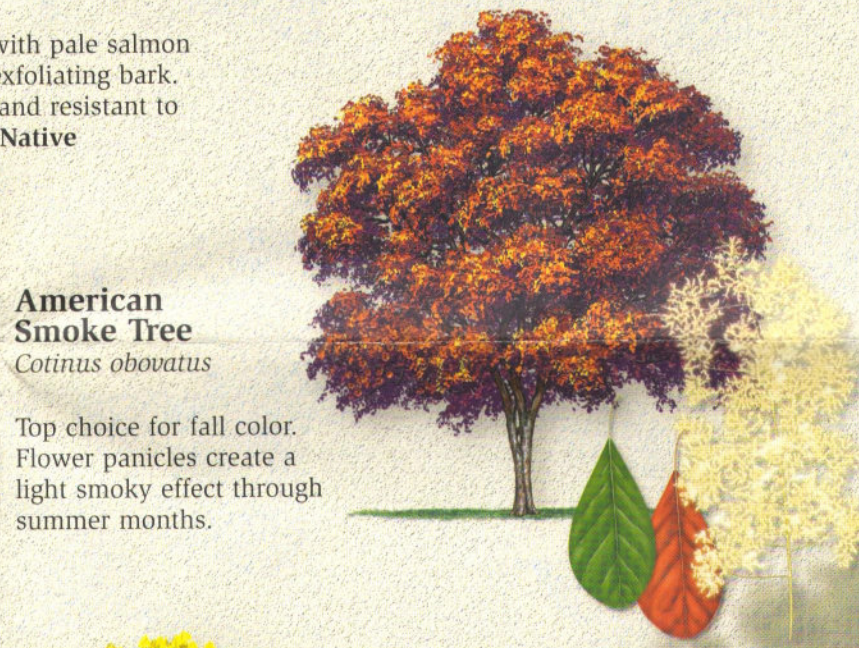
Bur Oak
Quercus macrocarpa

Massive, long-lived tree that needs plenty of open space to grow. **Native**



American Basswood
Tilia americana

A shade tree best suited for large yards. Fragrant flowers with abundant nectar in June. Seeds popular with songbirds. **Native**



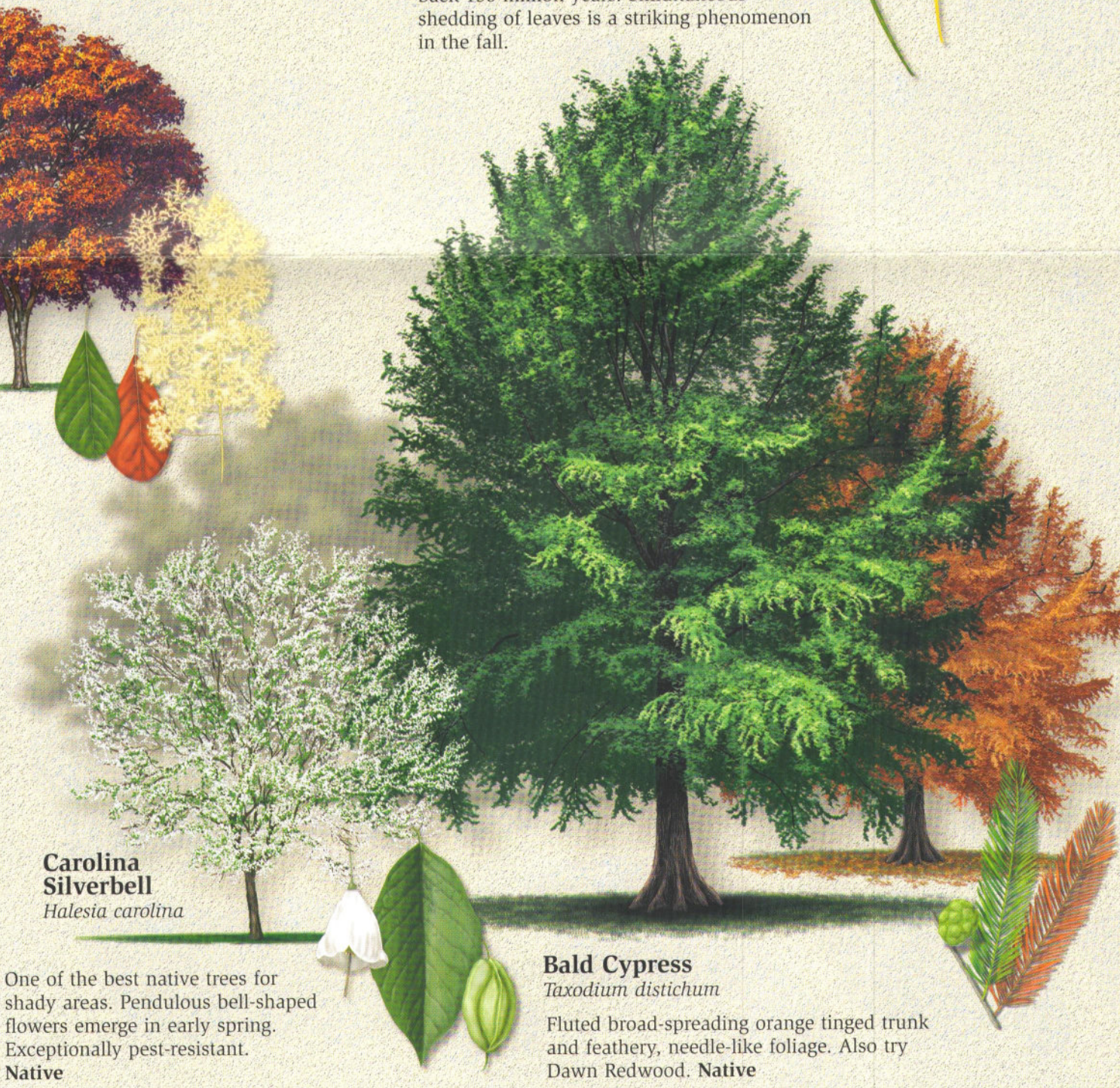
American Smoke Tree
Cotinus obovatus

Top choice for fall color. Flower panicles create a light smoky effect through summer months.




Pawpaw
Asimina triloba

Small tree that produces tropical-flavored edible fruit with as much potassium as bananas. Also called Prairie Banana. **Native**



Carolina Silverbell
Halesia carolina

One of the best native trees for shady areas. Pendulous bell-shaped flowers emerge in early spring. Exceptionally pest-resistant. **Native**



Bald Cypress
Taxodium distichum

Fluted broad-spreading orange tinged trunk and feathery, needle-like foliage. Also try Dawn Redwood. **Native**

