

### DUCTWORK LEGEND

SINGLE LINE	DOUBLE LINE	
		FIRST DIMENSION DENOTES VIEW SHOWN; RECT. OR OVAL
		TRANSITION, 18" MIN. LENGTH, 15' MAX. EACH SIDE. ROUND OR RECT.
		RECT. TO ROUND TRANSITION
		90° ELL W/TURNING VANES
		45° HEEL TAKE-OFF FITTING, RECT.
		CONICAL OR FLARED SPIN-IN OR CONICAL TAP
		18 INCH ROUND DUCT
		SUPPLY DUCT TURNING TOWARD
		SUPPLY DUCT TURNING AWAY
		RETURN DUCT TURNING TOWARD
		RETURN DUCT TURNING AWAY
		EXHAUST DUCT TURNING TOWARD
		EXHAUST DUCT TURNING AWAY
		ROUND DUCT TURNING TOWARD
		ROUND DUCT TURNING AWAY
		ROUND FLEXIBLE DUCT
		BALANCE DAMPER OR VOLUME DAMPER
		MOTORIZED DAMPER
		WALL SUPPLY REGISTER /GRILLE
		WALL EXHAUST GRILLE
		FD FIRE DAMPER
		LOUVER
		FLEXIBLE DUCT CONNECTION
		ACCESS AROUND EQUIPMENT
		24X12 SHEET METAL RETURN AIR OPENING IN WALL ABOVE CEILING LEVEL
		TEMPERATURE TRANSMITTER
		THERMOSTAT
		TEMPERATURE SENSOR
		SMOKE DUCT DETECTOR
		POINT OF CONNECTION TO EXISTING
		POINT OF DISCONNECTION
		EQUIPMENT TO BE REMOVED

### ABBREVIATIONS

A	AMPS	*F	DEGREES FAHRENHEIT	(N)	NEW	TON	TONNAGE
ABBR	ABBREVIATION	FD	FIRE DAMPER	N/A	NOT APPLICABLE	TP	TOTAL PRESSURE
ACC	AIR COOLED CONDENSING UNIT	FLA	FULL LOAD AMPS	NC	NORMALLY CLOSED	TSP	TOTAL STATIC PRESSURE
ACH	AIR CHANGES PER HOUR	FS	FLOW SWITCH	NG	NATURAL GAS	TT	TEMPERATURE TRANSMITTER
ACU	AIR CONDITIONING UNIT	FT	FEET	NO	NORMALLY OPEN	TYP	TYPICAL
AFF	ABOVE FINISHED FLOOR	FT.WG	FEET WATER GAUGE	NOM	NOMINAL		
AHU	AIR HANDLING UNIT			NTS	NOT TO SCALE		
ATC	AUTOMATIC TEMPERATURE CONTROL					V	VOLTS
		GA	U.S. GAUGE	OA	OUTSIDE AIR		
		GAL	GALLON	OAT	OUTSIDE AIR TEMPERATURE	W	WATTS
		GFCI	GROUND FAULT CIRCUIT INTERRUPTER	OBD	OPPOSED BLADE DAMPER	W	WIDE
						W/	WITH
BD	BALANCING DAMPER					WB	WET BULB
BDD	BACKDRAFT DAMPER	HOA	HAND-OFF-AUTO	PD	PRESSURE DROP	WC	WATER COLUMN
BHP	BRAKE HORSE POWER	H	HIGH	PH	PHASE	WMS	WIRE MESH SCREEN
BOD	BOTTOM OF DUCT	HP	HORSE POWER	POC	POINT OF CONNECTION		
BTUH	BRITISH THERMAL UNITS PER HOUR	HTG	HEATING	POD	POINT OF DISCONNECTION		
		HVAC	HEATING, VENTILATING & AIR CONDITIONING	PRV	PRESSURE REGULATOR VALVE		
CD	CONDENSATE DRAIN	HZ	HERTZ	PSI	POUNDS PER SQUARE INCH		
CFH	CUBIC FEET PER HOUR			PSIG	POUNDS PER SQUARE INCH GAUGE		
CFM	CUBIC FEET PER MINUTE						
CLG	COOLING	IN.WC	INCHES WATER COLUMN	(R)	REMOVE		
CO	CLEAN OUT	IN.WG	INCHES WATER GAUGE	RG	RETURN GRILLE		
CU. FT.	CUBIC FEET			RL	REFRIGERANT LIQUID		
				RLA	RUNNING LOAD AMPS		
DB	DRY BULB			RPM	REVOLUTIONS PER MINUTE		
DIA	DIAMETER	KW	KILO WATTS	RS	REFRIGERANT SUCTION		
DIV	DIVISION						
DN	DOWN			SA	SUPPLY AIR		
DX	DIRECT EXPANSION			SEER	SEASON ENERGY EFFICIENT RATIO		
		LAT	LEAVING AIR TEMPERATURE	SF	SUPPLY FAN		
(E)	EXISTING	LBS	POUNDS	SP	STATIC PRESSURE		
EA	EXHAUST AIR	M	MOTOR	SQ. FT	SQUARE FEET		
EAT	ENTERING AIR TEMPERATURE	MAX	MAXIMUM	SR	SUPPLY REGISTER		
EER	ENERGY EFFICIENCY RATIO	MBH	1000 BTUH	SS	STAINLESS STEEL		
EF	EXHAUST FAN	MCA	MINIMUM CIRCUIT AMPACITY				
ESP	EXTERNAL STATIC PRESSURE	MFR	MANUFACTURER				
EUH	ELECTRIC UNIT HEATER	MIN	MINIMUM				
		MOP	MAXIMUM OVERCURRENT PROTECTION				

### PIPING LEGEND

	PIPE TURNING DOWN
	PIPE TURNING UP

### HVAC GENERAL NOTES

- HVAC EQUIPMENT DIMENSIONS, LOCATIONS, DUCTWORK AND PIPING SYSTEM LAYOUTS ARE BASED ON EQUIPMENT SELECTED BY THE ENGINEER. IF THE CONTRACTOR PROPOSES TO FURNISH EQUIPMENT THAT REQUIRES AN ARRANGEMENT OR SPACE DIFFERING FROM THAT INDICATED ON THE DRAWINGS OR SPECIFIED, THE CONTRACTOR SHALL PREPARE AND SUBMIT TO THE ENGINEER FOR APPROVAL, DETAILED ARCHITECTURAL, STRUCTURAL, MECHANICAL, PLUMBING, INSTRUMENTATION, HVAC AND ELECTRICAL DRAWINGS AND EQUIPMENT LISTS SHOWING ALL NECESSARY CHANGES AND EMBODYING ALL FEATURES OF THE EQUIPMENT HE/SHE PROPOSES TO FURNISH. THIS INFORMATION SHALL INCLUDE BUT NOT BE LIMITED TO PLANS, SECTIONS, DETAILS, AND SCHEMATICS OF ALL SUCH CHANGES IF APPROVED BY THE ENGINEER. APPURTENANCES REQUIRED SHALL BE AT NO EXTRA COST TO THE OWNER. THE CONTRACTOR SHALL ASSUME THE COST AND RESPONSIBILITY FOR SATISFACTORILY ACCOMPLISHING ALL THE NECESSARY CHANGES CORRESPONDING TO THE DIMENSIONS AND CHARACTERISTICS OF THE EQUIPMENT SUBMITTED AND APPROVED BY THE ENGINEER, INCLUDING COORDINATION AND COSTS TO OTHER BUILDING SYSTEMS AND SERVICES CREATED BY THE PROPOSED CHANGES. REFER TO SPECIFICATIONS FOR FURTHER DETAILS.
- SIZES OF EQUIPMENT PADS INDICATED ON THE DRAWINGS ARE APPROXIMATE. EXACT DIMENSIONS SHALL BE DETERMINED BY THE CONTRACTOR FOR THE EQUIPMENT FURNISHED. ALL FLOOR MOUNTED EQUIPMENT SHALL BE SET ON CONCRETE PADS CONFORMING TO DETAILS SHOWN ON THE STRUCTURAL DRAWINGS. ALL EQUIPMENT PADS SHALL BE 6 TO 12 INCHES LARGER THAN EQUIPMENT FOOTPRINT ON ALL SIDES.
- DIELECTRIC COUPLINGS, FLANGES OR UNIONS SHALL BE INSTALLED AT ALL CONNECTIONS OF COPPER PIPE TO OTHER TYPES OF METALLIC PIPING.
- UNLESS OTHERWISE SHOWN ON THE DRAWING ALL FLOOR SLAB AND WALL PENETRATIONS SHALL BE AS SHOWN ON THE PENETRATION DETAILS. ABOVE GROUND EXTERIOR WALL AND ROOF PENETRATIONS SHALL BE AS SHOWN ON THE ARCHITECTURAL DRAWINGS. IF APPROVED BY THE ENGINEER, THE CONTRACTOR MAY SUBSTITUTE ALTERNATE METHODS PROVIDING THEY MEET INTENDED DESIGN REQUIREMENTS.
- NOT ALL AND ONLY CERTAIN TYPES OF SUPPORTS ARE SHOWN ON THE HVAC DRAWINGS. UNLESS OTHERWISE DETAILED ON THE DRAWINGS, ALL PIPE AND DUCT SUPPORTS SHALL BE DESIGNED, FURNISHED AND INSTALLED BY THE CONTRACTOR AS SPECIFIED AND TO THE APPROVAL OF THE ENGINEER.

NOTE: THIS IS A GENERAL LIST OF SYMBOLS AND ABBREVIATIONS. NOT ALL ITEMS SHOWN HERE APPEAR ON THE CONTRACT DRAWINGS

XREF: [CDMS\_2456] Images: [ ]  
 Last saved by: DEBNARMA Time: 8/19/2017 9:59:01 AM  
 pw:\lpw.cdmsmith.com\FW\_PL1\9326\217069\04\_Design\_Services\_NM\_60%\06 HVAC\10\_CADD\H001GNLG.dwg

REV. NO.	DATE	DRWN	CHKD	REMARKS

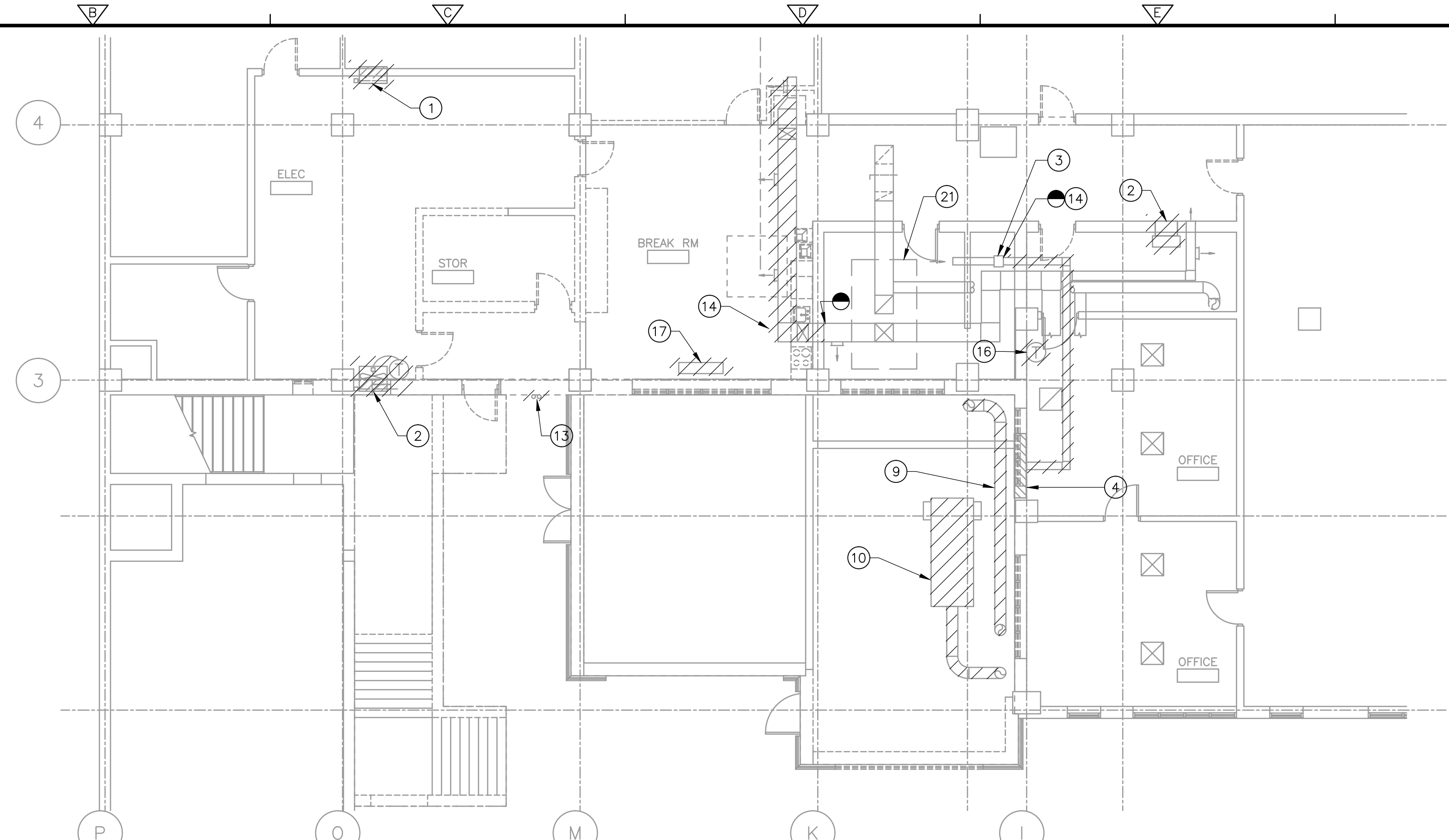
DESIGNED BY: M. DEBNAR  
 DRAWN BY: G. LUISI  
 SHEET CHK'D BY: M. DEBNAR  
 CROSS CHK'D BY: S. TASCARELLA  
 APPROVED BY: X  
 DATE: AUG 2017

**CDM Smith**  
 125 S Wacker Dr  
 Chicago, IL 60606  
 Tel: (617) 452-6000

VILLAGE OF WILMETTE  
**WATER PLANT ELECTRICAL IMPROVEMENTS PROJECT**

**HVAC LEGENDS, ABBREVIATIONS, AND GENERAL NOTES**

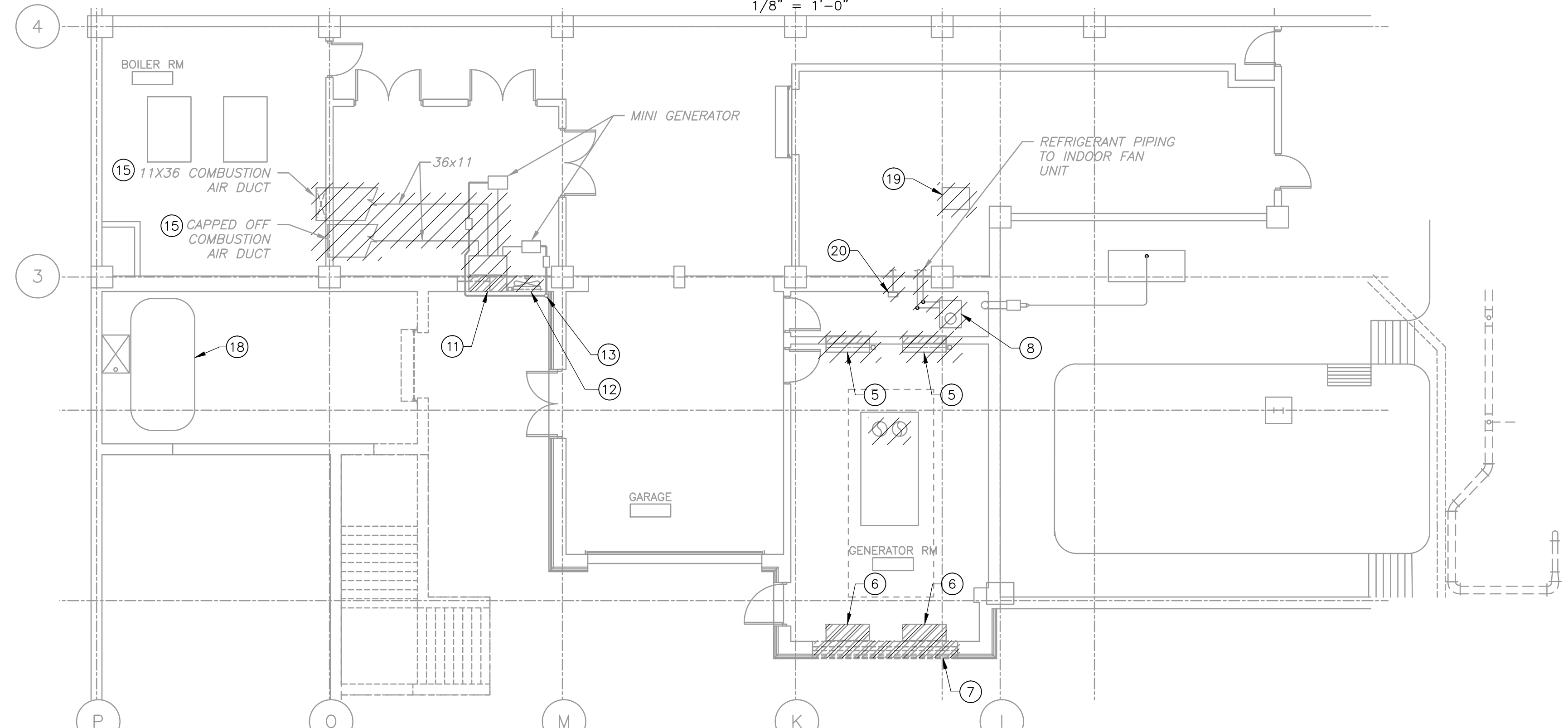
PROJECT NO. 9326-217069  
 FILE NAME: H001GNLG.DWG  
 SHEET NO. **H-1**



SECOND FLOOR DEMOLITION

PLAN

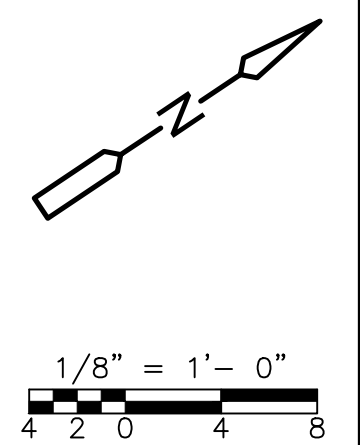
1/8" = 1'-0"



GROUND FLOOR DEMOLITION

PLAN

1/8" = 1'-0"



**GENERAL NOTES:**

1. FIELD VERIFY EXACT LOCATION AND CHARACTERISTICS OF EXISTING HVAC EQUIPMENT.
2. SOME ITEMS SHALL NOT BE REMOVED UNTIL THE NEW DIESEL GENERATORS ARE INSTALLED AND PROPERLY OPERATING. REFER TO SECTION 01 12 16 CONSTRUCTION SEQUENCE.

**KEY NOTES:**

- ① TRANSFER GRILLE, FIRE DAMPER, AND FILTER TO BE REMOVED. PATCH WALL TO MATCH EXISTING.
- ② EXHAUST FANS AND RELATED DUCTWORK, CONTROLS, POWER CIRCUITS, ETC. TO BE REMOVED, PATCH WALL TO MATCH EXISTING.
- ③ EXHAUST FAN SERVING EXISTING MEN'S RESTROOM TO REMAIN. EXHAUST FAN DISCHARGE DUCT TO BE REROUTED TO ROOF.
- ④ EXISTING LOUVER TO BE REMOVED. PATCH WALL TO MATCH EXISTING.
- ⑤ EXISTING LOUVER, DUCTWORK, CONTROLS, POWER CIRCUITS, ETC. TO BE REMOVED. PATCH WALL TO MATCH EXISTING.
- ⑥ EXHAUST FANS AND RELATED DUCTWORK, CONTROLS, POWER CIRCUITS, ETC. TO BE REMOVED.
- ⑦ EXISTING LOUVERS AND ASSOCIATED DUCTWORK, CONTROLS, POWER CIRCUITS ETC. TO BE REMOVED. WALL OPENING TO BE MODIFIED FOR NEW OVERHEAD DOOR. REFER TO ARCHITECTURAL DRAWINGS.
- ⑧ EXISTING CONDENSING UNIT AND ASSOCIATED REFRIGERANT LINES, CONTROLS, POWER CIRCUITS, ETC. TO BE REMOVED.
- ⑨ PROCESS EQUIPMENT VENT TO BE REROUTED THRU NEW CHASE AND TERMINATE AT ROOF.
- ⑩ EXISTING GENERATOR SILENCER AND EXHAUST TO BE REMOVED.
- ⑪ EXISTING COMBUSTION AIR LOUVER TO BE REMOVED. PATCH WALL TO MATCH EXISTING.
- ⑫ EXISTING EXHAUST FAN WITH GRAVITY DAMPER TO BE REMOVED. PATCH WALL TO MATCH EXISTING.
- ⑬ MINI GENERATOR EXHAUST PIPE TO BE REROUTED TO NEW CHASE. PATCH WALL TO MATCH EXISTING.
- ⑭ REMOVE PORTION OF EXISTING DUCTWORK AND PREPARE FOR NEW WORK.
- ⑮ WALL OPENING FROM EXISTING DUCTWORK TO BE REUSED. PREPARE OPENING FOR NEW WORK.
- ⑯ EXISTING THERMOSTAT AND WIRING TO BE REMOVED.
- ⑰ REMOVE EXISTING RADIATOR. REMOVE ASSOCIATED PIPING DOWN TO BELOW FLOOR AND CAP.
- ⑱ FUEL TANK. EXISTING VENT TO BE TEMPORARILY EXTENDED. TANK TO BE REMOVED AFTER NEW GENERATORS ARE OPERATIONAL.
- ⑲ HVAC CEILING UNIT SERVING METER SHOP TO BE REMOVED. VERIFY LOCATION IN FIELD. REMOVE ALL RELATED ACCESSORIES SUCH AS POWER WIRING AND CONTROLS. CAP HOT WATER PIPING AT MAIN BRANCH LINE.
- ⑳ OUTSIDE AIR INTAKE HOOD AND ASSOCIATED DUCT TO BE REMOVED. PATCH WALL TO MATCH EXISTING.
- ㉑ EXISTING ROOFTOP AIR HANDLING UNIT TO BE REMOVED.

XREFS: [CDMS\_2436, AEPO01AM, HEPO02AM, ADF002AM, ADF001AM, ADF002AM] Images: []  
 Last saved by: DEBNARMA Time: 8/31/2017 9:29:14 AM  
 pw:\lpw.cdm-smith.com\FW\_PL\9326\217069\04 Design Services NM\_60%\_06 HVAC\10 CADD\H002EBPL.dwg

REV. NO.	DATE	DRWN	CHKD	REMARKS

DESIGNED BY: M. DEBNAR  
 DRAWN BY: G. LUISI  
 SHEET CHK'D BY: M. DEBNAR  
 CROSS CHK'D BY: S. TASCARELLA  
 APPROVED BY: X  
 DATE: AUG 2017

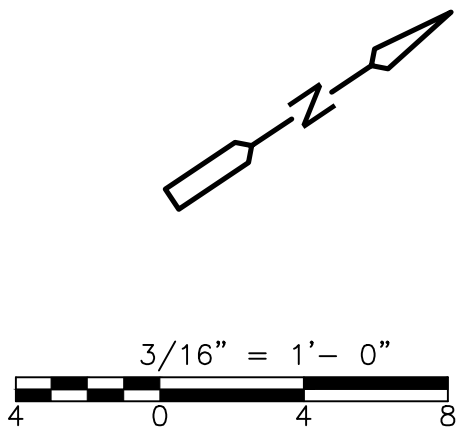
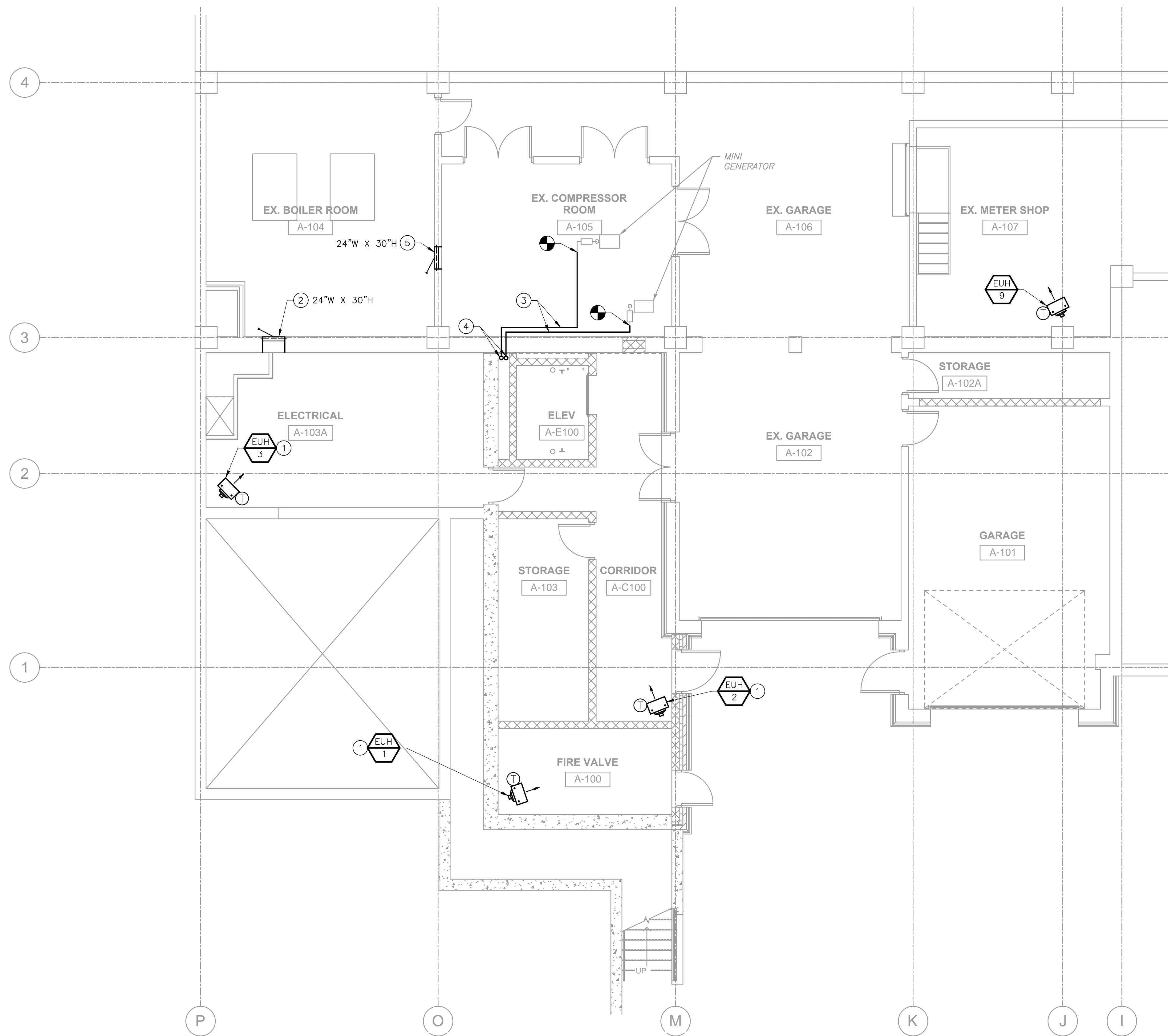


VILLAGE OF WILMETTE  
**WATER PLANT ELECTRICAL IMPROVEMENTS PROJECT**

**HVAC DEMOLITION PLANS**  
 SHEET NO. **H-2**

PROJECT NO. 9326-217069  
 FILE NAME: H002EBPL.DWG  
 SHEET NO. H-2

XREF: [CDMS\_2436, ANP001AM, ANP002AM, ANP001AM, HWP001AM, HWP002AM] Images: []  
 Last saved by: DEBNARMA Time: 8/9/2017 9:30:19 AM  
 pw:\lpw.cdm-smith.com\FW\_PL\9326\217069\04\_Design Services NM\_60%\06 HVAC\10 CADD\H003EBPL.dwg



**GENERAL NOTES:**

1. COORDINATE ROUTING OF DUCTWORK WITH STRUCTURAL AND ELECTRICAL CONSTRAINTS.
2. COORDINATE LOCATION OF HVAC EQUIPMENT WITH FIRE PROTECTION PIPING.

**KEY NOTES:**

- ① ELECTRIC UNIT HEATER MOUNTED ON WALL. BOTTOM OF HEATER APPROXIMATELY 8'-0" AFF.
- ② WALL OPENING WITH FIRE DAMPER FOR BOILER AND WATER HEATER COMBUSTION AIR. OPENING SHALL COMMENCE WITHIN 12" OF THE CEILING.
- ③ MINI GENERATOR EXHAUST PIPING TEMPORARILY ROUTED TO BOILER ROOM CHIMNEY. REUSE EXISTING FLEXIBLE CONNECTION AND MUFFLER. PIPE SIZE SHALL MATCH EXISTING.
- ④ MINI GENERATOR EXHAUST PIPING UP TO ROOF.
- ⑤ NEW FIRE DAMPER IN EXISTING WALL OPENING FROM REMOVED DUCT.

**GROUND FLOOR NEW WORK**  
**PLAN**  
 3/16" = 1'-0"

REV. NO.	DATE	DRWN	CHKD	REMARKS

DESIGNED BY: M. DEBNAR  
 DRAWN BY: G. LUISI  
 SHEET CHK'D BY: M. DEBNAR  
 CROSS CHK'D BY: S. TASCARELLA  
 APPROVED BY: X  
 DATE: AUG 2017

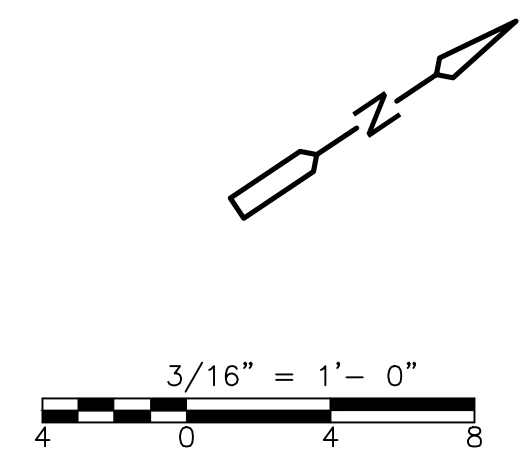
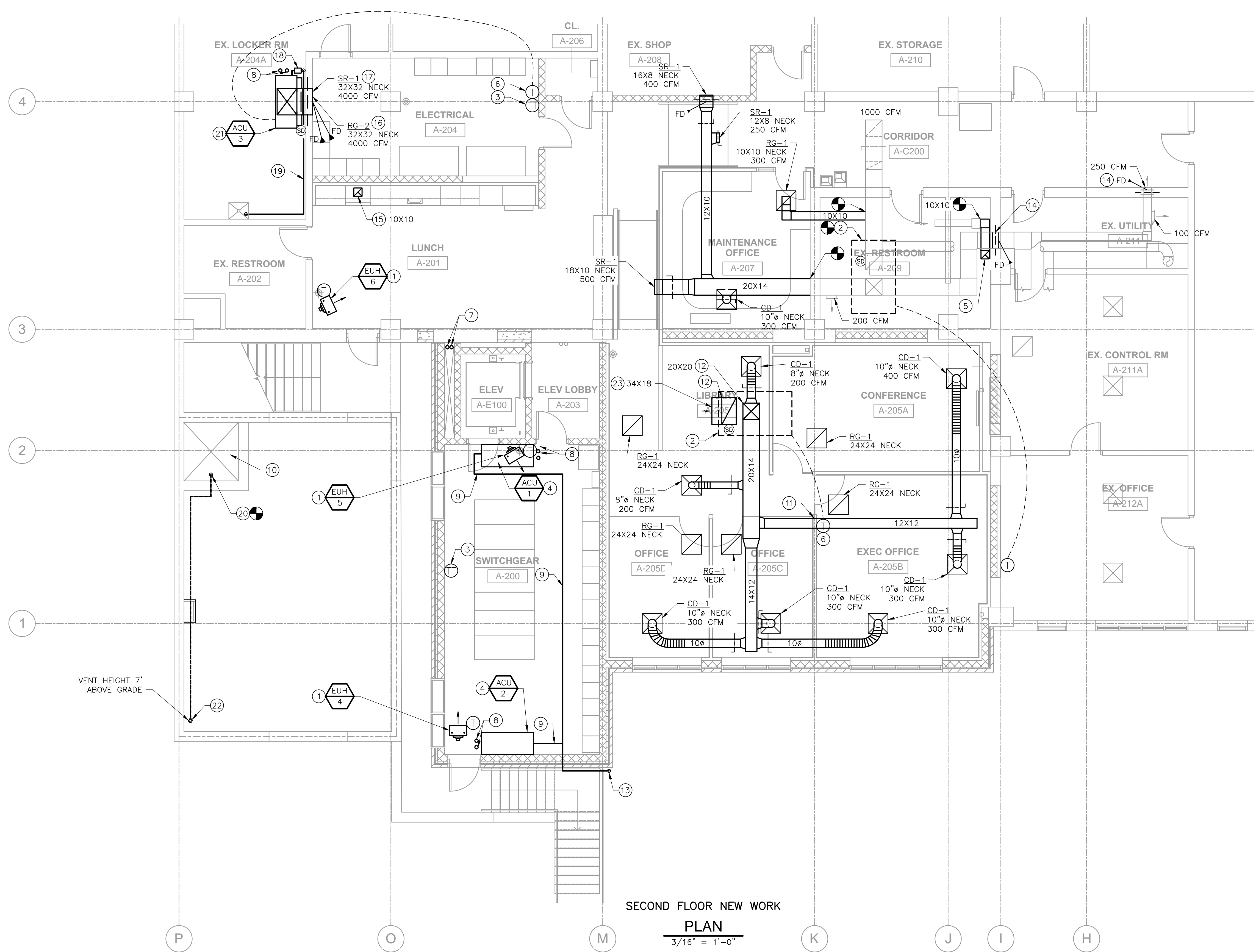
CDM Smith

125 S Wacker Dr  
 Chicago, IL 60606  
 Tel: (617) 452-6000

VILLAGE OF WILMETTE  
**WATER PLANT ELECTRICAL IMPROVEMENTS**  
**PROJECT**

**HVAC**  
**BUILDING ADDITION**  
**GROUND FLOOR PLAN**

PROJECT NO. 9326-217069  
 FILE NAME: H003EBPL.DWG  
 SHEET NO.  
**H-3**



- GENERAL NOTES:**
- COORDINATE ROUTING OF DUCTWORK WITH STRUCTURAL AND ELECTRICAL CONSTRAINTS.
  - HVAC EQUIPMENT AND DUCTWORK SHALL NOT BE LOCATED ABOVE ELECTRICAL EQUIPMENT.
  - LAY-IN CEILING SPACES ARE BEING USED AS RETURN AIR PLENUMS. ITEMS LOCATED IN THE PLENUMS MUST BE PLENUM RATED.

- KEY NOTES:**
- ELECTRIC UNIT HEATER MOUNTED ON WALL. BOTTOM OF HEATER APPROXIMATELY 8'-0" AFF.
  - AIR HANDLING UNIT ON ROOF. CONNECT TO EXISTING DUCT. TRANSITION DUCT SIZE AS NEEDED.
  - TEMPERATURE TRANSMITTER WITH HIGH TEMPERATURE ALARM SETPOINT AT 90°F (ADJ.). SEND ALARM TO SCADA.
  - AIR CONDITIONING UNIT MOUNTED FROM CEILING.
  - MEN'S RESTROOM EXHAUST FAN DISCHARGE DUCT UP TO GOOSENECK ON ROOF.
  - HVAC UNIT CONTROLLER.
  - MINI GENERATOR EXHAUST PIPING UP TO ROOF.
  - REFRIGERANT PIPING UP TO CONDENSING UNIT ON ROOF.
  - PUMPED CONDENSATE DRAIN. SIZE PER MANUFACTURER'S REQUIREMENTS. SLOPE AWAY FROM AIR CONDITIONING UNIT.
  - EXISTING AIR VENT TO BE USED FOR COMBUSTION AIR. CLEAR VENT AND GRILLE OF ANY GREENERY AND DEBRIS.
  - TRANSITION DUCT SIZE IF NECESSARY TO FIT DUCT BETWEEN STRUCTURAL BEAM AND DROP CEILING. DUCT CROSS-SECTIONAL AREA SHALL NOT DECREASE DURING TRANSITION.
  - UP TO AIR HANDLING UNIT. TRANSITION DUCT SIZE TO OPENING SIZE AT AIR HANDLING UNIT.
  - CONDENSATE DOWN TO 1' ABOVE GRADE ONTO SPLASH BLOCK.
  - NEW FIRE DAMPER INSTALLED IN EXISTING DUCTWORK. OPEN DUCTWORK FOR FIRE DAMPER AND REPAIR WITH NEW SHEET METAL.
  - RANGE HOOD EXHAUST DUCT UP TO ROOF.
  - RETURN GRILLE WITH FIRE DAMPER. WALL OPENING APPROXIMATELY 1" AFF.
  - SUPPLY GRILLE WITH FIRE DAMPER. WALL OPENING APPROXIMATELY 5" AFF.
  - CONDENSATE PUMP. LITTLE GIANT VCMX-20, OR EQUAL. PUMP DISCHARGE SLOPED TO EXISTING SERVICE SINK.
  - CONDENSATE TUBING. SIZED PER CONDENSATE PUMP MANUFACTURER'S REQUIREMENTS.
  - FUEL OIL TANK VENT TO BE TEMPORARILY EXTENDED. EXTENSION SIZE AND PIPE MATERIAL TO MATCH EXISTING.
  - AIR CONDITIONING UNIT ON FLOOR.
  - PROVIDE FUEL TANK VENT CAP.
  - RETURN AIR ELBOW WITH MESH SCREEN.

SECOND FLOOR NEW WORK  
 PLAN  
 3/16" = 1'-0"

REV. NO.	DATE	DRWN	CHKD	REMARKS

DESIGNED BY: M. DEBNAR  
 DRAWN BY: G. LUISI  
 SHEET CHK'D BY: M. DEBNAR  
 CROSS CHK'D BY: S. TASCARELLA  
 APPROVED BY: X  
 DATE: AUG 2017

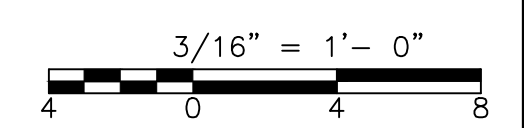
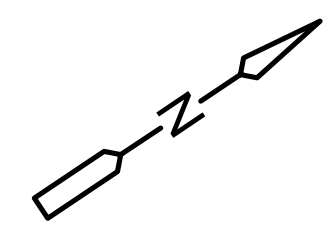


125 S Wacker Dr  
 Chicago, IL 60606  
 Tel: (617) 452-6000

VILLAGE OF WILMETTE  
 WATER PLANT ELECTRICAL IMPROVEMENTS  
 PROJECT

HVAC  
 BUILDING ADDITION  
 SECOND FLOOR PLAN  
 PROJECT NO. 9326-217069  
 FILE NAME: H004EBPL.DWG  
 SHEET NO.  
 H-4

XREFS: [CDMS\_2436, ANPO01AM, ANPO02AM, ANPO03AM, ANPO04AM, ANPO05AM, ANPO06AM, ANPO07AM, ANPO08AM, ANPO09AM, ANPO10AM, ANPO11AM, ANPO12AM, ANPO13AM, ANPO14AM, ANPO15AM, ANPO16AM, ANPO17AM, ANPO18AM, ANPO19AM, ANPO20AM, ANPO21AM, ANPO22AM, ANPO23AM, ANPO24AM, ANPO25AM, ANPO26AM, ANPO27AM, ANPO28AM, ANPO29AM, ANPO30AM, ANPO31AM, ANPO32AM, ANPO33AM, ANPO34AM, ANPO35AM, ANPO36AM, ANPO37AM, ANPO38AM, ANPO39AM, ANPO40AM, ANPO41AM, ANPO42AM, ANPO43AM, ANPO44AM, ANPO45AM, ANPO46AM, ANPO47AM, ANPO48AM, ANPO49AM, ANPO50AM, ANPO51AM, ANPO52AM, ANPO53AM, ANPO54AM, ANPO55AM, ANPO56AM, ANPO57AM, ANPO58AM, ANPO59AM, ANPO60AM, ANPO61AM, ANPO62AM, ANPO63AM, ANPO64AM, ANPO65AM, ANPO66AM, ANPO67AM, ANPO68AM, ANPO69AM, ANPO70AM, ANPO71AM, ANPO72AM, ANPO73AM, ANPO74AM, ANPO75AM, ANPO76AM, ANPO77AM, ANPO78AM, ANPO79AM, ANPO80AM, ANPO81AM, ANPO82AM, ANPO83AM, ANPO84AM, ANPO85AM, ANPO86AM, ANPO87AM, ANPO88AM, ANPO89AM, ANPO90AM, ANPO91AM, ANPO92AM, ANPO93AM, ANPO94AM, ANPO95AM, ANPO96AM, ANPO97AM, ANPO98AM, ANPO99AM, ANPO100AM]  
 Last saved by: DEBNARMA Time: 8/8/2017 8:37:34 AM  
 pw:\\pw.cdm-smith.com\pw\_pl\9326\217069\04 Design Services NM\_60%\_06 HVAC\_10 CAD\H004EBPL.dwg

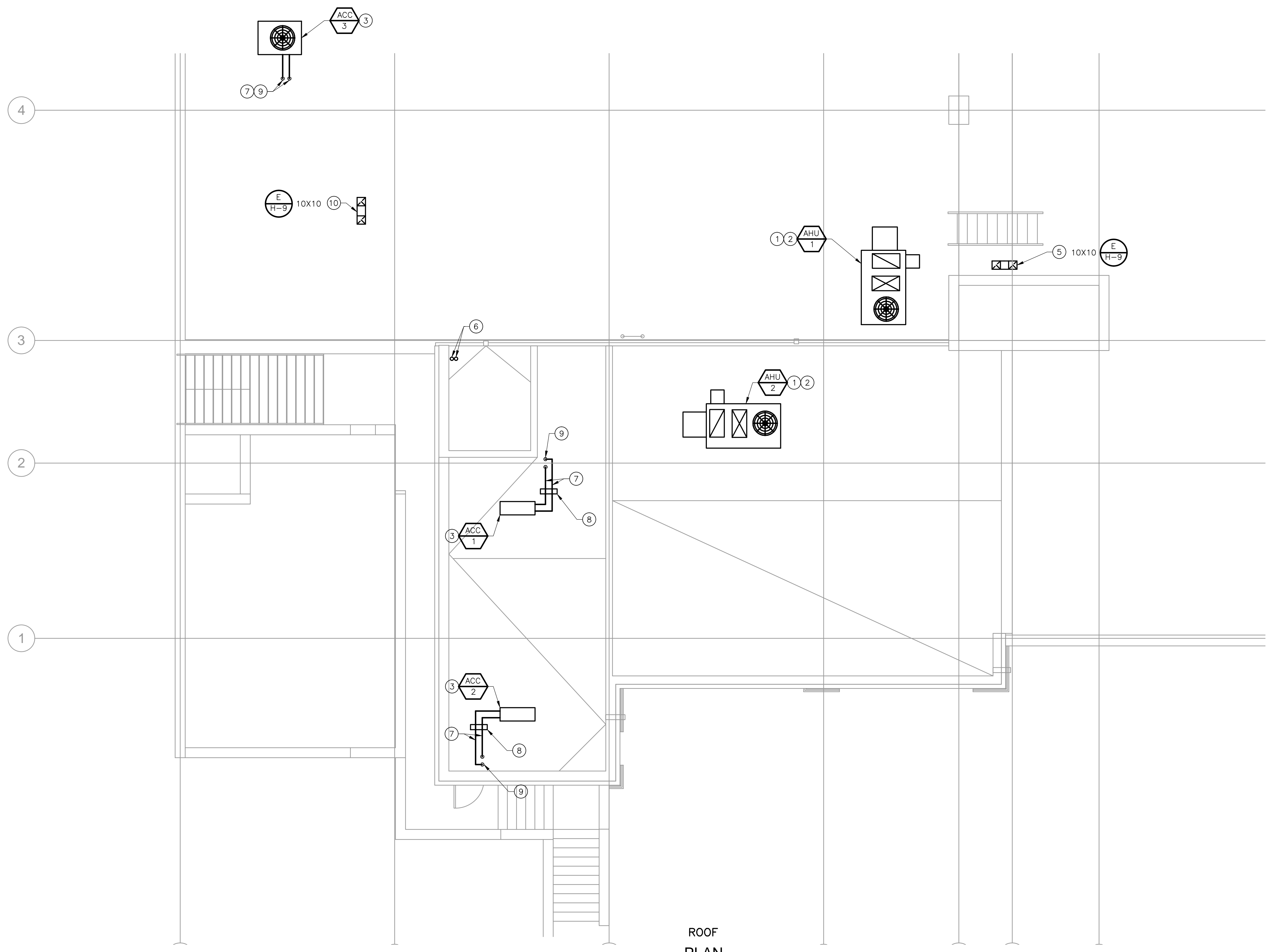


**GENERAL NOTES:**

- 1. EXHAUST AIR OUTLETS SHALL BE AT LEAST 10 FEET FROM OUTSIDE AIR INLETS.
- 2. REFER TO ARCHITECTURAL PLANS FOR ROOF PITCH AND PROVIDE CURBS TO ACCOUNT FOR SLOPE.

**KEY NOTES:**

- ① AIR HANDLING UNIT ON 24" INSULATED CURB.
- ② CONDENSATE DRAIN TO ROOF.
- ③ AIR COOLED CONDENSING UNIT ON EQUIPMENT CURB.
- ④ AIR COOLED CONDENSING UNIT ON 18" STAND PROVIDED BY MANUFACTURER.
- ⑤ MEN'S ROOM EXHAUST FAN GOOSENECK.
- ⑥ MINI GENERATOR EXHAUST.
- ⑦ REFRIGERANT PIPING. SIZE PER EQUIPMENT MANUFACTURER'S REQUIREMENTS.
- ⑧ ROOF PIPING SUPPORT. MAXIMUM 5'-0" APART.
- ⑨ PIPING THROUGH PORTALS IN SMALL CURB WITH CAP.
- ⑩ RANGEHOOD EXHAUST DUCT GOOSENECK.



ROOF PLAN  
3/16" = 1'-0"

XREFS: [CDMS\_2436; HEP003AM; ARP001AM; PWP003AM] Images: []  
Last saved by: DEBNARMA Time: 8/9/2017 2:37:32 PM  
pw:\lpw.cdmsmith.com\PW\_PL\9326\217069\04\_Design\_Services\_NM\_60%\06 HVAC\10\_CADD\H005EBPL.dwg

REV. NO.	DATE	DRWN	CHKD	REMARKS

DESIGNED BY: M. DEBNAR	 125 S Wacker Dr Chicago, IL 60606 Tel: (617) 452-6000
DRAWN BY: G. LUISI	
SHEET CHK'D BY: M. DEBNAR	
CROSS CHK'D BY: S. TASCARELLA	
APPROVED BY: X	
DATE: AUG 2017	

VILLAGE OF WILMETTE  
 WATER PLANT ELECTRICAL IMPROVEMENTS  
 PROJECT

HVAC  
 BUILDING ADDITION  
 ROOF PLAN

PROJECT NO. 9326-217069
FILE NAME: H005EBPL.DWG
SHEET NO. H-5